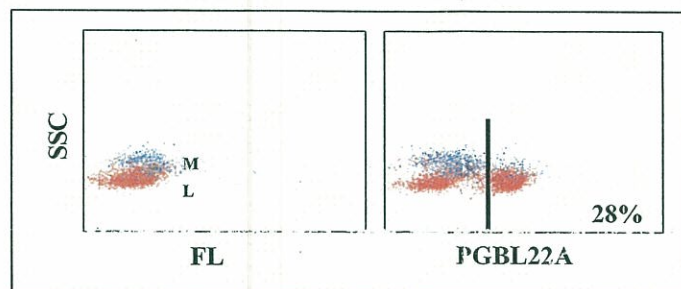


Certificate of Analysis

Catalog No. PG2032/cell line: PGBL22A
Specificity: TCR1 δ chain specific
Isotype: IgG1
Known applications: Flow cytometry, immunohistochemistry, cell function
Known species reactivity: Pig

Description: The monoclonal antibody was produced in ascites fluid, clarified by filtration through a 0.2 micrometer filter. The antibody concentration is 1.0 mg/ml in phosphate buffered saline, preserved in 0.09% sodium azide.

Method used for quality control: Flow cytometry



Flow cytometric profile obtained with pig leukocytes

STORAGE: When the vial is stored at 2-7°C, it should be stable for one year.

REFERENCES:

W. C. Davis, K. Haverson, A. Saalmüller, H. Yang, J. K. Lunney, M. J. Hamilton, and M. D. Pescovitz. Analysis of monoclonal antibodies reacting with molecules expressed on $\gamma\delta$ T-cells. *Vet.Immunol.Immunopathol.* 80 (1-2):53-62, 2001.

For in vitro research use only

Warranty: The WSU Monoclonal Antibody Center warrants this monoclonal antibody is as described and present in the amount stated on the label at the time of delivery to the customer. No other warranties, expressed or implied are made beyond the label description, including warranties of merchantability or fitness for a particular USE. Remedy is limited to replacement of the product. The Center is not liable for property damage, personal injury, or economic loss caused by the product. The information listed in the data sheet is provided for reference only and not a substituted for the user's own respective material quality control.