



Telephone: 509-335-6058
 Fax: 509-335-8328
 e-mail: mabcenterorders@vetmed.wsu.edu
 web: <http://www.vetmed.wsu.edu/depts-MoAb/>



World class. Face to Face.

Certificate of Analysis

Catalog No DG2009/cell line: DH16A
 Specificity: CD45RB

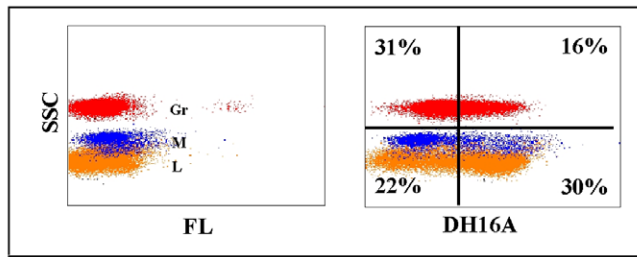
Isotype: IgM

Known applications: Flow cytometry, immunohistochemistry, cell function

Known species reactivity: Bovine, caprine, feline, canine, human

Description: The monoclonal antibody was produced in ascites fluid, clarified by filtration through a 0.2 micrometer filter. The antibody concentration is 1.0 mg/ml in phosphate buffered saline, preserved in 0.09% sodium azide.

Method used for quality control: Flow cytometry



Flow cytometric profile obtained with bovine leukocytes

STORAGE: When the vial is stored at 2-7°C, it should be stable for one year.

REFERENCES:

- S. Ibrahim, K. Saunders, J. H. Kydd, D. P. Lunn, and F. Steinbach. Screening of anti-human leukocyte monoclonal antibodies for reactivity with equine leukocytes. *Vet.Immunol.Immunopathol.* 119:63-80, 2007.
- M. J. B. F. Flaminio, S. Ibrahim, D. P. Lunn, R. Stark, and F. Steinbach. Further analysis of anti-human leukocyte mAbs with reactivity to equine leukocytes by two-color cytometry and immunohistochemistry. *Vet.Immunol.Immunopathol.* 119:92-99, 2007.
- W. C. Davis, K. Drbal, A. E. Mosaad, A. R. Elbagory, A. Tibary, G. M. Barrington, Y. H. Park, and M. J. Hamilton. Use of flow cytometry to identify monoclonal antibodies that recognize conserved epitopes on orthologous leukocytes differentiation antigens in goats, llamas and rabbits. *Vet.Immunol.Immunopathol.* 119:123-128, 2007.

For *in vitro* research use only

Warrant

nount

stated on the label at the time of delivery to the customer. No other warranties, expressed or implied are made beyond the label description, including warranties of merchantability or fitness for a particular USE. Remedy is limited to replacement of the product. The Center is not liable for property damage, personal injury, or economic loss caused by the product. The information listed in the data sheet is provided for reference only and not a substituted for the user's own respective material quality control.