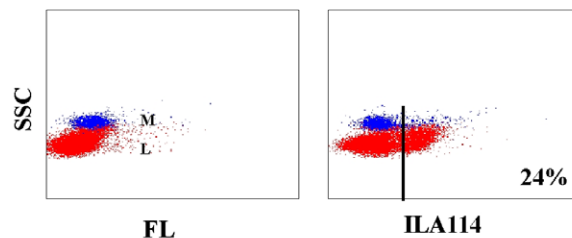


Certificate of Analysis

Catalog No BOV2106/cell line: ILA114A
 Specificity: CD205 (Workshop cluster WC6)
 Isotype: IgG1
 Known applications: Flow cytometry, immunohistochemistry, cell function
 Known species reactivity: Bovine

Description: The monoclonal antibody was produced in ascites fluid, clarified by filtration through a 0.2 micrometer filter. The antibody concentration is 1.0 mg/ml in phosphate buffered saline, preserved in 0.09% sodium azide.

Method used for quality control: Flow cytometry



Flow cytometric profile obtained with bovine leukocytes

STORAGE: When the vial is stored at 2-7°C, it should be stable for one year.

REFERENCES:

- Parsons KR, et al. Studies of monoclonal antibodies identifying two novel bovine lymphocyte antigen differentiation clusters: workshop clusters (WC) 6 and 7. *Vet Immunology and Immunopathology*. 39:187-192, 1993.
 Dutia BM, et al. Analysis of monoclonal antibodies comprising WC6. *Vet Immunology and Immunopathology*. 39:193-99, 1993.
 Gliddon et al. Dec-205 expression on migrating dendritic cells in afferent lymph. *Immunology* 111:262-272, 2004

For *in vitro* research use only

Warranty: The WSU Monoclonal Antibody Center warrants this monoclonal antibody is as described and present in the amount stated on the label at the time of delivery to the customer. No other warranties, expressed or implied are made beyond the label description, including warranties of merchantability or fitness for a particular USE. Remedy is limited to replacement of the product. The Center is not liable for property damage, personal injury, or economic loss caused by the product. The information listed in the data sheet is provided for reference only and not a substituted for the user's own respective material quality control.