

Inc.

1840 Industrial Dr. Suite 270  
Libertyville, Illinois 60048-9467

Tel : (847) 680 8922  
Fax : (847) 680 8927  
<http://www.spherotech.com>

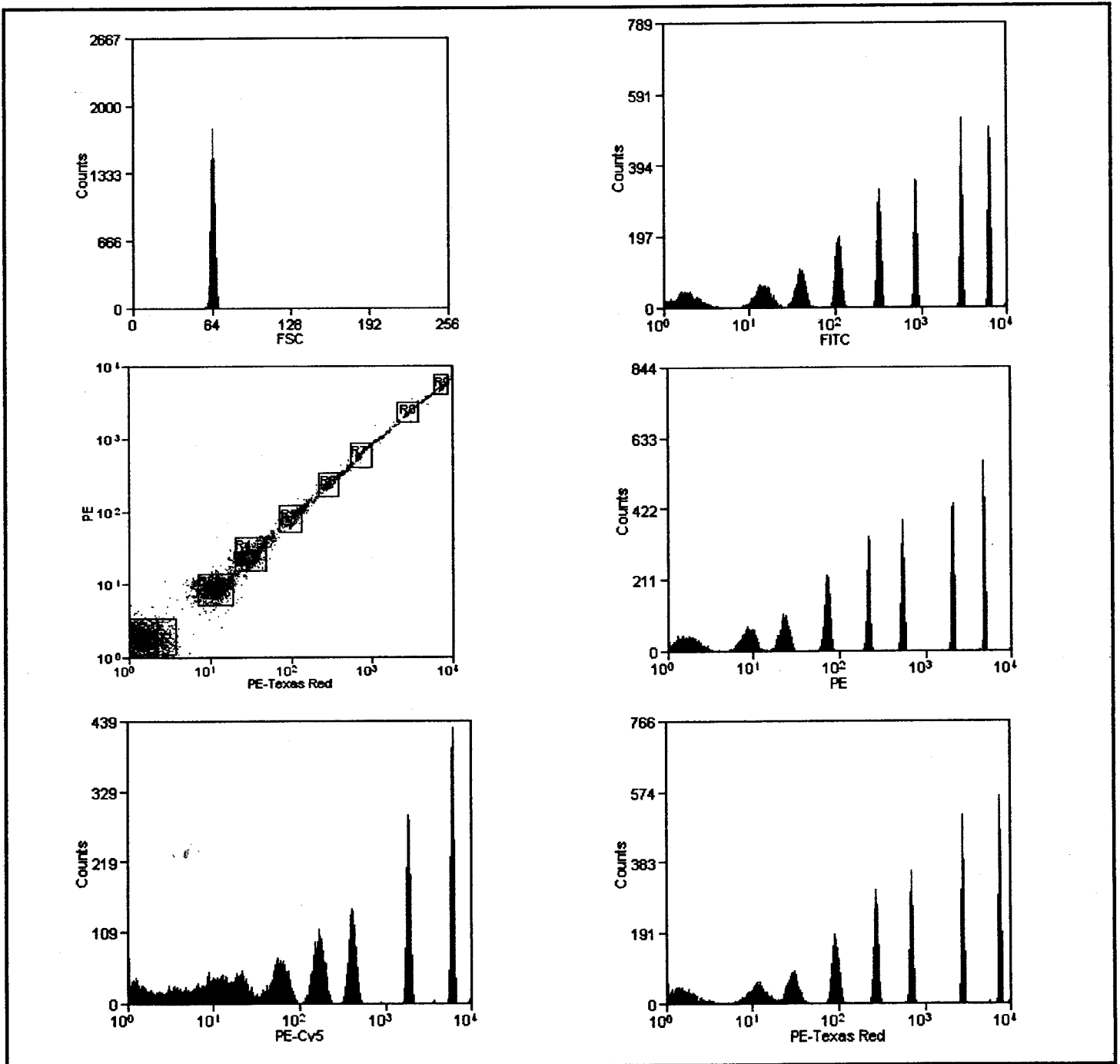
コスモ・バイオ株式会社

## TECHNICAL DATA

- PRODUCT:** SPHERO™ Rainbow Calibration Particles, 8 Peaks, 3.0-3.4  $\mu\text{m}$ .
- CATALOG NO.:** RCP-30-5A
- LOT NO.:** W02
- SIZE:** 5 mL
- CONCENTRATION:**  $\sim 10 \times 10^6$  particles/mL
- STORAGE BUFFER:** Deionized water with 0.02% Sodium Azide and 0.01% NP40
- STORAGE TEMP.:** Stable at room temperature. Store between 2° and 8° C after first use.
- CAUTION:** Do not freeze. Protect from light.
- DESCRIPTION:** This product contains a mixture of 3.0  $\mu\text{m}$  Rainbow Particles in **eight** different fluorescent intensities. Every Rainbow particle contains a mixture of fluorophores that enable the Rainbow particles to be excited at any wavelength from 365 to 650 nm.
- USE:** Routine calibration of flow cytometers. Dilution of 3-5 drops to 1 mL will provide adequate number of particles for flow cytometry.
- NOTE:** Shake vigorously or vortex briefly before use. Inclusion of a small amount of detergent in the diluent will help to increase the number of singles. Diluted Particles can be stored in the refrigerator for future use. *Expires one year after opening.*  
*Please record opening date on bottle.*

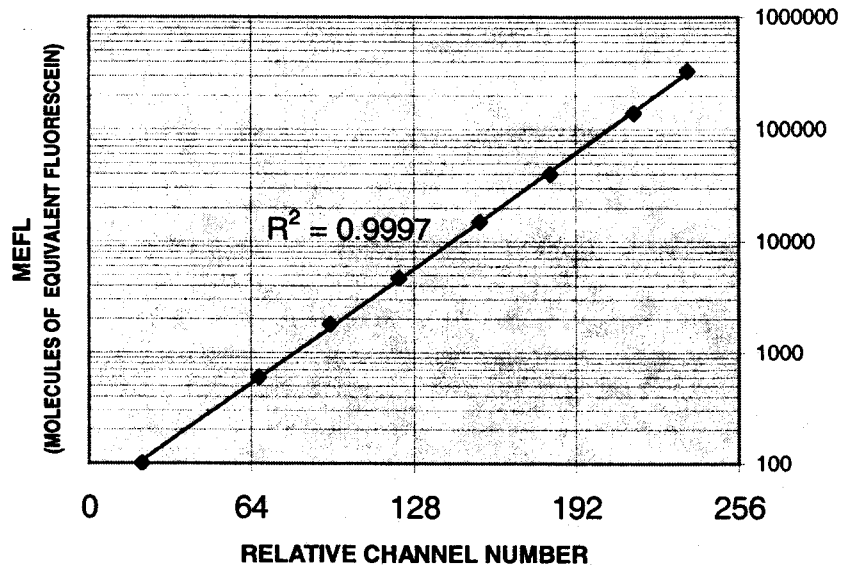
**FOR RESEARCH APPLICATIONS ONLY. NOT FOR DIAGNOSTIC USE.**

# HISTOGRAMS



**SPHERO™ Rainbow Calibration Particles, 8 peaks**  
 CATALOG NO.: RCP-30-5A; LOT.: W02

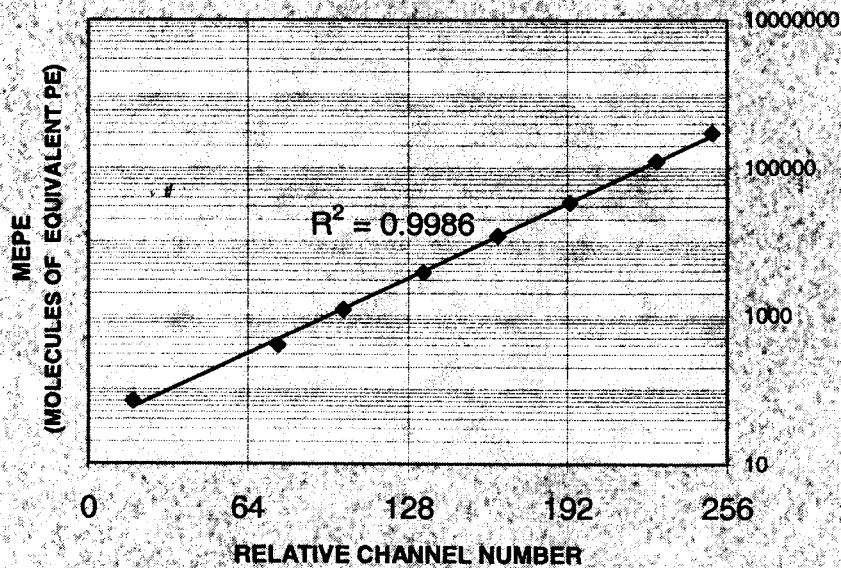
**SPHERO CALIBRATION GRAPH**  
MEFL OF RCP-30-5A (8 PEAKS)



PEAK	CH	MEFL
1	21	100
2	67	600
3	95	1800
4	122	4700
5	154	15000
6	182	40000
7	215	140000
8	236	330000

DR. CODER'S DATA  
30-MEFL-DC-G-041995

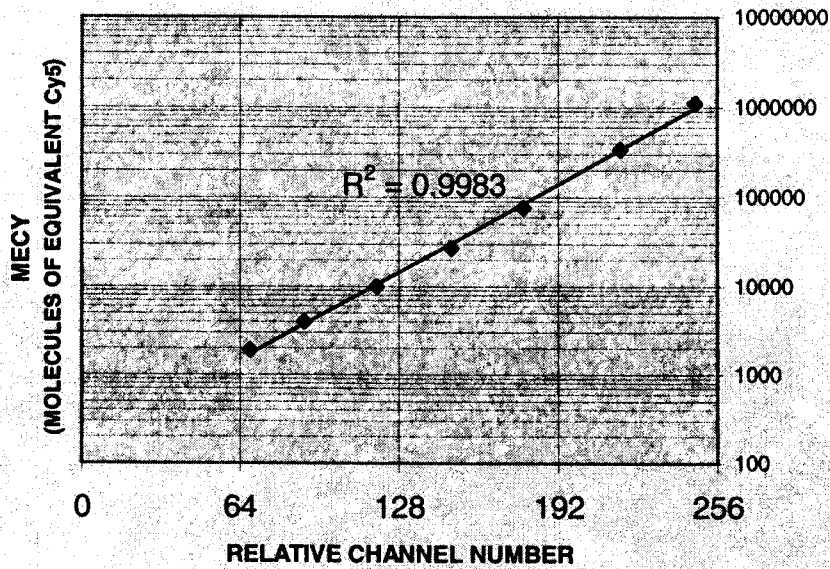
**SPHERO CALIBRATION GRAPH**  
MEPE OF RCP-30-5A (8 PEAKS)



PEAK	CH	MEPE
1	18	70
2	76	400
3	102	1200
4	134	3800
5	164	12000
6	193	34000
7	228	124000
8	250	300000

DR. CODER'S DATA  
30/8-MEPE-G-041995

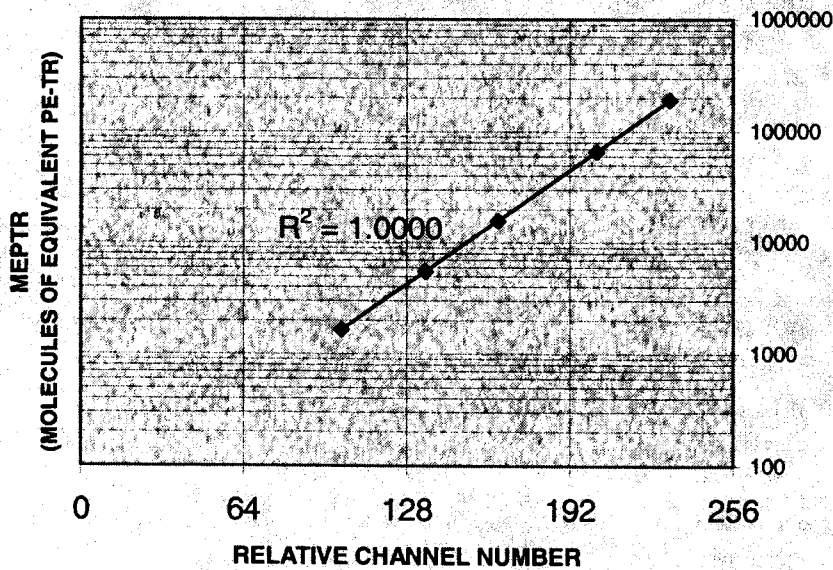
**SPHERO CALIBRATION GRAPH**  
MECY OF RCP-30-5A (8 PEAKS)



PEAK #	CH #	MEPCY
1	(45)	(800)
2	68	1900
3	90	4000
4	119	10000
5	149	27000
6	178	77000
7	217	340000
8	247	1115000

DR. CODER'S DATA  
308-MECY-G-041995A

**SPHERO CALIBRATION GRAPH**  
MEPTR OF RCP-30-5A (8 PEAKS)



PEAK #	CH #	MEPTR
1		
2		
3		
4	103	1660
5	135	5560
6	164	15800
7	202	65940
8	231	190880