

JSB-30

7.5x10cm FORMAT ELECTROPHORESIS SYSTEM

 HORIZONTAL
ELECTROPHORESIS

The Jordan Mini Gel-O Submarine System is used for mini gel format quick screens with up to 18 samples per run. This system can process a large number of samples and is ideal for PCR, fragment analysis, or recombinant screening. The JSB-30 format can run up to 18 samples in under 30 minutes. The JSB-30 is constructed of durable cast acrylic for years of faithful operation.

ORDERING INFORMATION

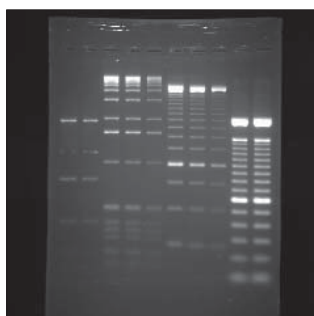
CATALOG#	DESCRIPTION
JSB-30	MINI GEL-O SUBMARINE SYSTEM *Comes complete with lid, UV transmittant casting tray (10cm), casting fixture (10cm), one 1.5mm x 13 tooth comb, comb holder, bubble level, adjustable feet, and power cords.



JSB-30 comes complete with: lid, UV transmittant casting tray (10cm), casting fixture (10cm), one 1.5mm x 13 tooth comb, comb holder, bubble level, adjustable feet, power cords, and operation manual.

The JSB-30 is designed for nucleic acid screening electrophoresis. The maximum suggested applied voltage for the electrophoresis of DNA in agarose gels using the JSB-30 is 150 volts. In a 1% TBE gel, this translates into a run time of approximately 1 hour. Lower voltages may be used, of course, and as a general rule, a 75 volt run will take twice as long as a 150 volt run. Higher voltages may be used to decrease run time; however, if the unit is being operated at higher voltages than 150 volts the heat generated during electrophoresis may decrease sample resolution. Such artifacts may be avoided by running the unit in a cold room or adding 1X electrophoresis buffer "ice cubes" to keep the unit properly cooled.

The suggested run parameters for the electrophoresis of RNA in agarose gels containing formaldehyde are 60-80 volts.



JSB-30 1.0% TBE Gel Run

SPECIFICATIONS

	Height	Width	Length
Unit Dimensions:	7.5cm	10.0cm	28.0cm
Gel Dimensions:		7.5cm	10cm

CAPACITY

- Maximum Sample Capacity: **18 Samples** (1 Comb, 18 Samples Ea.)
- Buffer Capacity: **375ml**
- Distance Between Electrodes: **16.0cm**
- Maximum Voltage: **200V**

ACCESSORIES AND REPLACEMENT PARTS

CATALOG#	DESCRIPTION
CS-3010	JSB-30 Casting Fixture, 10cm
GB-3010	JSB-30 Gel Bed, 10cm
CS-3005	JSB-30 Casting Fixture, 5cm
GB-3005	JSB-30 Gel Bed, 5cm
CS-3075	JSB-30 Casting Fixture, 7.5cm
GB-3075	JSB-30 Gel Bed, 7.5cm
CH-30	JSB-30 Comb Holder
HA-30-B	Replacement JSB-30 Electrode Assembly-Black
HA-30-R	Replacement JSB-30 Electrode Assembly-Red
JSB-30-C	Replacement JSB-30 Lid w/Power Cords
SPC-M4	Replacement Jordan Power Cords
230000-00	Replacement Feet and Bubble Level

ADDITIONAL COMBS AVAILABLE

CATALOG#	DESCRIPTION	WELL WIDTH	SAMPLE VOLUME PER MM GEL
CSM-0808	0.8mm x 8 tooth	5.8mm	4.7µl
CSM-0813	0.8mm x 13 tooth	4.0mm	3.2µl
CSM-0818	0.8mm x 18 tooth	2.3mm	1.9µl
CSM-1508	1.5mm x 8 tooth	5.8mm	8.7µl
CSM-1513	1.5mm x 13 tooth	4.0mm	6.0µl
CSM-1518	1.5mm x 18 tooth	2.3mm	3.5µl

WANT TO SAVE ON AGAROSE?

The JSB-30 has additional gel beds with matching casting fixtures available that allow the user to cast a shorter gel when extended resolution of molecules is not necessary. Ideal for quick screens to verify PCR.

JSB-96

23.5x15cm FORMAT ELECTROPHORESIS SYSTEM

HORIZONTAL
ELECTROPHORESIS

The Jordan Ultra-Wide Mini Gel-O Submarine System is designed for quick screening a large number of samples with limited agarose (100ml) usage. It is ideal for PCR, RFLP analysis, or plasmid screening. The JSB-96 microtiter plate format can run all samples, as well as standards and blanks in under 90 minutes. The microtiter format combs are designed for quick loading with a multichannel pipette. The combs accommodate multiple loading by a micropipetter, leaving room for molecular weight markers. The JSB-96 is constructed of durable cast acrylic, for years of faithful use.

ORDERING INFORMATION

CATALOG#	DESCRIPTION
JSB-96	ULTRA-WIDE MINI GEL-O SUBMARINE SYSTEM *Comes complete with lid, UV transmittant casting tray (15cm), casting fixture (15cm), two 1.5mm x 25 tooth combs, two 1.5mm x 50 tooth combs, two comb holders, bubble level, adjustable feet, and power cords.



JSB-96 comes complete with: lid, UV transmittant casting tray (15cm), casting fixture (15cm), two 1.5mm x 25 tooth combs, two 1.5mm x 50 tooth combs, two comb holders, bubble level, adjustable feet, power cords, and operation manual.



Multichannel Pipette Compatible
(8 or 12 Channel)

The JSB-96 is designed for nucleic acid screening electrophoresis. The maximum suggested applied voltage for the electrophoresis of DNA in agarose gels using the JSB-96 is 170 volts. In a 1% TBE gel, this translates into a run time of approximately 1 hour. Lower voltages may be used, of course, and as a general rule, a 85 volt run will take twice as long as a 170 volt run. Higher voltages may be used to decrease run time; however, if the unit is being operated at higher voltages than 170 volts the heat generated during electrophoresis may decrease sample resolution. Such artifacts may be avoided by running the unit in a cold room or adding 1X electrophoresis buffer "ice cubes" to keep the unit properly cooled.

The suggested run parameters for the electrophoresis of RNA in agarose gels containing formaldehyde are 60-80 volts.

SPECIFICATIONS

	Height	Width	Length
Unit Dimensions:	7.5cm	27.0cm	31.0cm
Gel Dimensions:		23.5cm	15.0cm

CAPACITY

- Maximum Sample Capacity: **200 Samples** (4 Comb, 50 Samples Ea.)
- Buffer Capacity: **850ml**
- Distance Between Electrodes: **19.0cm**
- Maximum Voltage: **200V**

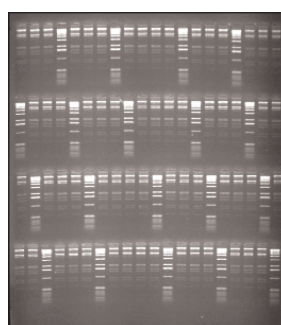
ACCESSORIES AND REPLACEMENT PARTS

CATALOG#	DESCRIPTION
CS-9615	JSB-96 Casting Fixture, 15cm
GB-9615	JSB-96 Gel Bed, 15cm
CS-9610	JSB-96 Casting Fixture, 10cm
GB-9610	JSB-96 Gel Bed, 10cm
CS-9675	JSB-96 Casting Fixture, 7.5cm
GB-9675	JSB-96 Gel Bed, 7.5cm
CH-96	JSB-96 Comb Holder
HA-960-B	Replacement JSB-96 Electrode Assembly-Black
HA-96-R	Replacement JSB-96 Electrode Assembly-Red
JSB-96-C	Replacement JSB-96 Lid w/Power Cords
SPC-M4	Replacement Jordan Power Cords
230000-00	Replacement Feet and Bubble Level

ADDITIONAL COMBS AVAILABLE

CATALOG#	DESCRIPTION	WELL WIDTH	SAMPLE VOLUME PER MM GEL
CB96-0825	0.8mm x 25 tooth, MCP**	5.8mm	4.7µl
CB96-0840	0.8mm x 40 tooth	4.0mm	3.2µl
CB96-0850	0.8mm x 50 tooth, MCP**	2.9mm	2.3µl
CB96-1525	1.5mm x 25 tooth, MCP**	5.8mm	8.7µl
CB96-1540	1.5mm x 40 tooth	4.0mm	6.0µl
CB96-1550	1.5mm x 50 tooth, MCP**	2.9mm	4.4µl
CB96-3025	3.0mm x 25 tooth, MCP**	5.8mm	17.4µl
CB96-3040	3.0mm x 40 tooth	4.0mm	12.0µl
CB96-15P	1.5mm, 2 markers, 1 sample	6.4, 204.0mm	9.6, 306.0µl
CB96-30P	3.0mm, 2 markers, 1 sample	6.4, 204.0mm	19.2, 612.0µl

MCP** - Multichannel Pipette Compatible



JSB-96 1.5% TBE Gel Run

WANT TO SAVE ON AGAROSE?

The JSB-96 has additional gel beds with matching casting fixtures available that allow the user to cast a shorter gel when extended resolution of molecules is not necessary. Ideal for quick screens to verify PCR.

JSB-302

15x10cm FORMAT ELECTROPHORESIS SYSTEM

HORIZONTAL
ELECTROPHORESIS

The Jordan Double-Wide Mini Gel-O Submarine System is used for mini gel format quick screens with twice the number of samples. This system can process a large number of samples and is ideal for PCR, fragment analysis, or recombinant screening. The JSB-302 format can run up to 36 samples in under 30 minutes.

SPECIFICATIONS

	Height	Width	Length
Unit Dimensions:	7.5cm	20.0cm	28.0cm
Gel Dimensions:		15cm	10cm

CAPACITY

- Maximum Sample Capacity: **36 Samples** (1 Comb, 36 Samples Ea.)
- Buffer Capacity: **650ml**
- Distance Between Electrodes: **16.0cm**
- Maximum Voltage: **200V**

ACCESSORIES AND REPLACEMENT PARTS

CATALOG#	DESCRIPTION
CS-3210	JSB-302 Casting Fixture, 10cm
GB-3210	JSB-302 Gel Bed, 10cm
CS-3205	JSB-302 Casting Fixture, 5cm
GB-3205	JSB-302 Gel Bed, 5cm
CS-3275	JSB-302 Casting Fixture, 7.5cm
GB-3275	JSB-302 Gel Bed, 7.5cm
CH-302	JSB-302 Comb Holder
HA-302-B	Replacement JSB-302 Electrode Assembly-Black
HA-302-R	Replacement JSB-302 Electrode Assembly-Red
JSB-302-C	Replacement JSB-302 Lid w/Power Cords
SPC-M4	Replacement Jordan Power Cords
230000-00	Replacement Feet and Bubble Level

ADDITIONAL COMBS AVAILABLE

CATALOG#	DESCRIPTION	WELL WIDTH	SAMPLE VOLUME PER MM GEL
CSD-0816	0.8mm x 16 tooth	5.8mm	4.7µl
CSD-0827	0.8mm x 27 tooth	4.0mm	3.2µl
CSD-0836	0.8mm x 36 tooth	2.3mm	1.9µl
CSD-1516	1.5mm x 16 tooth	5.8mm	8.7µl
CSD-1522	1.5mm x 22 tooth	5.0mm	7.5µl
CSD-1527	1.5mm x 27 tooth	4.0mm	6.0µl
CSD-1533	1.5mm x 33 tooth	3.0mm	4.5µl
CSD-1536	1.5mm x 36 tooth	2.3mm	3.5µl

WANT TO SAVE ON AGAROSE?

The JSB-302 has additional gel beds with matching casting fixtures available that allow the user to cast a shorter gel when extended resolution of molecules is not necessary. Ideal for quick screens to verify PCR.

ORDERING INFORMATION

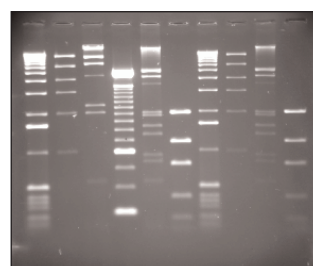
CATALOG#	DESCRIPTION
JSB-302	DOUBLE-WIDE MINI GEL-O SUBMARINE SYSTEM *Comes complete with lid, UV transmittant casting tray (10cm), casting fixture (10cm), one 1.5mm x 27 tooth comb, comb holder, bubble level, adjustable feet, and power cords.



JSB-302 comes complete with: lid, UV transmittant casting tray (10cm), casting fixture (10cm), one 1.5mm x 27 tooth comb, comb holder, bubble level, adjustable feet, power cords, and operation manual.

The JSB-302 is designed for nucleic acid screening electrophoresis. The maximum suggested applied voltage for the electrophoresis of DNA in agarose gels using the JSB-302 is 150 volts. In a 1% TBE gel, this translates into a run time of approximately 1 hour. Lower voltages may be used, of course, and as a general rule, a 75 volt run will take twice as long as a 150 volt run. Higher voltages may be used to decrease run time; however, if the unit is being operated at higher voltages than 150 volts the heat generated during electrophoresis may decrease sample resolution. Such artifacts may be avoided by running the unit in a cold room or adding 1X electrophoresis buffer "ice cubes" to keep the unit properly cooled.

The suggested run parameters for the electrophoresis of RNA in agarose gels containing formaldehyde are 60-80 volts.



JSB-302 1.0% TBE Gel Run

JVD-80

16x18cm DUAL-SLAB VERTICAL GEL SYSTEM

VERTICAL
ELECTROPHORESIS

The JVD-80 Dual-Slab Vertical Gel System allows rapid analysis of protein and nucleic acid samples in a 16x18cm polyacrylamide gels. This system allows analysis to be completed in less than 90 minutes, while maintaining comparable resolution. For greater flexibility, the JVD-80 dual vertical system is adjustable from 16cm to 42cm to 62cm tall, increasing resolution 2.5X. The user can run a single gel or two gels at once. The JVD-80 is made from durable cast acrylic, for years of faithful service. The foolproof gasket and notched plates eliminate leaking during usage. The large upper reservoir is designed to allow easy loading of samples.

SPECIFICATIONS

	Height	Width	Length
Unit Dimensions:	12.5cm	22.0cm	39.5cm
Gel Dimensions:		18.0cm	16.0cm

CAPACITY

- Maximum Sample Capacity: **27 Samples** (1 Comb, 27 Samples Ea.)
- Buffer Capacity: **500ml** - Upper Reservoir
500ml - Lower Reservoir
- Maximum Voltage: **600V**

ACCESSORIES AND REPLACEMENT PARTS

CATALOG#	DESCRIPTION
SPC-M4	Power Cords, Red and Black
CTP-125	Casting Tape
GNP-16	Notched Glass Plate, 16cm
GNP-42	Notched Glass Plate, 42cm
GNP-62	Notched Glass Plate, 62cm
GPP-16	Glass Plate Set, 16cm
GPP-16A	Outer Glass Plate, 16cm
GPP-42	Glass Plate Set, 42cm
GP-42	Outer Glass Plate, 42cm
GP-62	Outer Glass Plate, 62cm
SR-16	18cm Support Rods
SR-42	42cm Support Rods
SR-62	62cm Support Rods

ADDITIONAL SPACER SETS AVAILABLE

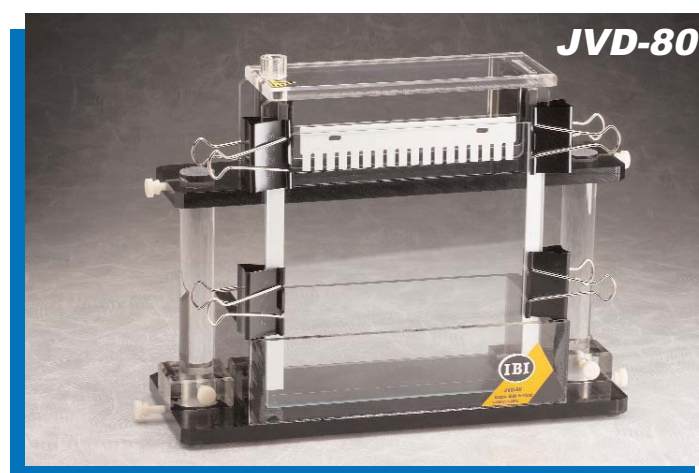
CATALOG#	DESCRIPTION
SP-0416	0.4mm Spacer Set - 16cm gels
SP-0816	0.8mm Spacer Set - 16cm gels
SP-1516	1.5mm Spacer Set - 16cm gels
SP-3016	3.0mm Spacer Set - 16cm gels
SP-0442	0.4mm Spacer Set - 42cm gels
SP-0842	0.8mm Spacer Set - 42cm gels
SP-1542	1.5mm Spacer Set - 42cm gels
SP-3042	3.0mm Spacer Set - 42cm gels
SP-0462	0.4mm Spacer Set - 62cm gels
SP-0862	0.8mm Spacer Set - 62cm gels
SP-1562	1.5mm Spacer Set - 62cm gels
SP-3062	3.0mm Spacer Set - 62cm gels

ADDITIONAL COMBS AVAILABLE (CONTINUED)

CATALOG#	DESCRIPTION	WELL WIDTH	VOLUME PER MM WELL DEPTH
CP-04P	0.4mm, 2 markers, 1 sample	6.3, 152.4mm	2.5, 61.0μl
CP-08P	0.8mm, 2 markers, 1 sample	6.3, 152.4mm	5.0, 121.9μl
CP-15P	1.5mm, 2 markers, 1 sample	6.3, 152.4mm	9.5, 228.6μl
CP-30P	3.0mm, 2 markers, 1 sample	6.3, 152.4mm	18.9, 457.2μl
PF-26P	0.4mm x 26 tooth*	3.0mm	1.2μl
PF-36P	0.4mm x 32 tooth*	2.5mm	1.0μl
PF-46P	0.4mm x 46 tooth*	2.0mm	0.8μl

ORDERING INFORMATION

CATALOG#	DESCRIPTION
JVD-80	DUAL-SLAB VERTICAL ELECTROPHORESIS SYSTEM *Comes complete with upper and lower reservoirs, two inner glass plates, two outer glass plates, 16cm support rods, two 1.5mm x 18 tooth combs, two 1.5mm spacer set, four spacer tabs, safety covers, eight sandwich clips, & power cords.



JVD-80 comes complete with: upper and lower reservoirs, two inner glass plates, two outer glass plates, 16cm support rods, two 1.5mm x 18 tooth combs, two 1.5mm spacer set, four spacer tabs, safety covers, eight sandwich clips, power cords, and operation manual.

ADDITIONAL COMBS AVAILABLE

CATALOG#	DESCRIPTION	WELL WIDTH	VOLUME PER MM WELL DEPTH
CP-0406	0.4mm x 6 tooth	25.4mm	10.1μl
CP-0412	0.4mm x 12 tooth	9.9mm	4.0μl
CP-0418	0.4mm x 18 tooth	5.8mm	2.3μl
CP-0427	0.4mm x 27 tooth	4.0mm	1.6μl
CP-0806	0.8mm x 6 tooth	25.4mm	20.3μl
CP-0812	0.8mm x 12 tooth	9.9mm	7.9μl
CP-0818	0.8mm x 18 tooth	5.8mm	4.6μl
CP-0827	0.8mm x 27 tooth	4.0mm	3.2μl
CP-1506	1.5mm x 6 tooth	25.4mm	38.1μl
CP-1512	1.5mm x 12 tooth	9.9mm	14.9μl
CP-1518	1.5mm x 18 tooth	5.8mm	8.7μl
CP-1527	1.5mm x 27 tooth	4.0mm	6.0μl
CP-3006	3.0mm x 6 tooth	25.4mm	76.2μl
CP-3012	3.0mm x 12 tooth	9.9mm	29.7μl
CP-3018	3.0mm x 18 tooth	5.8mm	17.4μl
CP-3027	3.0mm x 27 tooth,	4.0mm	12.0μl

* Picket Fence combs are used for sequencing with 42cm conversion.

IB62000

18x22CM FORMAT VERTICAL GEL SYSTEM

VERTICAL
ELECTROPHORESIS

IBI's Variable Comb Vertical (VCV) System is designed for high resolution and rapid analysis of protein and nucleic acid samples in 18x22cm format agarose and polyacrylamide gels. This system allows analysis to be completed in less than 90 minutes, while maintaining comparable resolution. It is ideal for mapping or blotting procedures. The 0.8mm gel thickness gives uniformity of thin vertical gels, allows sharper band patterns, quicker denaturation, and fragment transfer. Its simple design, durable construction, and variety of accessories enable the VCV system to be used for many different applications.

ORDERING INFORMATION

CATALOG#	DESCRIPTION
IB62000	VCV VERTICAL GEL SYSTEM *Comes complete with safety lid, one 1.5mm x 12 tooth comb, 1.5mm x 20 tooth comb, 1.5mm spacer set, two spacer tabs, inner glass plate, outer glass plate, frosted glass plate, four sandwich clips & power cords.

SPECIFICATIONS

	Height	Width	Length
Unit Dimensions:	29.0cm	36.0cm	12.5cm
Gel Dimensions:		18.0cm	22.0cm

CAPACITY

- Maximum Sample Capacity: **20 Samples** (1 Comb, 20 Samples Ea.)
- Buffer Capacity: **550ml** - Upper Reservoir
550ml - Lower Reservoir
- Maximum Voltage: **600V**

ACCESSORIES AND REPLACEMENT PARTS

CATALOG#	DESCRIPTION
SPC-M4	Power Cords, Red and Black
IB62200	Replacement Lid, w/Power Cords
IB62600	Replacement Gasket
IB62425	0.8mm Reversible Spacer Set
IB62235	1.5mm Reversible Spacer Set
IB62445	3.0mm Reversible Spacer Set
IB62545	VCV Inner Glass Plate
IB62555	VCV Frosted Inner Glass Plate
IB62585	VCV Outer Glass Plate



IB62000 comes complete with: safety lid, one 1.5mm x 12 tooth comb, 1.5mm x 20 tooth comb, 1.5mm spacer set, two spacer tabs, inner glass plate, outer glass plate, frosted glass plate, four sandwich clips, power cords, and operation manual.

ADDITIONAL COMBS AVAILABLE

CATALOG#	DESCRIPTION	WELL WIDTH	VOLUME PER MM WELL DEPTH
IB62045	0.8mm x 12 tooth	10.0mm	8μl
IB62105	0.8mm x 20 tooth	5.0mm	4μl
IB62055	1.5mm x 12 tooth	10.0mm	15μl
IB62115	1.5mm x 20 tooth	5.0mm	7.5μl
IB62065	3.0mm x 12 tooth	10.0mm	30μl
IB62125	3.0mm x 20 tooth	5.0mm	15μl
IB62345	0.8mm, 2 markers, 2 sample	6.3, 72.0mm	5.0, 57.6μl
IB62355	1.5mm, 2 markers, 2 sample	6.3, 72.0mm	9.5, 108.0μl
IB62365	3.0mm, 2 markers, 1 sample	6.3, 147.0mm	18.9, 441.0μl
IB62375	3.0mm, 2 markers, 2 sample	6.3, 72.0mm	18.9, 216.0μl