

# START-UP KITS

## DNA AND PROTEIN KITS

IBI's DNA Lab Start-Up Kits combine high quality IBI horizontal electrophoresis systems and IBI molecular biology reagents to make up an excellent value for your new lab start-up. Each kit contains a complete horizontal electrophoresis system, one liter of 10X TAE buffer concentrate, one liter of 10X TBE buffer concentrate, a 5ml bottle of 6X loading dye, and 100gm of IBI molecular biology grade agarose. *Everything you need to begin research or teaching in your lab!*

### ORDERING INFORMATION

CATALOG#	DESCRIPTION
IB50000B	<b>QSH LAB-PAL DNA START-UP KIT</b> *Each kit comes complete with an IB50000 QSH Lab-Pal unit, 6X loading dye, 10X TAE buffer, 10X TBE buffer, and 100gm of molecular biology grade agarose.

### ORDERING INFORMATION

CATALOG#	DESCRIPTION
IB51000B	<b>QS-710 DNA START-UP KIT</b> *Each kit comes complete with an IB51000 QS-710 unit, 6X loading dye, 10X TAE buffer, 10X TBE buffer, and 100gm of molecular biology grade agarose.

### ORDERING INFORMATION

CATALOG#	DESCRIPTION
IB53000B	<b>MP-1015 DNA START-UP KIT</b> *Each kit comes complete with an IB53000 MP-1015 unit, 6X loading dye, 10X TAE buffer, 10X TBE buffer, and 100gm of molecular biology grade agarose.

### ORDERING INFORMATION

CATALOG#	DESCRIPTION
IB56000B	<b>HR-2025 DNA START-UP KIT</b> *Each kit comes complete with an IB56000 HR-2025 unit, 6X loading dye, 10X TAE buffer, 10X TBE buffer, and 100gm of molecular biology grade agarose.

### ORDERING INFORMATION

CATALOG#	DESCRIPTION
IB57000B	<b>HR-2525 DNA START-UP KIT</b> *Each kit comes complete with an IB57000 HR-2525 unit, 6X loading dye, 10X TAE buffer, 10X TBE buffer, and 100gm of molecular biology grade agarose.



**IB51000B comes complete with:** IB51000 electrophoresis system, IB01010 (6X loading dye), IB70040 (agarose), IB70150 (10X TBE buffer), and IB70160 (10X TAE buffer)

IBI's Protein Lab Start-Up Kits are made from the NEW IB94000 MaGELin protein system, designed to run 10x10cm cast-your-own polyacrylamide gels or various other pre-cast gels in a dual running format. This kit also includes high quality IBI molecular biology reagents for your protein system needs. Included is one liter of 10X Tris-Glycine-SDS running buffer, a 5ml bottle of 2X protein loading dye, and 1L of Blue-Clean stain.

### ORDERING INFORMATION

CATALOG#	DESCRIPTION
IB94000B	<b>MAGELIN PROTEIN START-UP KIT</b> *Each kit comes complete with an IB94000 MaGELin protein system, 2X loading dye, 10X Tris-Glycine-SDS buffer, and 1L of Blue-Clean stain

# IB57000

## 25x25cm FORMAT ELECTROPHORESIS SYSTEM

HORIZONTAL  
ELECTROPHORESIS

IBI's HR-2525, High-Resolution/High-Throughput Electrophoresis Gel Box (25x25cm) is ideal for separation of nucleic acids in agarose gels. It is designed for rapid screening of PCR fragments, RFLP analysis or plasmid screening, field inversion, genomic DNA separations, and electrophoresis procedures requiring recirculation. Up to 50 PCR 8 strips can be completed in 15 minutes. This system is constructed of durable cast acrylic for years of faithful operation. The HR-2525 stands up to high voltages and extreme temperatures exceptionally well, and will not crack or warp unlike most injection molded units. The machined Delrin™ combs come in a variety of configurations, all of which are multichannel pipetter compatible. The quick casting system is based on a compressible gasket for ease of use, without adjustments or leaky gates.

### SPECIFICATIONS

	Height	Width	Length
Unit Dimensions:	8.3cm	26.7cm	39.4cm
Gel Dimensions:		25.0cm	25.0cm

### CAPACITY

- Maximum Sample Capacity: **300 Samples** (6 Combs, 50 Samples Ea.)
- Buffer Capacity: **1500ml**
- Distance Between Electrodes: **35.0cm**
- Maximum Voltage: **200V**

### ACCESSORIES AND REPLACEMENT PARTS

CATALOG#	DESCRIPTION
IB57020	HR-2525 UV Transmittant Casting Tray
IB57021	HR-2525 UV Transmittant Casting Tray - 4 Equal Runs
IB57030	HR-2525 Casting Fixture
IB57040	HR-2525 Casting System (UVT Tray w/Fixture)
IB50500	Replacement Power Cords
IB50501	Replacement Elbows
IB50503	Replacement Feet
IB50504	Replacement Bubble Level
IB50505	Replacement Tank Connector Kit
IB52200	Replacement Tank Kit: Bubble Level, Feet, Buffer Port Kit
IB52210	Replacement Buffer Port Kit
IB57200	Replacement HR-2525 Tank
IB57300	Replacement HR-2525 Lid
IB57305	Replacement HR-2525 Electrode Assembly

### ADDITIONAL COMBS AVAILABLE

CATALOG#	DESCRIPTION	WELL WIDTH	SAMPLE VOLUME PER MM GEL
IB57125	1.0mm x 25 tooth, MCP**	5.8mm	5.8μl
IB57150	1.0mm x 50 tooth, MCP**	2.9mm	2.9μl
IB57225	2.0mm x 25 tooth, MCP**	5.8mm	11.6μl
IB57250	2.0mm x 50 tooth, MCP**	2.9mm	5.8μl
IB57325	3.0mm x 25 tooth, MCP**	5.8mm	17.5μl
IB57350	3.0mm x 50 tooth, MCP**	2.9mm	8.7μl
IB57425	1.5mm x 25 tooth, MCP**	5.8mm	8.7μl
IB57450	1.5mm x 50 tooth, MCP**	2.9mm	4.4μl

MCP\*\* - Multichannel Pipette Compatible

The HR-2525 is designed for high resolution electrophoresis. The maximum suggested applied voltage for the electrophoresis of DNA in agarose gels using the HR-2525 is 140V.

The suggested run parameters for the electrophoresis of RNA in agarose gels containing formaldehyde is 60-80 volts.

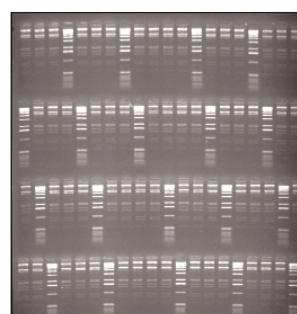
The IB57000 has a patented vented lid. Patent# 5,779,869.

### ORDERING INFORMATION

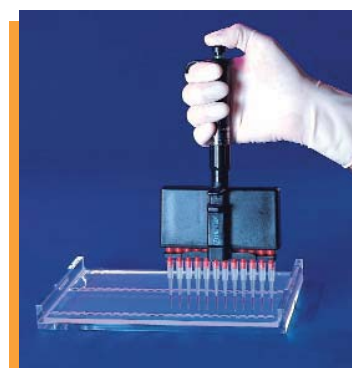
CATALOG#	DESCRIPTION
<b>IB57000</b>	<b>HR-2525 ELECTROPHORESIS SYSTEM (20x25cm)</b> *Comes complete with vented lid, UV transmittant casting tray, casting fixture, four 2.0mm x 50 tooth combs, bubble level, buffer ports, adjustable feet and power cords.



**IB57000 comes complete with:** Patented vented lid, UV transmittant casting tray, casting fixture, four 2.0mm x 50 tooth combs, bubble level, buffer ports, adjustable feet, power cords, and operation manual.



HR-2525 1.5% TBE Gel Run



Multichannel Pipette Compatible  
(8 or 12 Channel)