

IB56000

20x25CM FORMAT ELECTROPHORESIS SYSTEM

 HORIZONTAL
ELECTROPHORESIS

IBI's HR-2025, High-Resolution Electrophoresis Gel Box (20x25cm) is ideal for separation of nucleic acids in agarose gels. It is designed for rapid screening of PCR fragments, RFLP analysis or plasmid screening, field inversion, genomic DNA separations, and electrophoresis, and electrophoresis procedures requiring recirculation. This system is constructed of durable cast acrylic for years of faithful operation. The HR-2025 stands up to high voltages and extreme temperatures exceptionally well, and will not crack or warp unlike most injection molded units. The machined Delrin™ combs come in a variety of configurations, a number of which are multichannel pipetter compatible. The quick casting system is based on a compressible gasket for ease of use, without adjustments or leaky gates.

ORDERING INFORMATION

CATALOG#	DESCRIPTION
IB56000	HR-2025 ELECTROPHORESIS SYSTEM (20x25cm) *Comes complete with vented lid, UV transmittant casting tray, casting fixture, two 2.0mm x 20 tooth combs, bubble level, buffer ports, adjustable feet and power cords.



See page 85
for the HR-2025
Start-Up Kit

IB56000 comes complete with: Patented vented lid, UV transmittant casting tray, casting fixture, two 2.0mm x 20 tooth combs, bubble level, buffer ports, adjustable feet, power cords, and operation manual.

ACCESSORIES AND REPLACEMENT PARTS

CATALOG#	DESCRIPTION
IB56020	HR-2025 UV Transmittant Casting Tray
IB56030	HR-2025 Casting Fixture
IB56040	HR-2025 Casting System (UVT Tray w/Fixture)
IB50500	Replacement Power Cords
IB50501	Replacement Elbows
IB50503	Replacement Feet
IB50504	Replacement Bubble Level
IB50505	Replacement Tank Connector Kit
IB52200	Replacement Tank Kit: Bubble Level, Feet, Buffer Port Kit
IB52210	Replacement Buffer Port Kit
IB54220	HR-2025/HRH QuickLoader
IB56200	Replacement HR-2025 Tank
IB56300	Replacement HR-2025 Lid
IB56305	Replacement HR-2025 Electrode Assembly

The HR-2025 is designed for high resolution electrophoresis. The maximum suggested applied voltage for the electrophoresis of DNA in agarose gels using the HR-2025 is 140V.

The suggested run parameters for the electrophoresis of RNA in agarose gels containing formaldehyde is 60-80 volts.

The IB56000 has a patented vented lid. Patent# 5,779,869.

SPECIFICATIONS

	Height	Width	Length
Unit Dimensions:	8.3cm	23.5cm	39.4cm
Gel Dimensions:		20.0cm	25.0cm

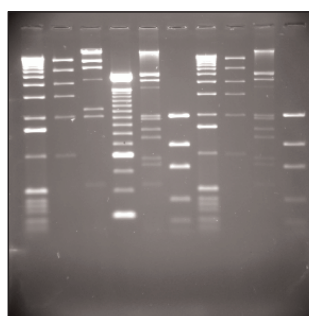
CAPACITY

- Maximum Sample Capacity: **160 Samples** (4 Combs, 40 Samples Ea.)
- Buffer Capacity: **1200ml**
- Distance Between Electrodes: **35.0cm**
- Maximum Voltage: **200V**

ADDITIONAL COMBS AVAILABLE

CATALOG#	DESCRIPTION	WELL WIDTH	SAMPLE VOLUME PER MM GEL
IB54180	1.0mm x 10 tooth	16.6mm	16.6µl
IB56050	1.0mm x 12 tooth	13.1mm	13.1µl
IB56055	1.0mm x 15 tooth	9.8mm	9.8µl
IB54060	1.0mm x 20 tooth	6.5mm	6.5µl
IB54090	1.0mm x 30 tooth	4.0mm	4.0µl
IB56100	1.0mm x 40 tooth	3.2mm	3.2µl
IB56101	1.0mm x 44 tooth, MCP**	2.9mm	2.9µl
IB54190	2.0mm x 10 tooth	16.6mm	49.8µl
IB56115	2.0mm x 12 tooth	13.1mm	26.2µl
IB56125	2.0mm x 15 tooth	9.8mm	19.6µl
IB54070	2.0mm x 20 tooth	6.5mm	13.0µl
8091100	2.0mm x 22 tooth, MCP**	6.3mm	12.6µl
IB54100	2.0mm x 30 tooth	4.0mm	8.0µl
IB56135	2.0mm x 40 tooth	3.2mm	6.4µl
IB56102	2.0mm x 44 tooth, MCP**	2.9mm	5.8µl
IB54080	3.0mm x 20 tooth	6.5mm	19.5µl
8093767	3.0mm x 22 tooth, MCP**	6.3mm	18.9µl
IB54110	3.0mm x 30 tooth	4.0mm	12.0µl
IB56140	3.0mm x 40 tooth	3.2mm	9.6µl
IB56103	3.0mm x 44 tooth, MCP**	2.9mm	8.7µl
IB54120	1.0mm, 2 markers, 1 sample	4.0, 184.0mm	4.0, 184.0µl
IB54140	1.0mm, 2 markers, 2 samples	4.0, 91.0mm	4.0, 91.0µl
IB54130	2.0mm, 2 markers, 1 sample	4.0, 184.0mm	8.0, 368.0µl
IB54150	2.0mm, 2 markers, 2 samples	4.0, 91.0mm	8.0, 182.0µl
IB56145	3.0mm, 2 markers, 1 sample	4.0, 184.0mm	12.0, 552.0µl
IB56150	3.0mm, 2 markers, 2 samples	4.0, 91.0mm	12.0, 273.0µl

MCP** - Multichannel Pipette Compatible



HR-2025 1.0% TBE Gel Run