

IB56000

20x25CM FORMAT ELECTROPHORESIS SYSTEM

 HORIZONTAL
ELECTROPHORESIS

IBI's HR-2025, High-Resolution Electrophoresis Gel Box (20x25cm) is ideal for separation of nucleic acids in agarose gels. It is designed for rapid screening of PCR fragments, RFLP analysis or plasmid screening, field inversion, genomic DNA separations, and electrophoresis, and electrophoresis procedures requiring recirculation. This system is constructed of durable cast acrylic for years of faithful operation. The HR-2025 stands up to high voltages and extreme temperatures exceptionally well, and will not crack or warp unlike most injection molded units. The machined Delrin™ combs come in a variety of configurations, a number of which are multichannel pipetter compatible. The quick casting system is based on a compressible gasket for ease of use, without adjustments or leaky gates.

ORDERING INFORMATION

| CATALOG# | DESCRIPTION |
|----------|---|
| IB56000 | HR-2025 ELECTROPHORESIS SYSTEM (20x25cm) *Comes complete with vented lid, UV transmittant casting tray, casting fixture, two 2.0mm x 20 tooth combs, bubble level, buffer ports, adjustable feet and power cords. |



See page 85
for the HR-2025
Start-Up Kit

IB56000 comes complete with: Patented vented lid, UV transmittant casting tray, casting fixture, two 2.0mm x 20 tooth combs, bubble level, buffer ports, adjustable feet, power cords, and operation manual.

ACCESSORIES AND REPLACEMENT PARTS

| CATALOG# | DESCRIPTION |
|----------|---|
| IB56020 | HR-2025 UV Transmittant Casting Tray |
| IB56030 | HR-2025 Casting Fixture |
| IB56040 | HR-2025 Casting System (UVT Tray w/Fixture) |
| IB50500 | Replacement Power Cords |
| IB50501 | Replacement Elbows |
| IB50503 | Replacement Feet |
| IB50504 | Replacement Bubble Level |
| IB50505 | Replacement Tank Connector Kit |
| IB52200 | Replacement Tank Kit: Bubble Level, Feet, Buffer Port Kit |
| IB52210 | Replacement Buffer Port Kit |
| IB54220 | HR-2025/HRH QuickLoader |
| IB56200 | Replacement HR-2025 Tank |
| IB56300 | Replacement HR-2025 Lid |
| IB56305 | Replacement HR-2025 Electrode Assembly |

The HR-2025 is designed for high resolution electrophoresis. The maximum suggested applied voltage for the electrophoresis of DNA in agarose gels using the HR-2025 is 140V.

The suggested run parameters for the electrophoresis of RNA in agarose gels containing formaldehyde is 60-80 volts.

The IB56000 has a patented vented lid. Patent# 5,779,869.

SPECIFICATIONS

| | Height | Width | Length |
|------------------|--------|--------|--------|
| Unit Dimensions: | 8.3cm | 23.5cm | 39.4cm |
| Gel Dimensions: | | 20.0cm | 25.0cm |

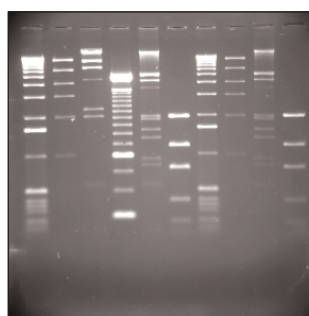
CAPACITY

- Maximum Sample Capacity: **160 Samples** (4 Combs, 40 Samples Ea.)
- Buffer Capacity: **1200ml**
- Distance Between Electrodes: **35.0cm**
- Maximum Voltage: **200V**

ADDITIONAL COMBS AVAILABLE

| CATALOG# | DESCRIPTION | WELL WIDTH | SAMPLE VOLUME PER MM GEL |
|----------|-----------------------------|--------------|--------------------------|
| IB54180 | 1.0mm x 10 tooth | 16.6mm | 16.6µl |
| IB56050 | 1.0mm x 12 tooth | 13.1mm | 13.1µl |
| IB56055 | 1.0mm x 15 tooth | 9.8mm | 9.8µl |
| IB54060 | 1.0mm x 20 tooth | 6.5mm | 6.5µl |
| IB54090 | 1.0mm x 30 tooth | 4.0mm | 4.0µl |
| IB56100 | 1.0mm x 40 tooth | 3.2mm | 3.2µl |
| IB56101 | 1.0mm x 44 tooth, MCP** | 2.9mm | 2.9µl |
| IB54190 | 2.0mm x 10 tooth | 16.6mm | 49.8µl |
| IB56115 | 2.0mm x 12 tooth | 13.1mm | 26.2µl |
| IB56125 | 2.0mm x 15 tooth | 9.8mm | 19.6µl |
| IB54070 | 2.0mm x 20 tooth | 6.5mm | 13.0µl |
| 8091100 | 2.0mm x 22 tooth, MCP** | 6.3mm | 12.6µl |
| IB54100 | 2.0mm x 30 tooth | 4.0mm | 8.0µl |
| IB56135 | 2.0mm x 40 tooth | 3.2mm | 6.4µl |
| IB56102 | 2.0mm x 44 tooth, MCP** | 2.9mm | 5.8µl |
| IB54080 | 3.0mm x 20 tooth | 6.5mm | 19.5µl |
| 8093767 | 3.0mm x 22 tooth, MCP** | 6.3mm | 18.9µl |
| IB54110 | 3.0mm x 30 tooth | 4.0mm | 12.0µl |
| IB56140 | 3.0mm x 40 tooth | 3.2mm | 9.6µl |
| IB56103 | 3.0mm x 44 tooth, MCP** | 2.9mm | 8.7µl |
| IB54120 | 1.0mm, 2 markers, 1 sample | 4.0, 184.0mm | 4.0, 184.0µl |
| IB54140 | 1.0mm, 2 markers, 2 samples | 4.0, 91.0mm | 4.0, 91.0µl |
| IB54130 | 2.0mm, 2 markers, 1 sample | 4.0, 184.0mm | 8.0, 368.0µl |
| IB54150 | 2.0mm, 2 markers, 2 samples | 4.0, 91.0mm | 8.0, 182.0µl |
| IB56145 | 3.0mm, 2 markers, 1 sample | 4.0, 184.0mm | 12.0, 552.0µl |
| IB56150 | 3.0mm, 2 markers, 2 samples | 4.0, 91.0mm | 12.0, 273.0µl |

MCP** - Multichannel Pipette Compatible



HR-2025 1.0% TBE Gel Run