

START-UP KITS

DNA AND PROTEIN KITS

コスモ・バイオ株式会社

HORIZONTAL
ELECTROPHORESIS

IBI's DNA Lab Start-Up Kits combine high quality IBI horizontal electrophoresis systems and IBI molecular biology reagents to make up an excellent value for your new lab start-up. Each kit contains a complete horizontal electrophoresis system, one liter of 10X TAE buffer concentrate, one liter of 10X TBE buffer concentrate, a 5ml bottle of 6X loading dye, and 100gm of IBI molecular biology grade agarose. *Everything you need to begin research or teaching in your lab!*

ORDERING INFORMATION

CATALOG#	DESCRIPTION
----------	-------------

IB50000B	QSH LAB-PAL DNA START-UP KIT
-----------------	-------------------------------------

*Each kit comes complete with an IB50000 QSH Lab-Pal unit, 6X loading dye, 10X TAE buffer, 10X TBE buffer, and 100gm of molecular biology grade agarose.

ORDERING INFORMATION

CATALOG#	DESCRIPTION
----------	-------------

IB51000B	QS-710 DNA START-UP KIT
-----------------	--------------------------------

*Each kit comes complete with an IB51000 QS-710 unit, 6X loading dye, 10X TAE buffer, 10X TBE buffer, and 100gm of molecular biology grade agarose.

ORDERING INFORMATION

CATALOG#	DESCRIPTION
----------	-------------

IB53000B	MP-1015 DNA START-UP KIT
-----------------	---------------------------------

*Each kit comes complete with an IB53000 MP-1015 unit, 6X loading dye, 10X TAE buffer, 10X TBE buffer, and 100gm of molecular biology grade agarose.

ORDERING INFORMATION

CATALOG#	DESCRIPTION
----------	-------------

IB56000B	HR-2025 DNA START-UP KIT
-----------------	---------------------------------

*Each kit comes complete with an IB56000 HR-2025 unit, 6X loading dye, 10X TAE buffer, 10X TBE buffer, and 100gm of molecular biology grade agarose.

ORDERING INFORMATION

CATALOG#	DESCRIPTION
----------	-------------

IB57000B	HR-2525 DNA START-UP KIT
-----------------	---------------------------------

*Each kit comes complete with an IB57000 HR-2525 unit, 6X loading dye, 10X TAE buffer, 10X TBE buffer, and 100gm of molecular biology grade agarose.



IB51000B comes complete with: IB51000 electrophoresis system, IB01010 (6X loading dye), IB70040 (agarose), IB70150 (10X TBE buffer), and IB70160 (10X TAE buffer)

IBI's Protein Lab Start-Up Kits are made from the NEW IB94000 MaGELin protein system, designed to run 10x10cm cast-your-own polyacrylamide gels or various other pre-cast gels in a dual running format. This kit also includes high quality IBI molecular biology reagents for your protein system needs. Included is one liter of 10X Tris-Glycine-SDS running buffer, a 5ml bottle of 2X protein loading dye, and 1L of Blue-Clean stain.

ORDERING INFORMATION

CATALOG#	DESCRIPTION
----------	-------------

IB94000B	MAGELIN PROTEIN START-UP KIT
-----------------	-------------------------------------

*Each kit comes complete with an IB94000 MaGELin protein system, 2X loading dye, 10X Tris-Glycine-SDS buffer, and 1L of Blue-Clean stain

IB56000

20x25cm FORMAT ELECTROPHORESIS SYSTEM

HORIZONTAL
ELECTROPHORESIS

IBI's HR-2025, High-Resolution Electrophoresis Gel Box (20x25cm) is ideal for separation of nucleic acids in agarose gels. It is designed for rapid screening of PCR fragments, RFLP analysis or plasmid screening, field inversion, genomic DNA separations, and electrophoresis, and electrophoresis procedures requiring recirculation. This system is constructed of durable cast acrylic for years of faithful operation. The HR-2025 stands up to high voltages and extreme temperatures exceptionally well, and will not crack or warp unlike most injection molded units. The machined Delrin™ combs come in a variety of configurations, a number of which are multichannel pipetter compatible. The quick casting system is based on a compressible gasket for ease of use, without adjustments or leaky gates.

ORDERING INFORMATION

CATALOG#	DESCRIPTION
IB56000	HR-2025 ELECTROPHORESIS SYSTEM (20x25cm) *Comes complete with vented lid, UV transmittant casting tray, casting fixture, two 2.0mm x 20 tooth combs, bubble level, buffer ports, adjustable feet and power cords.



IB56000 comes complete with: Patented vented lid, UV transmittant casting tray, casting fixture, two 2.0mm x 20 tooth combs, bubble level, buffer ports, adjustable feet, power cords, and operation manual.

ACCESSORIES AND REPLACEMENT PARTS

CATALOG#	DESCRIPTION
IB56020	HR-2025 UV Transmittant Casting Tray
IB56030	HR-2025 Casting Fixture
IB56040	HR-2025 Casting System (UVT Tray w/Fixture)
IB50500	Replacement Power Cords
IB50501	Replacement Elbows
IB50503	Replacement Feet
IB50504	Replacement Bubble Level
IB50505	Replacement Tank Connector Kit
IB52200	Replacement Tank Kit: Bubble Level, Feet, Buffer Port Kit
IB52210	Replacement Buffer Port Kit
IB54220	HR-2025/HRH QuickLoader
IB56200	Replacement HR-2025 Tank
IB56300	Replacement HR-2025 Lid
IB56305	Replacement HR-2025 Electrode Assembly

The HR-2025 is designed for high resolution electrophoresis. The maximum suggested applied voltage for the electrophoresis of DNA in agarose gels using the HR-2025 is 140V.

The suggested run parameters for the electrophoresis of RNA in agarose gels containing formaldehyde is 60-80 volts.

The IB56000 has a patented vented lid. Patent# 5,779,869.

SPECIFICATIONS

	Height	Width	Length
Unit Dimensions:	8.3cm	23.5cm	39.4cm
Gel Dimensions:		20.0cm	25.0cm

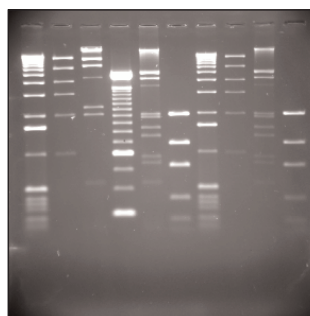
CAPACITY

- Maximum Sample Capacity: **160 Samples** (4 Combs, 40 Samples Ea.)
- Buffer Capacity: **1200ml**
- Distance Between Electrodes: **35.0cm**
- Maximum Voltage: **200V**

ADDITIONAL COMBS AVAILABLE

CATALOG#	DESCRIPTION	WELL WIDTH	SAMPLE VOLUME PER MM GEL
IB54180	1.0mm x 10 tooth	16.6mm	16.6μl
IB56050	1.0mm x 12 tooth	13.1mm	13.1μl
IB56055	1.0mm x 15 tooth	9.8mm	9.8μl
IB54060	1.0mm x 20 tooth	6.5mm	6.5μl
IB54090	1.0mm x 30 tooth	4.0mm	4.0μl
IB56100	1.0mm x 40 tooth	3.2mm	3.2μl
IB56101	1.0mm x 44 tooth, MCP**	2.9mm	2.9μl
IB54190	2.0mm x 10 tooth	16.6mm	49.8μl
IB56115	2.0mm x 12 tooth	13.1mm	26.2μl
IB56125	2.0mm x 15 tooth	9.8mm	19.6μl
IB54070	2.0mm x 20 tooth	6.5mm	13.0μl
8091100	2.0mm x 22 tooth, MCP**	6.3mm	12.6μl
IB54100	2.0mm x 30 tooth	4.0mm	8.0μl
IB56135	2.0mm x 40 tooth	3.2mm	6.4μl
IB56102	2.0mm x 44 tooth, MCP**	2.9mm	5.8μl
IB54080	3.0mm x 20 tooth	6.5mm	19.5μl
8093767	3.0mm x 22 tooth, MCP**	6.3mm	18.9μl
IB54110	3.0mm x 30 tooth	4.0mm	12.0μl
IB56140	3.0mm x 40 tooth	3.2mm	9.6μl
IB56103	3.0mm x 44 tooth, MCP**	2.9mm	8.7μl
IB54120	1.0mm, 2 markers, 1 sample	4.0, 184.0mm	4.0, 184.0μl
IB54140	1.0mm, 2 markers, 2 samples	4.0, 91.0mm	4.0, 91.0μl
IB54130	2.0mm, 2 markers, 1 sample	4.0, 184.0mm	8.0, 368.0μl
IB54150	2.0mm, 2 markers, 2 samples	4.0, 91.0mm	8.0, 182.0μl
IB56145	3.0mm, 2 markers, 1 sample	4.0, 184.0mm	12.0, 552.0μl
IB56150	3.0mm, 2 markers, 2 samples	4.0, 91.0mm	12.0, 273.0μl

MCP** - Multichannel Pipette Compatible



HR-2025 1.0% TBE Gel Run