

IBI's MP-1015, Multi-Purpose Electrophoresis Gel Box (10x15cm) is a general purpose unit for both extended high-resolution linear runs as well as economical quick screens. It is equipped with recirculation ports for procedures requiring buffer recirculation. The MP-1015 is constructed of durable cast acrylic, which will withstand high voltages and extreme temperatures without cracking or warping, unlike most molded units. The MP-1015 can be transformed into a quick screening unit with samples resolved in just 30-60 minutes. Resolution of restriction digestions, plasmid purification, and ligation reactions are all possible with short runs. The MP-1015 is also compatible with a number of analytical and preparative combs for virtually every horizontal electrophoresis application.

### ORDERING INFORMATION

CATALOG#	DESCRIPTION
<b>IB53000</b>	<b>MP-1015 ELECTROPHORESIS SYSTEM (10x15cm)</b> *Comes complete with vented lid, UV transmittant casting tray, casting fixture, two 2.0mm x 16 tooth combs, bubble level, buffer ports, adjustable feet and power cords.



**IB53000 comes complete with:** Patented vented lid, UV transmittant casting tray, casting fixture, two 2.0mm x 16 tooth combs, bubble level, buffer ports, adjustable feet, power cords, and operation manual.

### SPECIFICATIONS

	Height	Width	Length
<b>Unit Dimensions:</b>	7.0cm	16.5cm	30.5cm
<b>Gel Dimensions:</b>		10.0cm	15.0cm

### CAPACITY

- Maximum Sample Capacity: **80 Samples** (4 Combs, 20 Samples Ea.)
- Buffer Capacity: **500ml**
- Distance Between Electrodes: **27.0cm**
- Maximum Voltage: **200V**

The MP-1015 is designed for multipurpose electrophoresis. The maximum suggested applied voltage for the electrophoresis of DNA in agarose gels using the MP-1015 is 140V. In a 1% TBE gel this translates into a run time of approximately 1hr. Lower voltages may be used, of course, and as a general rule a 70V run will take twice as long as a 140V run. Higher voltages may be used to decrease run time. However, if the unit is being operated at higher voltages than 140V the heat generated during electrophoresis may decrease sample resolution. Such artifacts may be avoided by running the unit in a cold room, recirculating buffer, or adding 1X electrophoresis buffer "ice cubes" to keep the unit properly cooled.

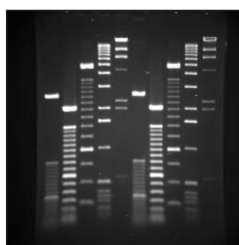
### ACCESSORIES AND REPLACEMENT PARTS

CATALOG#	DESCRIPTION
IB53020	MP-1015 UV Transmittant Casting Tray
IB53021	MP-1015 Next Generation UVT Casting Tray - 5 Lanes
IB53022	MP-1015 Next Generation UVT Casting Tray - 4 Lanes
IB53030	MP-1015 Casting Fixture
IB53040	MP-1015 Casting System (UVT Tray w/Fixture)
IB50500	Replacement Power Cords
IB50501	Replacement Elbows
IB50503	Replacement Feet
IB50504	Replacement Bubble Level
IB50505	Replacement Tank Connector Kit
IB52200	Replacement Tank Kit: Bubble Level, Feet, Buffer Port Kit
IB52210	Replacement Buffer Port Kit
IB52220	MP-1015/MPH QuickLoader
IB53200	Replacement MP-1015 Tank
IB53300	Replacement MP-1015 Lid
IB53305	Replacement MP-1015 Electrode Assembly

### ADDITIONAL COMBS AVAILABLE

CATALOG#	DESCRIPTION	WELL WIDTH	SAMPLE VOLUME PER MM GEL
IB52060	1.0mm x 10 tooth	6.3mm	6.3µl
IB52090	1.0mm x 16 tooth	3.5mm	3.5µl
IB52160	1.0mm x 20 tooth	2.6mm	2.6µl
IB53100	1.5mm x 5 tooth sets	3.0, 9.5mm	4.5, 14.25µl
IB53101	1.5mm x 4 tooth sets	3.0, 9.5mm	4.5, 14.25µl
IB52165	1.5mm x 20 tooth	2.6mm	4.5µl
IB52155	1.5mm x 22 tooth	2.6mm	3.9µl
IB52070	2.0mm x 10 tooth	6.3mm	12.6µl
8920316	2.0mm x 11 tooth, MCP**	6.3mm	12.6µl
IB53070	2.0mm x 13 tooth	4.0mm	8.0µl
IB52100	2.0mm x 16 tooth	3.5mm	7.0µl
IB52170	2.0mm x 20 tooth	2.6mm	5.2µl
IB52080	3.0mm x 10 tooth	6.3mm	18.9µl
8695108	3.0mm x 11 tooth, MCP**	6.3mm	18.9µl
IB52110	3.0mm x 16 tooth	3.5mm	10.5µl
IB52180	3.0mm x 20 tooth	2.6mm	7.8µl
IB52120	1.0mm, 2 markers, 1 sample	2.9, 81.8mm	2.9, 82.0µl
IB52130	2.0mm, 2 markers, 1 sample	2.9, 81.8mm	5.8, 163.0µl
IB53080	3.0mm, 2 markers, 1 sample	2.9, 81.8mm	8.7, 245.0µl
IB52140	1.0mm, 2 markers, 2 samples	2.9, 39.3mm	2.9, 39.0µl
IB52150	2.0mm, 2 markers, 2 samples	2.9, 39.3mm	5.8, 78.0µl
IB53090	3.0mm, 2 markers, 2 samples	2.9, 39.3mm	8.7, 117.0µl

MCP\*\* - Multichannel Pipette Compatible



MP-1015 1.2% TBE  
Gel Run

The suggested run parameters for the electrophoresis of RNA in agarose gels containing formaldehyde is 60-80 volts.

The IB53000 has a patented vented lid. Patent# 5,779,869.