

ColorCode™ Prestained Protein Marker

----- Broad Range

<input type="checkbox"/>	Small	250 µl
<input type="checkbox"/>	Medium	500 µl
<input type="checkbox"/>	Large	1000 µl



15875 Gaither Drive
Gaithersburg, MD 20877
FAX: 301-560-4919
TEL: 301-330-5966
Toll Free: 1-(866)-918-6812
Email: info@signagenlabs.com
Web: www.signagenlabs.com

This product is for laboratory research ONLY and not for diagnostic use

Introduction:

ColorCode™ Prestained Protein Marker (broad range) resolved to 7 sharp bands SDS-PAGE, are mixture of purified proteins with known amino acid sequences. They are provided with a ready-to-use format in a loading buffer containing SDS, reductant and glycerol, etc. The ColorCode™ Prestained Protein Marker can be utilized for SDS-PAGE, IEF, 2-D, and Western blotting. The ColorCode™ Prestained Protein Marker is supplied ready-to-use. There is no need to heat or add reducing agent. The ColorCode™ Prestained Protein Marker allows easy visualization of protein molecular weight ranges during electrophoresis and evaluation of western transfer efficiency.

Applications:

- Molecular weight estimations
- Assessing transfer efficiency
- Monitoring electrophoresis separation

The features of the standard are described as below:

- Sharpest 7 prestained bands ranging from 15~191 kDa
- Normalized molecular weights for the 7 prestained bands
- Ready-to-use format; no dilution and heating needed

Apparent Molecular Weight of Protein Markers:

Proteins	Source	Molecular Weight (kDa)
Myosin	Rabbit Muscle	205
Phosphorylase B	Rabbit Muscle	98
Bovine Serum Albumin	Bovine Milk	66
Ovalbumin	Egg White	45
Carbonic Anhydrase	Bovine Erythrocytes	30
Trypsin Inhibitor	Soybean	20.1
Lysozyme	Bovine Milk	14.3

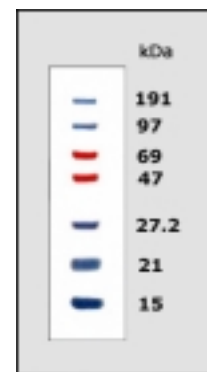
Notes On Use:

- Strongly recommend using Bis-Tris gel rather than Tris-Glycine gel
- Aliquot and prevent freeze and thaw cycles
- Use 5~10 µl for mini-gels and 20 µl for full size gels
- Microcentrifuge briefly and load directly on to a gel

Example:

The apparent molecular weights of the protein bands in ColorCode™ Prestained Protein Marker is shown on right-hand side based on Bis-Tris gel with NuPage MOPS running Buffer. The protein bands may have different mobilities in various SDS-PAGE buffer systems.

For more information on this phenomenon, contact technical service at tech@signagenlabs.com or Call us at 1-866-918-6812



12 % Bis-Tris SDS-PAGE gel with NuPAGE MOPS Running Buffer

Storage: This product is supplied in 70 mM Tris-HCl (pH 6.8 at 25° C), 33 mM NaCl, 1 mM Na₂EDTA, 2% (w/v) SDS, 40 mM dithiothreitol (DTT), 0.01% (w/v) phenol red and 10 % glycerol. Store at -20° C. This item shipped at ambient temperature