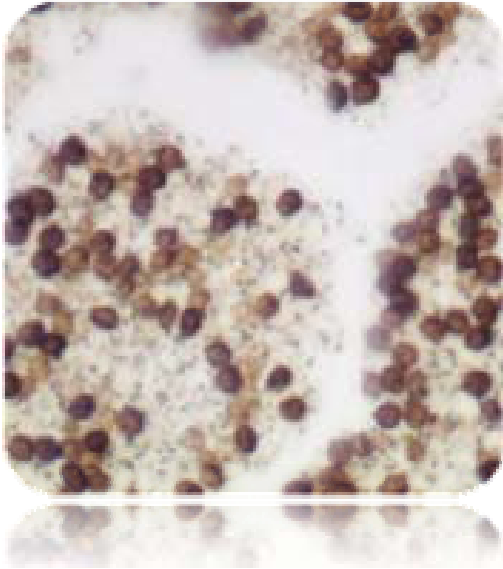


## Warthin-Starry Stain Kit



The Warthin-Starry Stain Kit is intended for use in the visualization of Spirochetes, Helicobacter pylori, Legionella pneumophila, and Cat Scratch Fever bacteria. This kit may be used on formalin-fixed, paraffin-embedded or frozen sections.

Helicobacter pylori: Black

Legionella pneumophila: Black

Spirochetes: Black

Cat Scratch Fever Bacteria: Black

Klebsiella: Brown/Black

Nuclei: Brown

Background: Yellow