



involucrin (N-17): sc-15223



The Power to Question

BACKGROUND

Involucrin is a 68 kDa precursor protein of the keratinocyte cornified envelope, which is formed beneath the inner surface of the cell membrane during terminal differentiation. Involucrin first appears in the cell cytosol but ultimately becomes cross-linked to membrane proteins by transglutaminase. During keratinocyte terminal differentiation glutamine residues of involucrin become covalently cross-linked to other envelope precursors via covalent epsilon-(gamma-glutamyl) lysine bonds. Moreover, its large size allows involucrin to cross-link molecules that are separated by substantial distances in the cornified envelope. These properties allow a single involucrin molecule to form multiple cross-links, in multiple spatial planes, with other envelope precursors. Involucrin is specifically expressed in Chinese hamster ovarian cells (fibroblasts), PtK2 rat kangaroo kidney cells (simple epithelial), and rat epidermal keratinocytes (stratifying squamous epithelial).

REFERENCES

1. Eckert, R.L., et al. 1986. Structure and evolution of the human involucrin gene. *Cell* 46: 583-589.
2. Rorke, E.A., et al. 1991. Stable expression of transfected human involucrin gene in various cell types: evidence for *in situ* cross-linking by type I and type II transglutaminase. *J. Invest. Dermatol.* 97: 543-548.
3. Yaffe, M.B., et al. 1992. Biophysical characterization of involucrin reveals a molecule ideally suited to function as an intermolecular cross-bridge of the keratinocyte cornified envelope. *J. Biol. Chem.* 267: 12233-12238.
4. Crish, J.F., et al. 1993. Tissue-specific and differentiation-appropriate expression of the human involucrin gene in transgenic mice: an abnormal epidermal phenotype. *Differentiation* 53: 191-200.
5. Takahashi, H., et al. 1995. Repression of involucrin gene expression by transcriptional enhancer factor 1 (TEF-1). *Arch. Dermatol. Res.* 287: 740-746.

SOURCE

involucrin (N-17) is an affinity purified goat polyclonal antibody raised against a peptide mapping at the N-terminus of involucrin of human origin.

PRODUCT

Each vial contains 200 µg IgG in 1.0 ml of PBS with < 0.1% sodium azide and 0.1% gelatin.

Blocking peptide available for competition studies, sc-15223 P, (100 µg peptide in 0.5 ml PBS containing < 0.1% sodium azide and 0.2% BSA).

STORAGE

Store at 4° C, **DO NOT FREEZE**. Stable for one year from the date of shipment. Non-hazardous. No MSDS required.

PROTOCOLS

See our web site at www.scbt.com or our catalog for detailed protocols and support products.

APPLICATIONS

involucrin (N-17) is recommended for detection of involucrin of human origin by Western Blotting (starting dilution 1:200, dilution range 1:100-1:1000), immunoprecipitation [1–2 µg per 100–500 µg of total protein (1 ml of cell lysate)], immunofluorescence and immunohistochemistry (including paraffin-embedded sections) (starting dilution 1:50, dilution range 1:50-1:500).

Suitable for use as control antibody for involucrin siRNA (h): sc-35697.

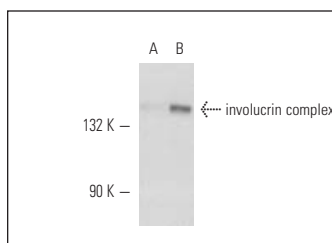
Molecular Weight of involucrin: 68/140 kDa.

Positive Controls: CCD-1064Sk cell lysate: sc-2263 or A-431 + EGF/PE whole cell lysate: sc-24802.

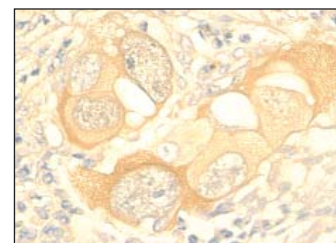
RECOMMENDED SECONDARY REAGENTS

To ensure optimal results, the following support (secondary) reagents are recommended: 1) Western Blotting: use donkey anti-goat IgG-HRP: sc-2020 (dilution range: 1:2000-1:100,000) or Cruz Marker™ compatible donkey anti-goat IgG-HRP: sc-2033 (dilution range: 1:2000-1:5000), Cruz Marker™ Molecular Weight Standards: sc-2035, TBS Blotto A Blocking Reagent: sc-2333 and Western Blotting Luminol Reagent: sc-2048. 2) Immunoprecipitation: use Protein A/G PLUS-Agarose: sc-2003 (0.5 ml agarose/ 2.0 ml). 3) Immunofluorescence: use donkey anti-goat IgG-FITC: sc-2024 (dilution range: 1:100-1:400) or donkey anti-goat IgG-TR: sc-2783 (dilution range: 1:100-1:400) with UltraCruz™ Mounting Medium: sc-24941. 4) Immunohistochemistry: use ImmunoCruz™: sc-2053 or ABC: sc-2023 goat IgG Staining Systems.

DATA



involucrin (N-17): sc-15223. Western blot analysis of involucrin complex expression in untreated A-431 (A) and EGF-induced A-431 (B) whole cell lysates.



involucrin (N-17): sc-15223. Immunoperoxidase staining of formalin fixed, paraffin-embedded human lung tumor tissue showing cytoplasmic localization

RESEARCH USE

For research use only, not for use in diagnostic procedures.