



PRODUCT DESCRIPTION

FOR IN VITRO RESEARCH USE ONLY
NOT FOR USE IN HUMANS OR ANIMALS

ProteinTech Group, Inc
2201 W. Campbell Park Dr.
Chicago, IL 60612
Toll Free: 1-888-4PTGLAB
In Illinois: 1312-455-8498
Fax: 1-312-455-8408
Web: www.ptglab.com

Antibody to MECT1

TORC1; WAMTP1

Mucoepidermoid carcinoma-translocated 1

MECT1/MAML2 fusion gene; Transducer of regulated CREB 1

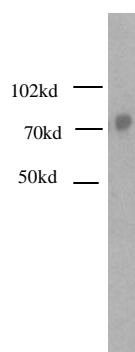
Transducer of regulated cAMP response element-binding protein 1

BC028050

About the antigen:

The antibody:

Format 1: Affinity purified
Catalog No. : 10441-1-AP
Weight/Volume: 30 µg/150 µl
Tested Applications: WB; IHC; IP



293 cell lysates were subjected to SDS PAGE followed by western blot with affinity purified Ab at dilution of 1:1,000

The production

Immunogen: Hu, recombinant protein.
Tested Specificity: Hu, Mo
Host: Rb
Antibody species: Polyclonal

Storage Information:

The antibody is stored at 50% Glycerol in PBS buffer containing 0.02% sodium azide at -20 °C. The final concentration generally is 150 µg/ml for affinity purified antibody. Glycerol was added to a final concentration of 50% to so that antibodies can be stored at -20 °C without going through freeze-thaw cycles during shipping.