



PRODUCT DESCRIPTION

FOR IN VITRO RESEARCH USE ONLY
NOT FOR USE IN HUMANS OR ANIMALS

ProteinTech Group, Inc
2201 W. Campbell Park Dr.
Chicago, IL 60612
Toll Free: 1-888-4PTGLAB
In Illinois: 1312-455-8498
Fax: 1-312-455-8408
Web: www.ptglab.com

Antibody to APG5L

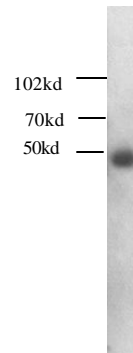
APG5 autophagy 5-like (*S. cerevisiae*), mRNA (cDNA clone MGC:3622 IMAGE:3609927), complete cds

BC002699

About the antigen:

The antibody:

Format 1:	Affinity purified
Catalog No. :	10181-2-AP
Weight/Volume:	30 µg/150 µl
Tested Applications:	WB; IHC; IP



293 cell lysates were subjected to SDS PAGE followed by western blot with affinity purified Ab at dilution of 1:500

The production

Immunogen:	Hu, recombinant protein.
Tested Specificity:	Hu, Mo
Host:	Rb
Antibody species:	Polyclonal

Storage Information:

The antibody is stored at 50% Glycerol in PBS buffer containing 0.02% sodium azide at -20 °C. The final concentration generally is 150 µg/ml for affinity purified antibody. Glycerol was added to a final concentration of 50% to so that antibodies can be stored at -20 °C without going through freeze-thaw cycles during shipping.