

Recombinant Human PSD95/DLG4/Disks large homolog 4

Catalog No: BP196 (CH23)

Description	Recombinant Human Postsynaptic Density Protein 95 is produced by our E.coli expression system and the target gene encoding Met1-Leu724 is expressed with a 6His tag at the N-terminus.
Expression System	E.coli
Alternative name	Disks large homolog 4; Postsynaptic density protein 95; PSD-95; Synapse-associated protein 90; SAP-90; SAP90; PSD95; DLG4
Accession No.	P78352
Predicted Molecular Weight	81.9kDa
Apparent Molecular Weight	66.2-116kDa, reducing conditions.
Quality Control	Purity: greater than 90% as determined by reducing SDS-PAGE. Endotoxin: less than 0.1 ng/μg (1 EU/μg) as determined by LAL test.
Formulation	Lyophilized from a 0.2 μm filtered solution of PBS, pH7.4.
Reconstitution	It is not recommended to reconstitute to a concentration less than 100μg/ml. Dissolve the lyophilized protein in distilled water. Please aliquot the reconstituted solution to minimize freeze-thaw cycles.
Shipping	The product is shipped at ambient temperature. Upon receipt, store it immediately at the temperature listed below.
Storage	Lyophilized protein should be stored at < -20°C, though stable at room temperature for 3 weeks. Reconstituted protein solution can be stored at 4-7°C for 2-7 days. Aliquots of reconstituted samples are stable at < -20°C for 3 months. Always centrifuge tubes before opening. Do not mix by vortex or pipetting.
Background	Disks large homolog 4(DLG4) is a cell membrane protein and it is a member of the membrane-associated guanylate kinase (MAGUK) family. The protein contains 1 guanylate kinase-like domain,3 PDZ (DHR) domains and 1 SH3 domain. With PSD-93 it is recruited into the same NMDA receptor and potassium channel clusters. These two MAGUK proteins may interact at postsynaptic sites to form a multimeric scaffold for the clustering of receptors, ion channels, and associated signaling proteins. DLG4 is the best studied member of the MAGUK-family of PDZ domain-containing proteins. Like all MAGUK-family proteins, its basic structure includes three PDZ domains, an SH3 domain, and a guanylate kinase-like domain (GK) connected by disordered linker regions. It is almost exclusively located in the post synaptic density of neurons, and is involved in anchoring synaptic proteins. Its direct and indirect binding partners include neuroligin, NMDA receptors, AMPA receptors, and potassium channels.

SDS-PAGE

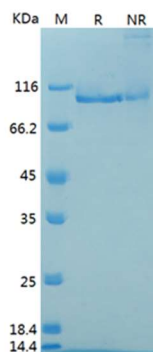


Fig. SDS-PAGE Result of Final sample (12% gel)

M: Protein Marker; R: Reduce sample (2ug); NR: Non-reduce sample (2ug).