

Phos-tag™ Aqua

- Phosphoprotein Gel Staining -



NARD <https://www.nard.co.jp>



人と科学のステキな未来へ
コスモ・バイオ株式会社



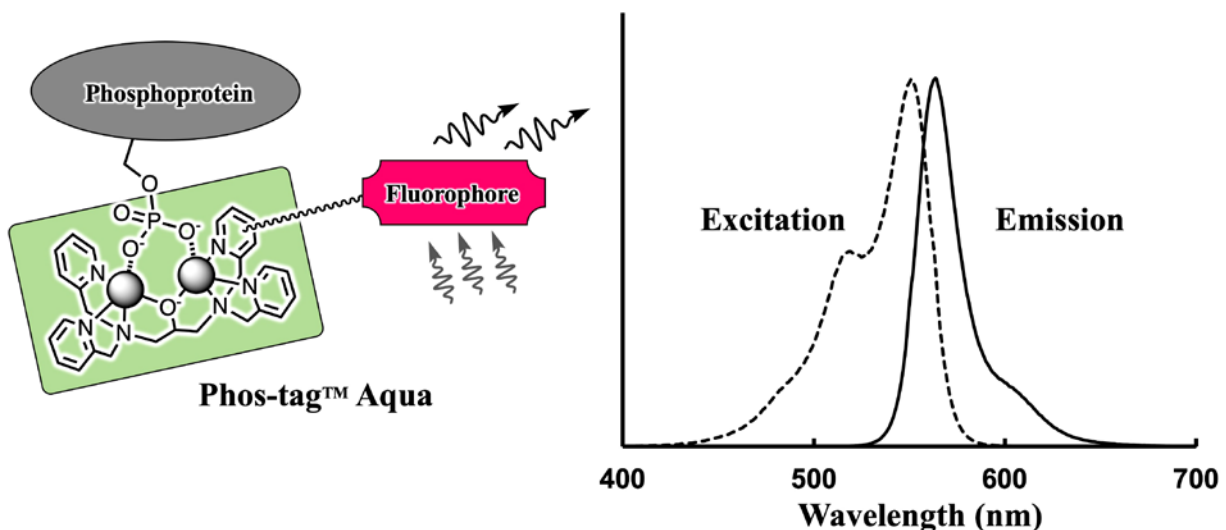
Phos-tag™ Aqua Staining of Phosphoproteins

1. Introduction

Phosphorylation is a fundamental covalent post-translational modification that regulates the function, localization, and binding specificity of target proteins. Methods for determining the phosphorylation status of proteins are thus very important with respect to the evaluation of diverse biological and pathological processes. In 2002, Prof. Koike's group (Hiroshima University) reported a selective phosphate-binding tag molecule, Phos-tag™. Since then, various methods for phosphoproteome research have been developed using Phos-tag™ derivatives. Here, we demonstrate an application of Phos-tag™ for a fluorometric detection of phosphoproteins in a polyacrylamide gel by using Phos-tag™ Aqua.

2. Description of Phos-tag™ Aqua and Phos-tag™ Common Solution

A fluorescent Phos-tag™, Phos-tag™ Aqua, provides a preferential detection of phosphorylated proteins in a SDS-PAGE gel. The product is supplied as a red solid placed in a plastic microtube. Phos-tag™ Common Solution (5x: 5-fold concentrated, neutral pH) is used for the preparation of "Equilibrating & Washing Solution" and "Staining Solution". Below 4°C, the both products are stable for at least 6 months.



3. Warning and Limitations

Phos-tag™ Aqua and Phos-tag™ Common Solution are not for use in human diagnostic and the therapeutic procedures. Do not use internally or externally in human or animals. Those are used only for research. Care should be taken to avoid contact with skin or eyes. We recommend the use of plastic gloves. In the case of contact with skin or eyes wash immediately with water.

4. Advantages of Phos-tag™ Aqua Staining

- # The gel staining involves a simple procedure using two solutions in the basic protocol.
- # The total operation time is very short, ca. 2 h at room temperature.
- # Radioactive phosphorus, chemical labels, and antibody are not required.
- # Phos-tag™ Aqua binds preferentially to phosphorylated amino acid residues.
- # Downstream procedures such as CBB staining and MS analysis are applicable.
- # Phosphoproteins separated by Phos-tag™ SDS-PAGE can be also visualized by Phos-tag™ Aqua.
- # Phos-tag™ Aqua is more hydrophilic than Phos-tag™ Yellow, Magenta, and Cyan.



人と科学のステキな未来へ

コスモ・バイオ株式会社

5. Solutions for Phos-tag™ Aqua Gel Staining

*Equilibrating & Washing Solution: ~1 L

# Phos-tag™ Common Solution (5x)	100 mL
# purified water	400 mL
# methanol	500 mL

*Staining Solution: ~1 L

# Phos-tag™ Aqua	Entire content in 1 microtube
# Phos-tag™ Common Solution (5x)	100 mL
# purified water	400 mL
# methanol	500 mL

Note: Phos-tag™ Aqua should be completely dissolved with 1 mL methanol in the microtube and then the solution is diluted with 499 mL of methanol, 100 mL of Phos-tag™ Common Solution (5x), and 400 mL of purified water.

Caution: Phos-tag™ Aqua gradually adsorbs on aromatic polymer products such as poly(styrene) and poly(ethylene phthalate) bottles, so the staining solution should be contained in a **polypropylene or polyethylene bottle**. The bottle should be stored in the dark at 4°C before use. The adsorption decreases the concentration of Phos-tag™ Aqua resulting in reduce of fluorescence intensity of phosphoproteins. After preparation of Phos-tag™ Aqua staining solution, we recommend that it is used within 6 months.

6. Basic Protocol for Phos-tag™ Aqua Gel Staining: **Figure 1 shows the step-by-step procedure.**

Step 1) After electrophoresis of the target phosphoprotein on a polyacrylamide mini-gel (90 x 80 x 1 mm³), the gel is placed in a staining tray, completely covered with *Equilibrating & Washing Solution* (50 mL) and incubated at room temperature with gentle shaking for 15 min. After the solution is decanted, the same equilibration is conducted again for 15 min.

Step 2) The equilibrating solution is decanted, and the gel is completely covered with *Staining Solution* (50 mL) and incubated at room temperature with gentle shaking for 60 min.

Step 3) The staining solution is decanted, and as much as possible of the residual solution in the staining tray is absorbed on a paper towel. The gel is washed in the tray by gentle shaking with *Equilibrating & Washing Solution* (50 mL) at room temperature for 30 min.

Step 4) Set the gel on the sample stage of a fluorescence imaging apparatus (excitation at 532 nm with a 575-nm longpass emission filter), and then visualize the phosphoprotein. If the imaging of total proteins is needed, CBB staining can be conducted subsequently without pretreatment of the gel (see Figure 2).

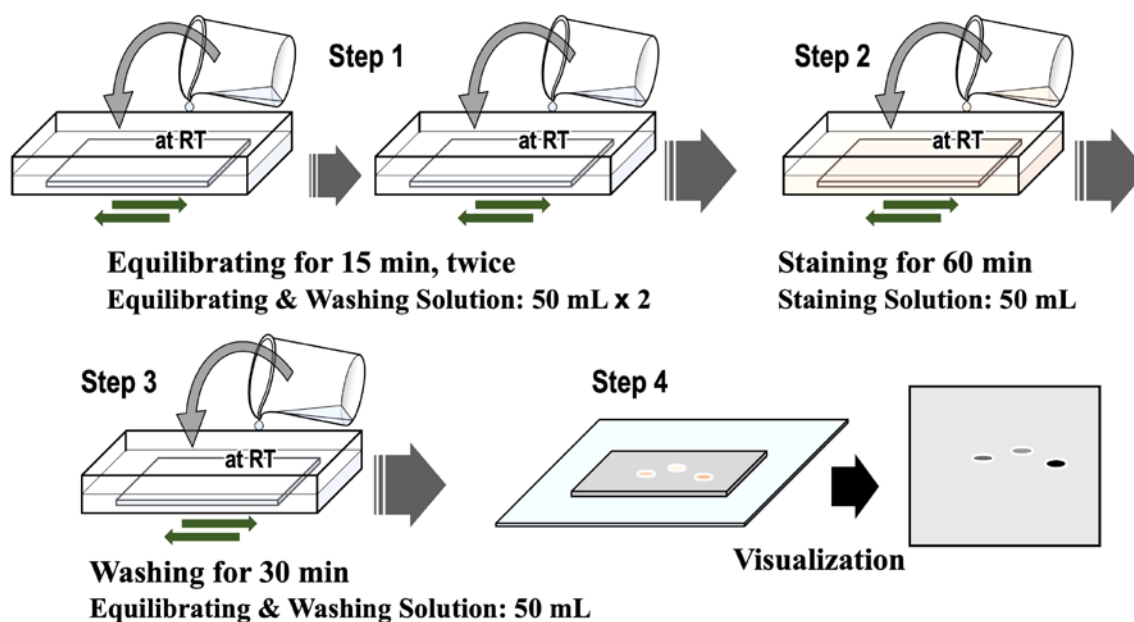


Figure 1. Step-by-step procedure for Phos-tag™ Aqua staining.



人と科学のステキな未来へ

コスモ・バイオ株式会社

Note: Phos-tag™ Aqua gradually adsorbs on aromatic polymer products such as poly(styrene) and poly(ethylene phthalate) staining tray, so the staining is conducted using a **polyethylene or polypropylene tray**. If the Phos-tag™ Aqua adsorbed on a labware, it can be removed by treatment with an aqueous solution of NaClO and a sufficient amount of water.

In all the steps, the staining tray is covered with aluminum foil (or a black box) to protect from light.

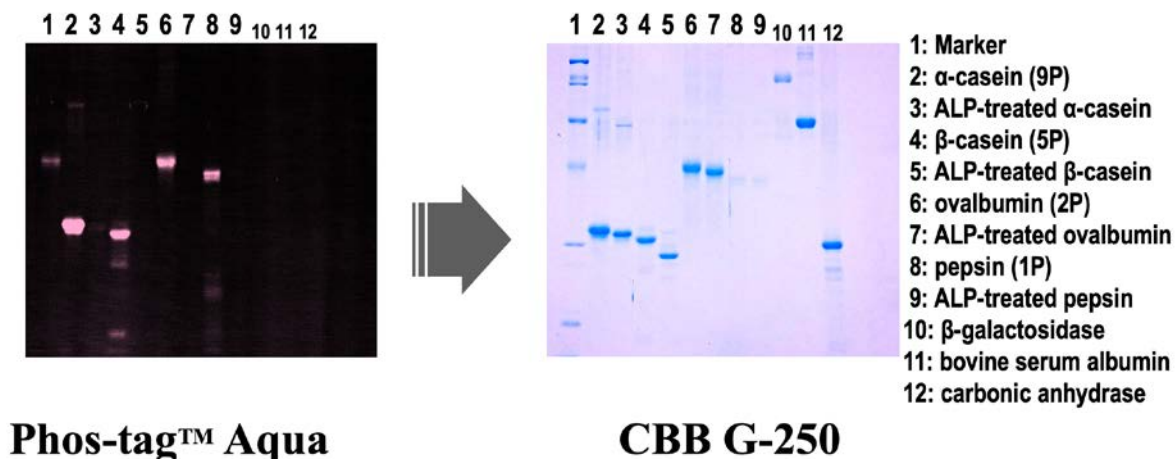


Figure 2. Selectivity of the Phos-tag™ Aqua stain: A 10% (w/v) polyacrylamide gel containing four sets of intact and ALP-treated phosphoproteins (1 μg each of α-casein, β-casein, ovalbumin, and pepsin) was stained with Phos-tag™ Aqua (left) and subsequently with CBB G-250 gel satin (right). The phosphoproteins were selectively visualized by using a fluorescence imaging scanner, FLA-5000 (Fujifilm Life Science) at 532-nm excitation with a 575-nm longpass emission filter.

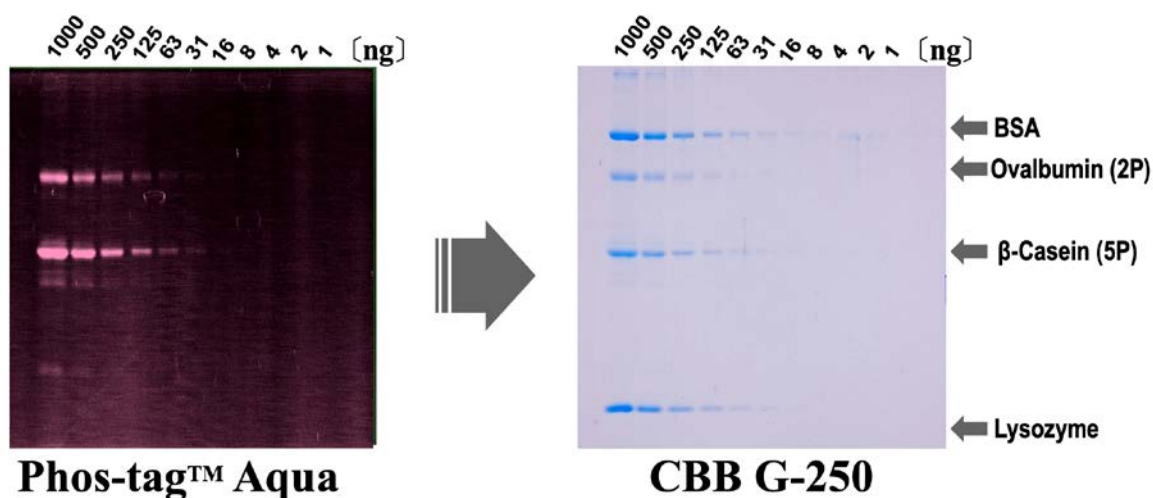


Figure 3. Selectivity of the Phos-tag™ Aqua stain: A 12.5% (w/v) polyacrylamide gel containing phosphorylated and nonphosphorylated proteins was stained with Phos-tag™ Aqua (left) and subsequently with CBB G-250 gel satin (right). The sample contained equivalent amounts of two pSer-phosphoproteins (ovalbumin and β-casein) and two nonphosphorylated proteins (bovine serum albumin [BSA] and lysozyme). The total amounts of protein are shown above each lane. The phosphoproteins were selectively visualized by using a fluorescence imaging scanner, FLA-5000 (Fujifilm Life Science) at 532-nm excitation with a 575-nm longpass emission filter.

Note: Phos-tag™ Aqua showed more selectivity to phosphorylated residues, but the detection limits for ovalbumin and β-casein were obviously less than those for Phos-tag™ Yellow, Magenta, and Cyan.

"Phos-tag" is a registered trademark of NARD Institute, Ltd.
Copyright © NARD Institute, Ltd. All rights reserved.



人と科学のステキな未来へ

コスモ・バイオ株式会社