

## Product Name

Monoclonal Mouse

Anti-PTPRR protein isoforms (PTPBR7, PTP-SL and PTPPBS $\gamma$ )  
clone 6A6

## CAT No.

MQ10.101-100

## Size

100  $\mu$ g

Edition 03.05.2007



**POSTAL ADDRESS** Schoutstraat 58  
6525 XV Nijmegen  
The Netherlands

**TELEPHONE** +31 (0) 24 – 361 42 53  
**MOBILE** +31 (0) 6–16 94 04 90  
**FAX** +31 (0) 24 – 350 21 54

**E-MAIL** [sales@modiquestresearch.com](mailto:sales@modiquestresearch.com)  
**WEBSITE** [www.modiquestresearch.com](http://www.modiquestresearch.com)

## Intended use

This product is for research use only. NOT for use in diagnostic or therapeutic procedures.

Mouse monoclonal to mouse PTPBR7, PTP-SL and PTPPBS $\gamma$ , is intended for use in immunoprecipitation (IP), immuno histochemistry (IHC), or immunoblotting.

## Reagent provided

The antibody has been lyophilized in a 10 mM ammonium bicarbonate buffer. Each vial contains 2 mg BSA.

## Isotype

IgG2a.

## Immunogen

Recombinant PTP-SL-GST (NCBI accession number BN000437, expression vector pGEX-2T), expressed in *E.coli*.

## Specificity

Specificity has been tested in IP, IHC and immunoblotting. Crossreacts with the striatum enriched phosphatase (STEP) when using antibody in immunoblotting. Additional tests for cross reactivity have not yet been performed.

## Purity

Protein A purified.

## Precautions

1. For professional users.
2. As with any product derived from biological sources, proper handling procedures should be used.
3. The Product may be used in different techniques and in combination with different sample types and materials, therefore each individual laboratory should validate the test system applied.

## Preparation of the antibody

Dissolve the antibody in a 100 mM Tris-HCl pH8.0 buffer, containing 0.05% sodium azide (NaN<sub>3</sub>).

Recommended antibody concentration: 0.5 mg/ml. When dissolved at 0.5 mg/ml, the BSA concentration will be 1%.

**NOTE:** Be careful opening the vial since the antibody resides in a vacuum.

## Storage instructions

Dissolve the antibody in and store at 2-8°C.

## Dilution guidelines

Optimum working dilutions of the product are not yet determined.

Unless the stability in the actual test system has been established, it is recommended to dilute the product immediately before use.

## Relevance

Protein tyrosine phosphatases (PTPs) are the enzymes that are instrumental in determining the spatial and temporal balance between the tyrosine phosphorylated and non-phosphorylated targets, and thus coordinately regulate these cellular responses to extracellular cues. The *Ptprr* gene gives rise to 4 different neuronal phosphatases which differ in length of their N-terminal part and subcellular localization. PTPBR7 (72 kDa) is receptor-like, PTP-SL (60 kDa) is membrane associated and PTPPBS $\gamma$  (42 and 37 kDa) is a cytosolic phosphatase. This antibody is directed to the common part of these proteins.

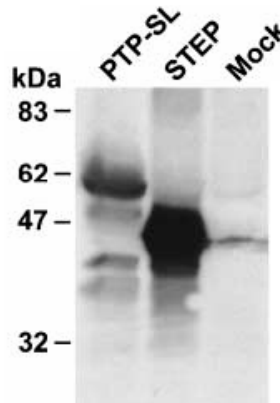


Figure 1: Neuro-2a cells were transiently transfected with PTP-SL or STEP expression plasmids, as indicated above the lanes. Mock transfected cells were included as negative controls. Lysates were directly subjected to Western blot analysis using monoclonal antibodies 6A6. In the PTP-SL lane: at 60 kDa PTP-SL, at 42 and 37 kDa two PTPPBS $\gamma$  isoforms.

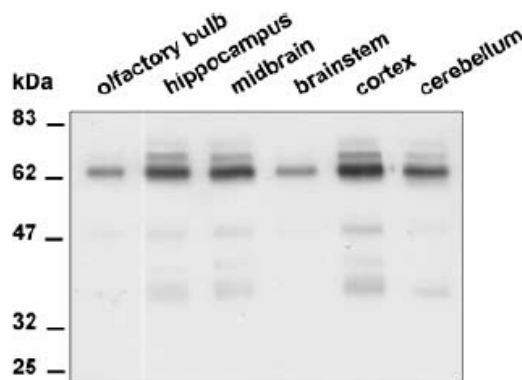


Figure 2: Monoclonal antibody 6A6 immunoprecipitates from different brain regions, visualized on blot using STEP absorbed  $\alpha$ -SL that is immunoreactive towards all PTPRR proteins.

**Product Name**

Monoclonal Mouse

Anti-PTPRR protein isoforms (PTPBR7, PTP-SL and PTPPBS $\gamma$ )  
clone 6A6

**CAT No.**

MQ10.101-100

**Size**

100  $\mu$ g



**POSTAL ADDRESS** Schoutstraat 58  
6525 XV Nijmegen  
The Netherlands

**TELEPHONE** +31 (0) 24 – 361 42 53  
**MOBILE** +31 (0) 6–16 94 04 90  
**FAX** +31 (0) 24 – 350 21 54

**E-MAIL** [sales@modiquestresearch.com](mailto:sales@modiquestresearch.com)  
**WEBSITE** [www.modiquestresearch.com](http://www.modiquestresearch.com)

Edition 03.05.2007

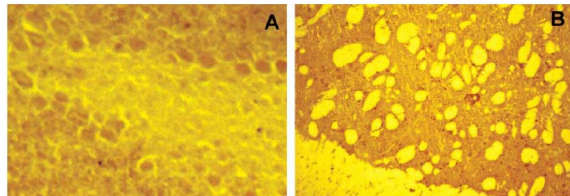


Figure 3: Immunolocalization of PTPRR protein in mouse brain. Brain cryosections were stained using a mixture of three different monoclonal antibodies (1E3, 3E11 and 6A6) immunoreactive towards the common part in PTPRR isoforms and that cross-react with STEP. Positive staining is observed in the Purkinje cells of the cerebellum (A), both the neurones and neuropil of the striatum (B). The staining of the striatum reflects STEP immunoreactivity.

**References**

- 1) Chirivi RGS et al. Characterization of multiple transcripts and isoforms derived from the mouse protein tyrosine phosphatase gene *Ptprr*. *Genes to Cells* 9, 919-933, 2004.