

INTRODUCTION

Keratocan belongs to the Small Leucine Rich Proteoglycan (SLRP) family. It was originally found to be a cornea specific keratan sulphate proteoglycan that, along with Lumican, plays a role in the development and maintenance of corneal transparency. Mutations of keratocan cause cornea plana in humans, which is often associated with glaucoma, whereas the absence of Lumican leads to formation of cloudy corneas. This suggests that Keratocan and Lumican have different roles in regulating the formation of stromal extracellular matrix.

CLONE

Ker-1

HOST

Mouse

ISOTYPE

IgM

PURITY

Affinity purified on thiophilic column

STORAGE BUFFER

PBS, no preservatives

FORM

Liquid, 1 mL/vial

CONCENTRATION

0.1 mg/mL

STORAGE

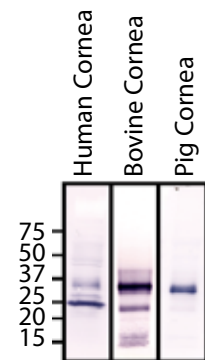
Store at -20°C. Avoid freeze/thaw cycles.

EXPIRATION

See vial Label

SPECIFICITY

This Keratocan antibody recognises a protein core epitope in human, bovine, porcine, mouse & chicken tissues.



Species Reactivity with Ker-1. Samples are treated with Keratanase and Keratanase II prior to electrophoresis.

For research use only.

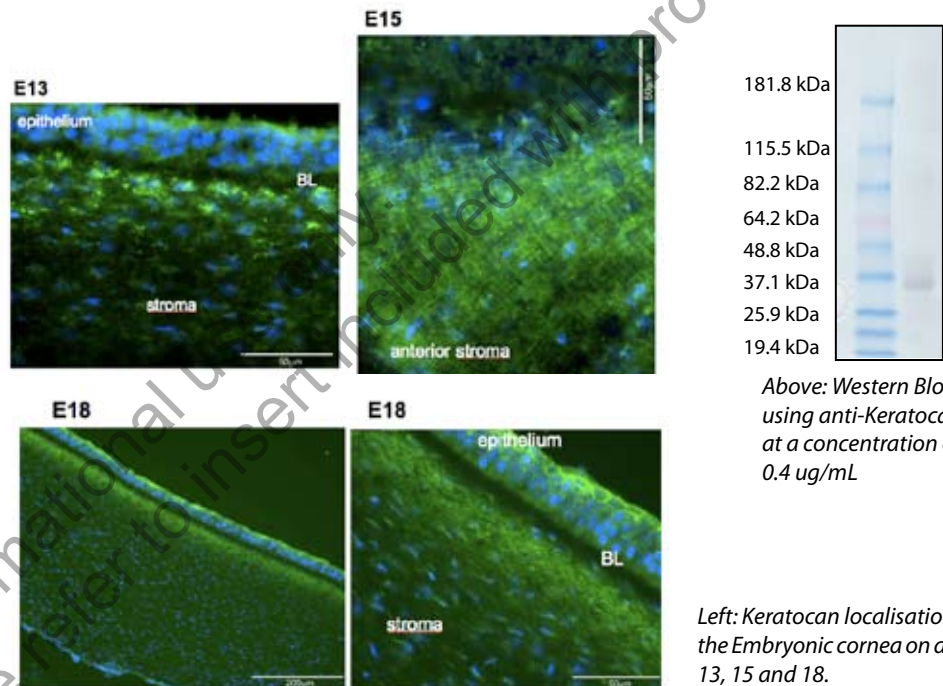
North America: 1-888-USMDBIO | International: +41-44 986 2628 | products@mdbiosciences.com | www.mdbioproducts.com



APPLICATION

- ELISA
- Western Blot: recommended dilution 0.4 µg/mL
- IHC

Note: This epitope is best recognized after keratanase and keratanase II treatment/digestion of section (IHC) or tissue extracts (for Western analyses). In some IHC tissue analyses, chondroitinase treatment may also be used as this second enzyme treatment facilitates antibody penetration into the tissue.



REFERENCES

1. Immunolocalisation and expression of keratocan in tendon. Rees SG, Waggett AD, Kerr BC, Probert J, Gealy EC, Dent CM, Caterson B, Hughes CE. (2008) **Osteoarthritis Cartilage**.
2. Fragmentation of decorin, biglycan, lumican and keratocan is elevated in degenerate human meniscus, knee and hip articular cartilages compared with age-matched macroscopically normal and control tissues. Melrose J, Fuller ES, Roughley PJ, Smith MM, Kerr B, Hughes CE, Caterson B, Little CB. (2008) **Arthritis Res Ther**. 10(4):R79.
3. Differential expression of the keratan sulphate proteoglycan, keratocan, during chick corneal embryogenesis. Gealy EC, Kerr BC, Young RD, Hayes AJ, Hughes CE, Caterson B, Quantock AJ, Ralphs JR. (2007) **Histochem Cell Biol**. Dec;128(6):551-5.

North America: 1-888-USMDBIO | International: +41-44 986 2628 | products@mdbiosciences.com | www.mdbioproducts.com

