

Certificate of Analysis



Product **NEWBORN CALF SERUM**
 Collected and Processed in USA
 Triple 0.1 um Sterile Filtered

COSIMO

☐ COSIMO BIO CO., LTD. コスモバイオ株式会社
 KOJ 12181650 ~~100~~ML
 500
 Newborn Calf Serum
 ALF13927

Lot #: ALF13927

Catalog #: SH30118

Expiration Date: June 2005

Test/(Method)	Specification	Units	Results
Endotoxin (Limulus Amebocyte Lysate-Gel Clot)	≤ 50	EU/ml	1
Hemoglobin (Spectrophotometric)	≤ 25	mg/dl	1
Sterility Testing Bacteria and Fungi (Current USP)	No Growth		No Growth
Virus Testing (9CFR 113.53) Fluorescent Antibody			
Bluetongue	Not Detected		Not Detected
Bovine Adenovirus	Not Detected		Not Detected
Bovine Parvovirus	Not Detected		Not Detected
Bovine Respiratory Syncytial Virus	Not Detected		Not Detected
Bovine Virus Diarrhea	Not Detected		Not Detected
Rabies	Not Detected		Not Detected
Reovirus	Not Detected		Not Detected
Cytopathogenic Agents -e.g. IBR	Not Detected		Not Detected
Hemadsorbing Agents -e.g. PI3	Not Detected		Not Detected
Mycoplasma (Large Volume, Direct Culture)	Not Detected		Not Detected
(Fluorescent Antibody)	Not Detected		Not Detected
(Hoechst DNA Stain)	Not Detected		Not Detected

This product was manufactured from Bovine Calf blood collected in USDA inspected abattoirs located in the United States. Collection and processing are done only by HyClone employees, or under special contract for HyClone Laboratories. This product has not come from cattle born, raised, shipped through, or slaughtered in countries where BSE is known to exist.



Jamalie Stephens

Quality Control Department

8974295

SS0175

Biochemical Assay



Product: Newborn Calf Serum
Collected and Processed in USA
Lot No.: ALF13927

Expiration Date: June 2005

Test		Lot Value
Gamma Globulin	% tp	12.4
Alkaline phosphatase	mU/ml	151
Lactate dehydrogenase	mU/ml	2992
Glutamic pyruvic transaminase (SGPT)	mU/ml	39
Glutamic Oxaloacetic Transaminase (SGOT)	mU/ml	69
pH		7.80
Total protein	gm%	5.5
Albumin	gm%	2.1
Blood urea nitrogen	mg/dl	14
Creatinine	mg/dl	1.2
Total Bilirubin	mg/dl	0.7
Sodium	meq/L	137
Potassium	meq/L	5.9
Calcium	mg/dl	9.4
Chloride	meq/L	99
Inorganic Phosphorus	mg/dl	7.5
Osmolality	mosm/kg	274
Iron	ug/dl	82
Total Iron Binding Capacity (TIBC)	ug/dl	518
Percent Saturation	%	16
Glucose	mg/dl	126
IgG - Nephelometer	mg/ml	8.2

1963385

Biochemical Assay

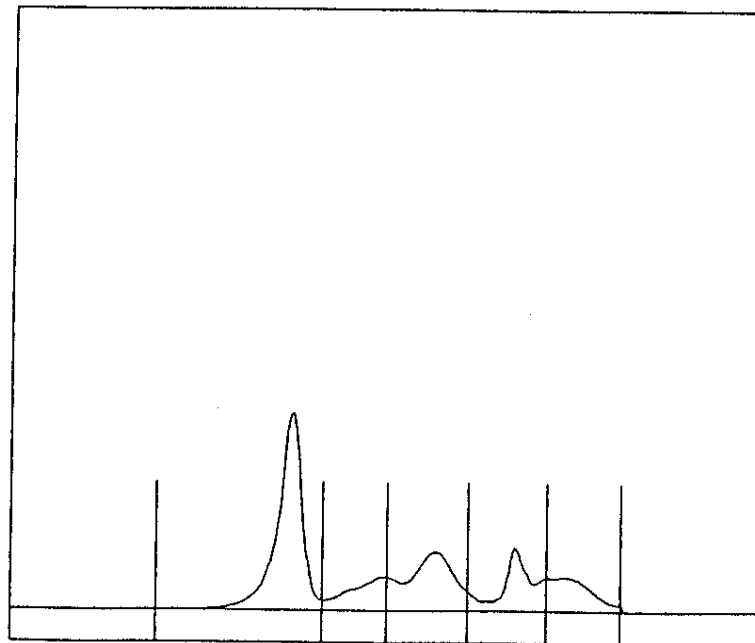


Electrophoretic Profile

Sample: Newborn Calf Serum

Lot: ALF13927 Total Protein: 5.5 g/dl

	% TP
ALBUMIN	39.7
ALPHA-1	9.9
ALPHA-2	22.9
BETA	15.1
GAMMA	12.4



1963385