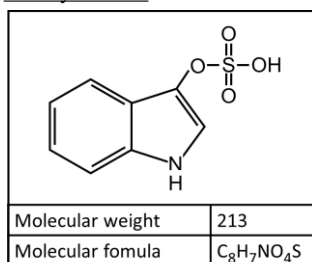


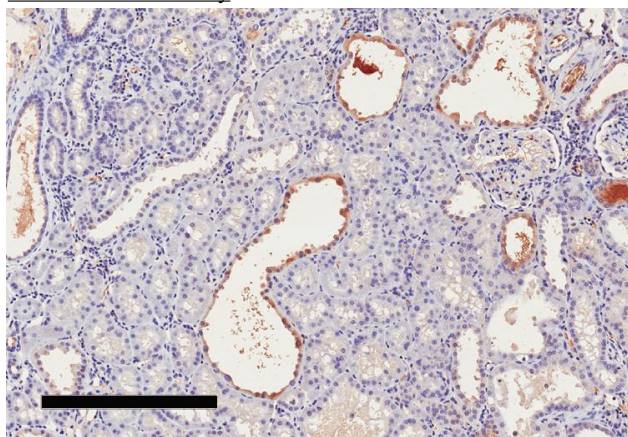
KO620 Anti Indoxyl Sulfate Monoclonal Antibody (Clone No.9A2F6)			
Primary Source	-	Gene ID	-
Type	Monoclonal antibody	Keyword	
Immunogen	Conjugated indoxyl sulfate	indoxyl sulfate, indican, uremic toxin	
Raised in	Mouse		
Myeloma	P3U1		
Clone Number	9A2F6		
Isotype	IgG2b		
Source	Serum-free medium	Application	
Purification Notes	ProteinG	WB	Not tested
Cross Reactivity	-	IHC	2.5 µg/mL
Concentration	0.25 mg/mL	ICC	Not tested
Contents (Volume)	25 µg (100 µL/vial)	ELISA	Not tested
Label	Unlabeled	FCM	Not tested
Buffer	PBS [containing 2% Block Ace as a stabilizer, 0.1% Proclin as a bacteriostat]	Neutralization	Not tested
Storage	Store below -20°C. Once thawed, store at 4°C. Repeated freeze-thaw cycles should be avoided.	IP	Not tested

Originally developed by Kureha

Indoxyl sulfate



Immunohistochemistry



Sample: CKD (5/6 nephrectomized), SD rat, kidney
Section: formalin-fixed, paraffin-embedded section
Primary antibody concentration: 2.5 µg/ml
Secondary antibody: HRP-conjugated anti-mouse IgG
Staining: DAB
Scale bar : 300 µm

Note

Indoxyl sulfate is produced in the liver from indole, which is one of metabolites produced by intestinal bacteria from dietary tryptophan and absorbed from the intestine.

Indoxyl sulfate is normally excreted in the urine from the kidney, but accumulates in the body in the situation of kidney dysfunction. Indoxyl sulfate is known to be associated with various uremic symptoms and recognized as one of uremic toxins.

Reference

1. Niwa T et al Indoxyl sulfate, a circulating uremic toxin, stimulates the progression of glomerular sclerosis. J Lab Clin Med 1994;124:96-104.
2. Adijiang A et al. Indoxyl sulphate promotes aortic calcification with expression of osteoblast-specific proteins in hypertensive rats. Nephrol Dial Transplant. 2008;23:1892-901.
3. Xue-Sen Cao et al Association of Indoxyl sulfate with heart failure among patients on hemodialysis CJASN, 2015; 10: 111-119.

WARNING AND PRECAUTION

1. Not for diagnostic use. The safety and efficacy of product in diagnostic or other clinical uses has not been established.
2. Harmful by inhalation, in contact with skin and if swallowed. Do not breathe dust. Avoid contact with skin and eyes.
3. If contact with skin and eyes, wash all affected areas with large volume of water. If inhaled remove to fresh air. In severe case obtain medical attention.
4. Wash hand thoroughly after handling the product.
5. Do not use this product if container is broken or some contaminants are detected.
6. When preserving the product, Close the container, ensure it does not fall aside or down.
7. Dispose of the container and expired reagents in accordance with federal, state and local government regulations.
8. Do not use the container and accessories of the product for other purpose.

取り扱い上の注意

この添付文書をよく読んでから使用して下さい。

1. 本品は、研究用試薬であり、医薬品その他の目的にはご使用になれません。
2. 取り扱い中は皮膚、粘膜、着衣に触れたり、目に入らないように適切な措置を行って下さい。
3. 誤って目や口に入った場合は、水で十分に洗い流すなどの応急処置を行い、必要があれば医師の 手当を 受けて下さい。
4. 取り扱い後は手洗いを十分に行ってください。
5. 容器の破損、異物混入等異常が認められた物は使用しないで下さい。
6. 試薬を保管する場合は、蓋をし、転倒落下防止を確実にし、指定の貯蔵方法で保管して下さい。
7. 使用後の容器は、廃棄物に関する規定に従って処理して下さい。
8. 容器、付属品等の他目的への転用は保証できません。