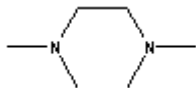


Catalog Number: 194019, 195516, 805613, 805614, 805615

## TEMED, electrophoresis grade

### Structure:



**Molecular Formula:** C<sub>6</sub>H<sub>16</sub>N<sub>2</sub>

**Molecular Weight:** 116.2

**CAS #:** 110-18-9

**Synonym:** N,N,N',N'-Tetramethylethylenediamine; TMEDA; 1,2-bis(Dimethylamino)ethane

**Physical Appearance:** Clear colorless to faint yellow liquid

**Density:** 0.77 ± 0.2 g/ml

**Solubility:** Easily soluble in water (20 gm/ml-clear-cololess solution)

**Description:** Catalyst for gel formation in polyacrylamide gel electrophoresis by catalyzing the formation of free radicals from ammonium persulfate or riboflavin. A tertiary amine base.

**Typical Use:** Suggested use is 6-10 ul for 10 ml acrylamide gel solution (the less amount of TEMED used, the slower the polymerization).

### Availability:

Catalog Number	Description	Size
805613	N,N,N',N'-Tetramethylethylenediamine,	5 ml
805614	Electrophoresis grade, purity not less	25 ml
805615	than 99%	50 ml
194019	N,N,N',N'-Tetramethylethylenediamine,	25 ml
	molecular biology reagent, purity	50 ml
	approximately 99%	100 ml
195516	N,N,N',N'-Tetramethylethylenediamine,	50 ml
	purity approximately 98%	100 ml
		500 ml

### References:

1. Andrews, A.T., Electrophoresis: Theory, Techniques, and Biochemical and Clinical Applications, **2nd Ed.**, New York, 21-24 (1988).
2. Ogden, R.C. and Adams, D.A., "Electrophoresis in agarose and acrylamide gels." *Meth. Enzymol.*, **v.152**, 61-87 (1987).



## Certificate of Analysis

**Product Description:** N,N,N',N'-Tetramethylethylenediamine, molecular biology reagent

**Catalog Number:** 194019

**Lot:** R20516

**Formula:** C<sub>6</sub>H<sub>16</sub>N<sub>2</sub>

**CAS #:** 110-18-9

**Physical Description:** Clear, Colorless Liquid

**Formula Weight:** 116.2

**Storage:** Room Temperature

Test	Specification	Result
Identity Test	Passes	Passes
Purity	~99%	99.7%
FTIR	Conforms to Standard	Conforms
pH (0.5% aq soln)	10 - 12	10.7
Moisture Content	≤2%	0.1

Refractive Index: 1.42

DMA Content: 0.15

APHA color:36

Chloride content: Non Detect

NaOH Content: Non Detect



2005/08/23 - Joseph Dietz, Ph.D.

MP Biomedicals, LLC.

Technical Director

This is an electronically generated document

<mailto:biotech@mpbio.com>

<http://www.mpbio.com>

Online Ordering, MSDSs, certificates of analysis and data sheets now available on our web site

Technical Service: 1-800-279-5490 (440-337-1200) Customer Service: 1-800-854-0530 (440-337-1200)