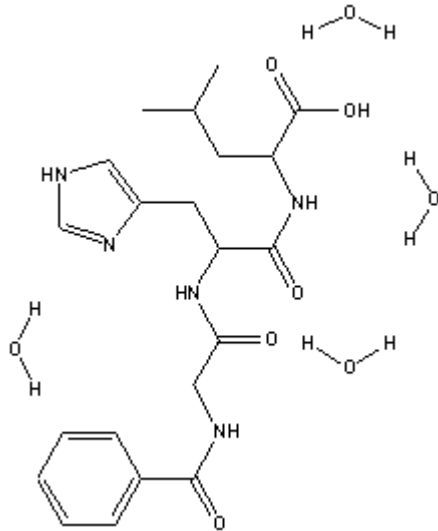




Catalog Number: 151262

Hippuryl-L-histidyl-L-leucine

Structure:



Molecular Formula: C₂₁H₂₇N₅O₅

Molecular Weight: 429.5 (anhyd)

CAS # : 31373-65-6

Synonym: Angiotensin-Converting enzyme substrate

Physical Appearance: White lyophilized powder

Description: Substrate for a spectrophotometric assay of angiotensin I-converting enzyme

Peptide Content: ~85%

Peptide Purity: ~99%

Solubility:

- The peptide is to be dissolved in distilled or preferably sterile water first. The concentration should be high enough to allow addition of buffer after the product is dissolved completely.
- If necessary dilute acetic acid or ammonium hydroxide, app. 1%, can be added to help solubilize the peptide. In those rare cases where solubilization is still not achieved, the solution may be sonicated briefly (up to 10 min, temperature shouldn't rise over 30-40°C; soluble in methanol (50 mg/ ml-clear, colorless solution)
- In order to avoid serious solubility problems, buffer or saline should be added **after** the peptide is fully in solution.
- For storage the pH range of the peptide solution is preferably in the range of 5.0 to 7.0 and should be in a freezer at -20°C.

Also soluble in methanol (50 mg/ ml-clear, colorless solution)

References:

1. Cushman, D.W. and Cheung, H.S., *Biochem. Pharmacol.*, **v.20**, 1637 (1971)
2. Hayakari, M. and Kondo, Y., *Tokoku J. Exp. Med.*, **v.122**, 313 (1977)
3. Conroy, J.M. and Lai, C.Y., *Anal. Biochem.*, **v.87**, 556 (1978)
4. Hayakari, M. et al., *Anal. Biochem.*, **v.84**, 361 (1978)
5. Hara, A. et al., *Biochem. Med.*, **v.26**, 199 (1981)
6. Rohrbach, M.S. et al., *J. Biol. Chem.*, **v.256**, 225 (1981)



7. Hurst,P.L. and Lovell-Smith, C.J., *Clin. Chem.*, **v.27**, 2048 (1981)
8. Stewart,T.A. et al., *Peptides*, **v.2**, 145 (1981)
9. Chevillard,C. and Saavedra,J.M., *Regul. Peptides*, **v.5**, 333 (1983)
10. Hayakari,M. et al., *Clin. Chim. Acta*, **v.144**, 71 (1984)
11. van der Linden, A.C. et al., *J. Clin. Chem. Clin. Biochem.*, **v.23**, 421 (1985)
12. Grobelny,D. and Galardy,R.E., *Biochemistry*, **v.25**, 1072 (1986)



Certificate of Analysis

Product Description: Hippuryl-L-histidyl-L-leucine
Catalog Number: 151262
Lot: 9528H

Formula: C ₂₁ H ₂₇ N ₅ O ₅ CAS #: 31373-65-6 Physical Description: White Powder	Formula Weight: 429.5 (anhyd) Storage: -0 ° C
--	--

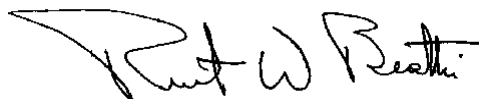
Test	Specification	Results
Identity Test	Passes	Passes
Peptide Purity	Report Result	>99%

Peptide Content: 90.92%

Gly: 0.95

Leu: 1.07

His: 0.98



2005/12/16 - Robert Beattie

MP Biochemicals, Inc.

Technical Director

This is an electronically generated document

<mailto:biotech@mpbio.com>

<http://www.mpbio.com>

Online Ordering, MSDSs, certificates of analysis and data sheets now available on our web site
 Technical Service: 1-800-279-5490 (440-337-1200) Customer Service: 1-800-854-0530 (440-337-1200)