

CD34 Antibody : B-C34 Unconjugate

HUMAN CLASS I CD34 UNCONJUGATE

CATALOGUE N° : 854.593.020

CLONE : B-C34

ISOTYPE : Mouse IgG1

IMMUNISATION : KG-1a and TF1 cell lines

HYBRIDOMA : Myeloma X63/AG.8653 x Balb/c spleen cells

SPECIFICITY : Recognises the Gp105-120 antigen, a 105-120 kDa protein

WORKSHOP : V

QUANTITY : 200 tests / 2 ml

PURIFICATION : Ion exchange chromatography

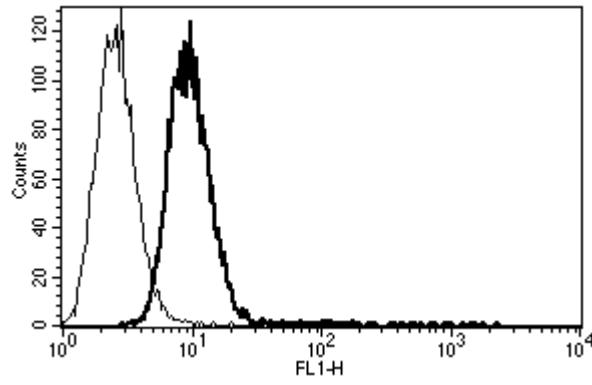
FORMAT : Phosphate-buffered saline with 1 % BSA and 0.1 % sodium azide

WORKING DILUTION : Use 10 µl to label 10⁶ cells or 100 µl of whole blood

STORAGE : Stable at +2-8°C for 12 months
For longer storage, freeze aliquots

APPLICATION : Suitable for flow cytometry
Immunoprecipitation : not tested
Western blot : not tested
Immunohistochemistry : not tested

REFERENCES : Jourdan P. et al., J. Immunol., 2000; 165 : 716 - 724



A typical staining pattern with the B-C34 monoclonal antibody of KG1a cell line

☛ *Sodium azide is a poisonous and hazardous substance, handle and dispose of properly*

Version 1 - 05.01

For research use only