

## CD34 Antibody : B-C34 FITC conjugated

HUMAN CLASS I CD34 FITC CONJUGATED

**CATALOGUE N° :** 854.591.010

**CLONE :** B-C34

**ISOTYPE :** Mouse IgG1

**IMMUNISATION :** KG-1a and TF1 cell lines

**HYBRIDOMA :** Myeloma X63/AG.8653 x Balb/c spleen cells

**SPECIFICITY :** Recognises the the Gp105-120 antigen, a 105-120 kDa protein

**WORKSHOP :** V

**QUANTITY :** 100 tests / 1 ml

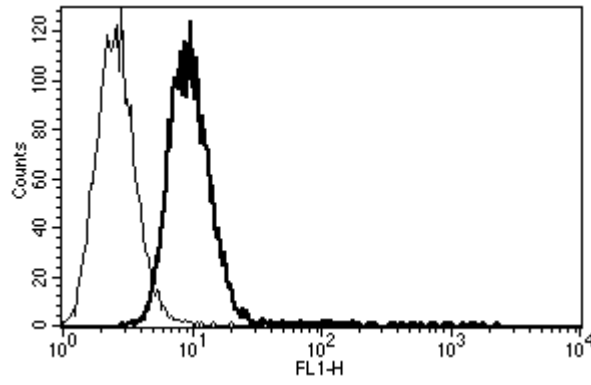
**PURIFICATION :** Ion exchange chromatography

**FORMAT :** Phosphate-buffered saline with 1 % BSA and 0.1 % sodium azide


**WORKING DILUTION :** Use 10 µl to label 10<sup>6</sup> cells or 100 µl of whole blood

**STORAGE :** Stable at +2-8°C for 12 months  
For longer storage, freeze aliquots

**APPLICATION :** Suitable for flow cytometry



*A typical staining pattern with the B-C34 monoclonal antibody of KG-1a cell line*

 *Sodium azide is a poisonous and hazardous substance, handle and dispose of properly*

**Version 1 - 05.01**

**For research use only**