

## CD117 Antibody : B-K15 PE conjugated

HUMAN CD117 PE CONJUGATED

**CATALOGUE N° :** 854.512.010

**CLONE :** B-K15

**ISOTYPE :** Mouse IgG1

**IMMUNISATION :** Recombinant c-Kit

**HYBRIDOMA :** Myeloma X63/AG.8653 x Balb/c spleen cells

**SPECIFICITY :** Recognises the Stem Cell Factor Receptor, SCF R, c-kit, a 145 kDa protein

**QUANTITY :** 100 tests

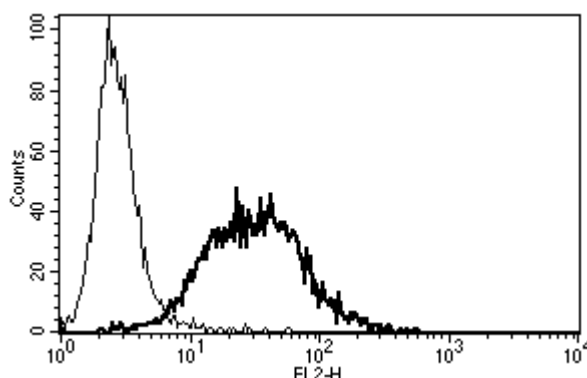
**PURIFICATION :** Ion exchange chromatography

**FORMAT :** Phosphate-buffered saline with 1% BSA and 0.1% sodium azide


**WORKING DILUTION :** Reconstitute with 1 ml deionised water  
Use 10 µl to label 10<sup>6</sup> cells or 100 µl of whole blood

**STORAGE :** Stable at +2-8°C for six months after reconstitution  
DO NOT FREEZE

**APPLICATION :** Suitable for flow cytometry



*A typical staining pattern with the B-K15 monoclonal antibody of TF1 cell line*

 Sodium azide is a poisonous and hazardous substance, handle and dispose of properly

Version 1 - 05.01

**For research use only**