

CD21 Antibody : B-E5 FITC conjugated

HUMAN CD21 FITC CONJUGATED

CATALOGUE N° : 854.161.010

CLONE : B-E5

ISOTYPE : Mouse IgG2a

IMMUNISATION : Daudi cell line

HYBRIDOMA : Myeloma X63/AG.8653 x Balb/c spleen cells

SPECIFICITY : Recognises the Epstein-Barr virus receptor (EBV R), CR2, C3d R, a 110 kDa protein

QUANTITY : 100 tests / 1 ml

PURIFICATION : Ion exchange chromatography

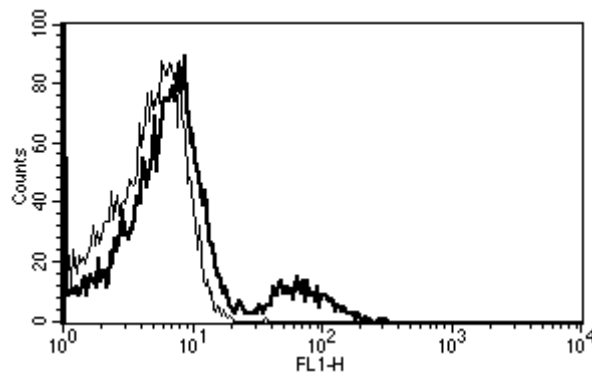
FORMAT : Phosphate-buffered saline with 5% BSA and 0.1 % sodium azide

WORKING DILUTION : Use 10 µl to label 10⁶ cells or 100 µl of whole blood

STORAGE : Stable at +2-8°C for 12 months
For longer storage, freeze aliquots

APPLICATION : Suitable for flow cytometry
Competes with the EBV virus for binding to the CD21 antigen

OTHER : Kd : 10 nM



A typical staining pattern with the B-E5 monoclonal antibody of lymphocytes

💣 Sodium azide is a poisonous and hazardous substance, handle and dispose of properly

Version 2 - 11.06

For research use only