

CD11a Antibody : B-B15 Unconjugate

HUMAN CD11a UNCONJUGATE

CATALOGUE N° : 852.513.020

CLONE : B-B15

ISOTYPE : Mouse IgG1

IMMUNISATION : Human PBL

HYBRIDOMA : Myeloma X63/AG.8653 x Balb/c spleen cells

SPECIFICITY : Recognises the α L integrin of LFA-1 complex, a 180 kDa protein

QUANTITY : 200 tests / 2 ml

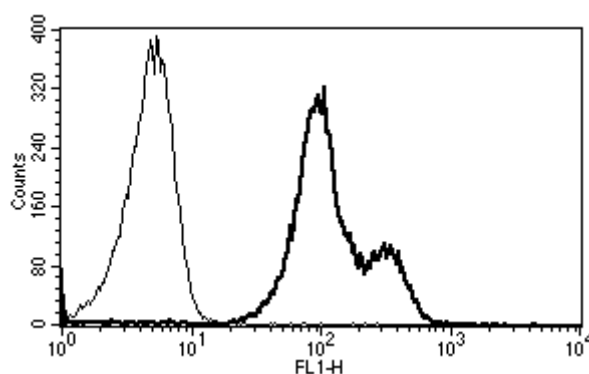
PURIFICATION : Ion exchange chromatography

FORMAT : Phosphate-buffered saline with 1 % BSA and 0.1 % sodium azide

WORKING DILUTION : Use 10 μ l to label 10^6 cells or 100 μ l of whole blood

STORAGE : Stable at +2-8°C for 12 months. For longer storage, freeze aliquots

APPLICATION : Suitable for flow cytometry
Immunoprecipitation : not tested
Western blot : not tested
Immunohistochemistry : not tested



A typical staining pattern with the B-B15 monoclonal antibody of lymphocytes

 Sodium azide is a poisonous and hazardous substance, handle and dispose of properly

Version 2 – 02.09

For research use only