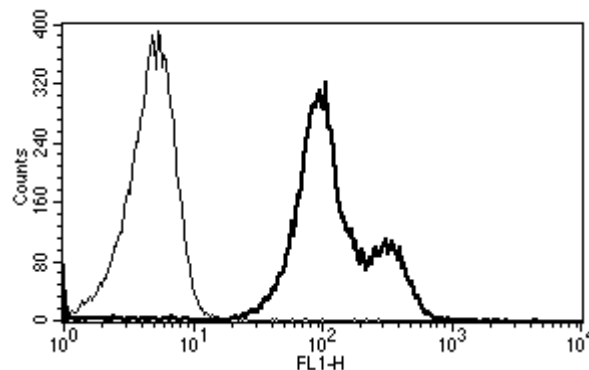


CD11a Antibody : B-B15 Azide free

HUMAN CD11a AZIDE FREE

CATALOGUE N° :	852.510.000
CLONE :	B-B15
ISOTYPE :	Mouse IgG1
IMMUNISATION :	Human PBL
HYBRIDOMA :	Myeloma X63/AG.8653 x Balb/c spleen cells
SPECIFICITY :	Recognises the α L integrin of LFA-1 complex, a 180 kDa protein
QUANTITY :	200 μ g / 200 μ l
PURIFICATION :	Ion exchange chromatography
FORMAT :	Phosphate-buffered saline. Sterile-filtered through 0.22 μ m and treated to remove endotoxins. Carrier and preservative free
STORAGE :	Stable at +2-8°C for 12 months For longer storage, freeze aliquots
APPLICATION :	Suitable for flow cytometry Biological activity : not tested Immunoprecipitation : not tested Western blot : not tested Immunohistochemistry : not tested
REFERENCES :	Tsuji T. et al., Blood, 1998; 91 : 1263 - 1271 Vermot-Desroches C. et al, Eur. J. Immunol. 1995; 25 : 2460-2464 Vermot-Desroches C. et al, Immunology Letters, 1995; 48 : 1-9



A typical staining pattern with the B-B15 monoclonal antibody of lymphocytes