

Inhibitor

For research use only. Not for clinical diagnosis.

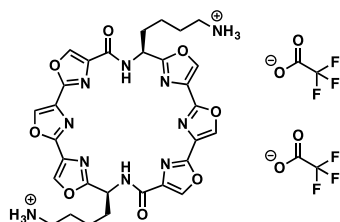
Catalog No. TAT-003

L2H2-6OTD

Background

L2H2-6OTD is a Telomestatin derivative, which induces and stabilizes G-quadruplexes. L2H2-6OTD inhibits human telomerase by binding to G-quadruplex DNA. May also be useful as an antiproliferative agent.

Chemical structure



Synonym	L2H2-6OTD
Molecular Formula	C ₃₄ H ₃₂ F ₆ N ₁₀ O ₁₂
Molecular Weight	886.68
Form	white solid
Solubility*	Soluble in methanol or DMSO. Slightly soluble in water.
Purity	>95% by NMR
Size	1mg
Storage	-20 °C

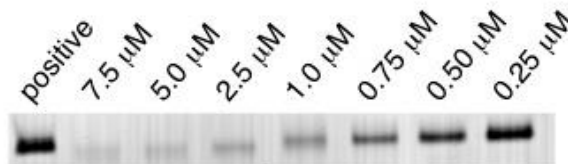


Figure 1. PCR inhibitory activity by L2H2-6OTD

Figure 1 shows PCR inhibitory activity of L2H2-6OTD by the use of primer of telomere DNA sequence. IC₅₀ value for L2H2-6OTD was found to be 0.7 μM.

References

M. Tera, H. Ishizuka, M. Takagi, M. Suganuma, K. Shin-ya, K. Nagasawa, "Macrocyclic hexaoxazoles as sequence- and mode-selective G-quadruplex binders", *Angew. Chem. Int. Ed.*, **2008**, *47*, 5557-5560.

For research use only. Not for clinical diagnosis.



COSMO BIO CO., LTD.

Inspiration for Life Science

TOYO 2CHOME, KOTO-KU, TOKYO, 135-0016, JAPAN

URL: <http://www.cosmobio.co.jp>

e-mail: export@cosmobio.co.jp

[Outside Japan] Phone : +81-3-5632-9617

[国内連絡先] Phone : +81-3-5632-9610

FAX : +81-3-5632-9618

FAX : +81-3-5632-9619