



D-Eritadenine (naturally-occurring compound)

BACKGROUND

D-Eritadenine isolated from shiitake mushrooms, known as a potent inhibitor of S-adenosyl-L-homocysteine hydrolase. D-Eritadenine reducing total cholesterol levels in plasma.

CAS number 23918-98-1

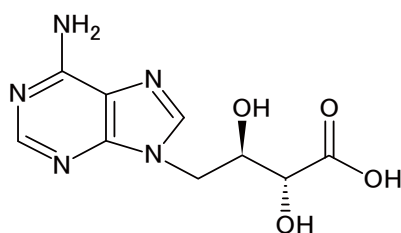
Quantity 10mg

Purity $\geq 98.0\%$

Origine Shiitake (*Lentinula edodes*)

Synonyms Lentinine, Lentinacin, (2R,3R)-4-(6-Amino-9H-purin-9-yl)-2,3-dihydroxybutanoic acid

Chemical structure



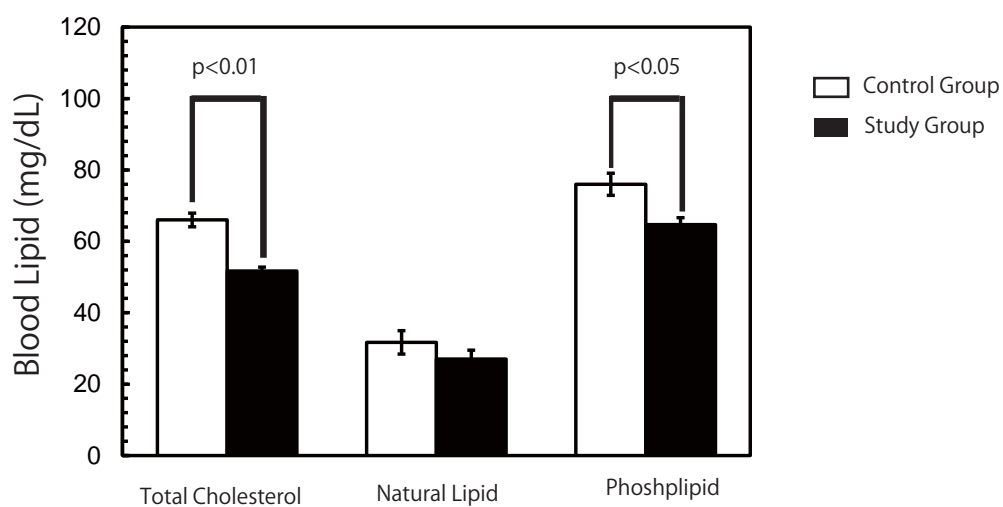
Formula $C_9H_{11}N_5O_4$

Molecular Weight 253.2

Solubility Soluble in water

Storage -20°C

Animal testing data



Blood Lipid at autopsy

Test Animal : 5- week-old male Slc:SD Rat (n=6 / Group)

Control Group : Fedeed hypercholesterolemic diet containing 1% Cholesterol and 0.5% Cholic acid.

Study Group : Fedeed above hypercholesterolemic diet with addition of D-eritadenine (20mg / kg)

For research use only, Not for diagnostic use.



COSMO BIO Co., LTD.

2-20, Toyo 2-Chome, Koto-ku, Tokyo 135-0016, JAPAN

T: +81-3-5632-9617

日本のお客様

F: +81-3-5632-9618

T: 03-5632-9610

E: export@cosmobio.co.jp

F: 03-5632-9619

W: www.cosmobio.com

W: www.cosmobio.co.jp