

PROTAMINE SULFATE COATED ELISA PLATE

Catalog No. NM-MA-P003

This product is a Protamine sulfate coated ELISA 96-well plate. Protamine sulfate is a highly positively charged protein that binds to negatively charged DNA. These plates are ideal for improving the accuracy and reproducibility of any plate-based assay where DNA is bound to the solid phase, such as those for DNA damage detection.

Specifications

Catalog No.	Description	Quantity
NM-MA-P003	PROTAMINE SULFATE COATED ELISA PLATE 96 x 10 (96 well x 10 plates)	10 plates

Product Information

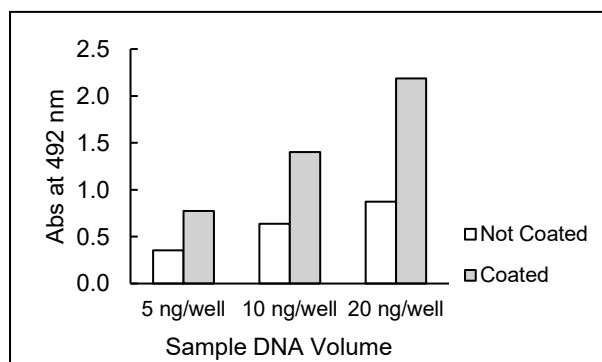
- High DNA binding capacity DNA: native and denatured; damaged or undamaged.
- Steady binding of a small amount of DNA consistent.
- After DNA binding, plates should be used within one week.

Example of method

- 1) Add 50 μ L of DNA solution (sample or control) in PBS to each well. Evaporate plates to dryness (overnight, 37 $^{\circ}$ C).
- 2) Wash each well 5 times with 150 μ L of Wash Buffer.
- 3) After blocking the each well, apply primary antibody and detect appropriately.

- * These plates work well in DNA damage detection ELISAs using the following antibodies available from Cosmo Bio:
Anti-CPDs (Cat No. CAC-NM-DND-001)
Anti-6-4PPs (Cat No. CAC-NM-DND-002)
Anti-DewarPPs (Cat No. CAC-NM-DND-003).
- * Optimal sample volume/concentration should be determined by user.

Results



Protamine Sulfate coating increases DNA binding capacity.

UV-irradiated DNA solution (5-20 ng) was added to wells uncoated or coated with protamine sulfate followed by incubation with anti-CPDs monoclonal antibody (Cat No. CAC-NM-DND-001). Detection signals from bound antibody in coated wells was up to 60% stronger than in un-coated wells.

Notes

- (1) Protect from the light.
- (2) Store at room temperature in the dark.
- (3) The unopened product is stable for 2 years from the shipping date.

For research use only, Not for diagnostic use.



COSMO BIO Co., LTD.

【JAPAN】

TOYO EKIMAE BLDG. 2-20, TOYO 2-CHOME,
KOTO-KU. TOKYO 135-0016, JAPAN
Phone: +81-3-5632-9610
FAX: +81-3-5632-9619
URL: <https://www.cosmobio.co.jp/>



COSMO BIO USA

【Outside Japan】

2792 Loker Ave West, Suite 101
Carlsbad, CA 92010, USA
email: info@cosmobiousa.com
Phone/FAX: (+1) 760-431-4600
URL: www.cosmobiousa.com