



Anti PEPC

Background

PEPC (sll0920) is a phosphoenolpyruvate carboxylase [EC 4.1.1.31] in a unicellular cyanobacterium *Synechocystis* sp. PCC 6803. PEPC catalyzes a reaction generating oxaloacetate from phosphoenolpyruvate and HCO_3^- . Oxaloacetate generated by PEPC is a substrate of l-malate dehydrogenase or citrate synthase in the TCA cycle.

Product type	Primary Antibody
Immunogen	Synthetic peptide (CELQISSRPARRKGGKADLS)
Raised in	Rabbit
Source	Serum
Purification	Immunogen affinity purified
Buffer	Phosphate Buffered Saline (PBS) with 50 % glycerol and ProClin 300 (15 ppm)
Concentration	0.35 mg/mL
Volume	100 uL
Label	Unlabeled
Specificity	<i>Synechocystis</i> sp. PCC 6803 PEPC
Storage	Store at -20 °C
Recommended Dilutions	Western blotting (1 : 1000) Other applications have not been tested or not reactive. Optimal dilutions/concentrations should be determined by the end user.

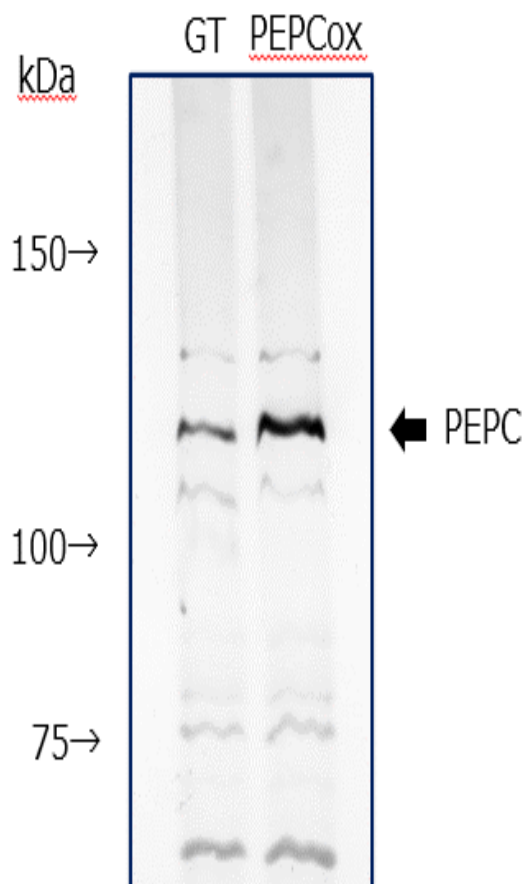


Fig 16. Western blot analysis of PEPC in glucose-tolerant strain of *Synechocystis* sp. PCC 6803 (GT) and in PEPC overexpressing strain (PEPCox)
 Predicted molecular weight : 118.9 kDa
 Primary antibody : anti PEPC antibody at 1:1000 dilution
 Secondary antibody : Alkaline phosphatase conjugated anti rabbit IgG antibody at 1:20000 dilution

For research use only, Not for diagnostic use.



COSMO BIO CO., LTD.

【JAPAN】
 TOYO EKIMAE BLDG. 2-20, TOYO 2-CHOME,
 KOTO-KU, TOKYO 135-0016, JAPAN
 Phone: +81-3-5632-9610
 FAX: +81-3-5632-9619
 URL: <https://www.cosmobio.co.jp/>



COSMO BIO USA

【Outside Japan】
 2792 Loker Ave West, Suite 101
 Carlsbad, CA 92010, USA
 email: info@cosmobioussa.com
 Phone/FAX: (+1) 760-431-4600
 URL: www.cosmobioussa.com