



Anti RbcL

Background

RbcL (slr0009) is a large subunit of a ribulose-1,5-bisphosphate carboxylase/oxygenase (RubisCO) [EC 4.1.1.39] in a unicellular *Synechocystis* sp. PCC 6803. RubisCO catalyzes the reaction from ribulose-5-phosphate and CO₂ to two 3-phosphoglycerates (a carboxylase reaction).

Product type	Primary Antibody
Immunogen	Synthetic peptide (CVQARNEGRNLAREGNDVIR)
Raised in	Rabbit
Source	Serum
Purification	Immunogen affinity purified
Buffer	Phosphate Buffered Saline (PBS) with 50 % glycerol and ProClin 300 (15 ppm)
Concentration	1.79 mg/mL
Volume	100 uL
Label	Unlabeled
Specificity	<i>Synechocystis</i> sp. PCC 6803 RbcL
Storage	Store at -20 °C
Recommended Dilutions	Western blotting (1 : 20000) Other applications have not been tested or not reactive. Optimal dilutions/concentrations should be determined by the end user.

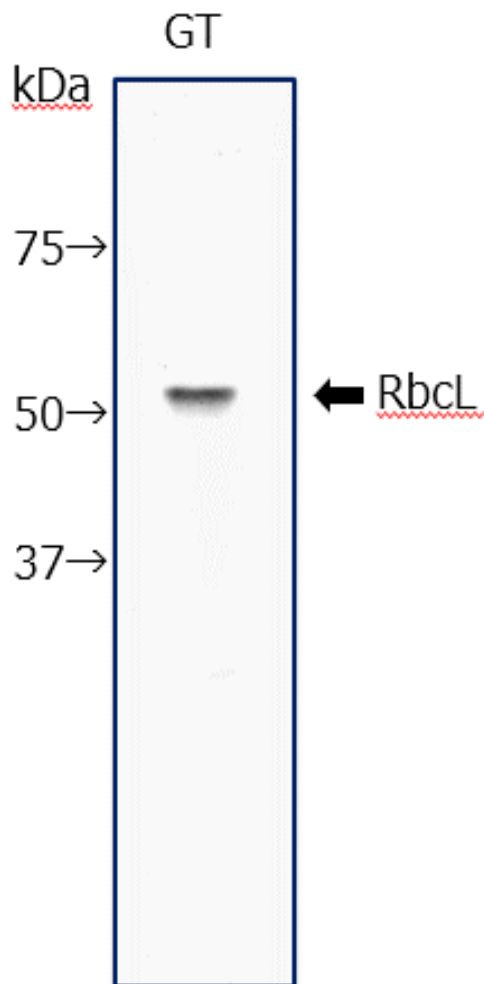


Fig 14. Western blot analysis of RbcL in glucose-tolerant strain of *Synechocystis* sp. PCC 6803 (GT)

Predicted molecular weight : 52.5 kDa

Primary antibody : anti RbcL antibody at 1:20000 dilution

Secondary antibody : Alkaline phosphatase conjugated anti rabbit IgG antibody at 1:20000 dilution

For research use only, Not for diagnostic use.



COSMO BIO CO., LTD.

【JAPAN】

TOYO EKIMAE BLDG. 2-20, TOYO 2-CHOME,
KOTO-KU, TOKYO 135-0016, JAPAN
Phone: +81-3-5632-9610
FAX: +81-3-5632-9619
URL: <https://www.cosmobio.co.jp/>



COSMO BIO USA

【Outside Japan】

2792 Loker Ave West, Suite 101
Carlsbad, CA 92010, USA
email: info@cosmobiousa.com
Phone/FAX: (+1) 760-431-4600
URL: www.cosmobiousa.com