



# Anti GlgA

## Background

GlgA (slI0945) is a glycogen synthase [EC 2.4.1.21] in a unicellular cyanobacterium *Synechocystis* sp. PCC 6803. GlgA catalyze a reaction converting ADP-glucose to amylose for glycogen synthesis.

---

|                       |   |
|-----------------------|---|
| Product type          | Primary Antibody  |
| Immunogen             | Synthetic peptide (CPAFDSRRRIYGGDDEAWR)   |
| Raised in             | Rabbit  |
| Source                | Serum   |
| Purification          | Immunogen affinity purified   |
| Buffer                | Phosphate Buffered Saline (PBS) with 50 % glycerol and ProClin 300 (15 ppm)   |
| Concentration         | 2.88 mg/mL  |
| Volume                | 100 uL  |
| Label                 | Unlabeled   |
| Specificity           | <i>Synechocystis</i> sp. PCC 6803 GlgA  |
| Storage               | Store at -20 °C   |
| Recommended Dilutions | Western blotting (1 : 4000)<br>Other applications have not been tested or not reactive.<br>Optimal dilutions/concentrations should be determined by the end user. |

---

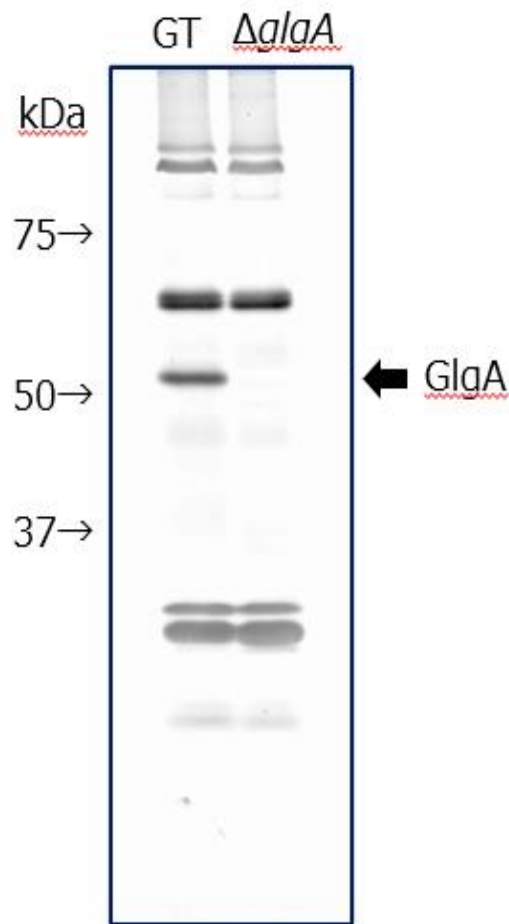


Fig 12. Western blot analysis of GlgA in glucose-tolerant strain of *Synechocystis* sp. PCC 6803 (GT) and in *glgA* deletion mutant ( $\Delta$ GlgA)  
 Predicted molecular weight : 54.3 kDa  
 Primary antibody : anti GlgA antibody at 1:4000 dilution  
 Secondary antibody : Alkaline phosphatase conjugated anti rabbit IgG antibody at 1:20000 dilution

For research use only, Not for diagnostic use.



**COSMO BIO CO., LTD.**

【JAPAN】  
 TOYO EKIMAE BLDG. 2-20, TOYO 2-CHOME,  
 KOTO-KU, TOKYO 135-0016, JAPAN  
 Phone: +81-3-5632-9610  
 FAX: +81-3-5632-9619  
 URL: <https://www.cosmobio.co.jp/>



**COSMO BIO USA**

【Outside Japan】  
 2792 Loker Ave West, Suite 101  
 Carlsbad, CA 92010, USA  
 email: [info@cosmobiousa.com](mailto:info@cosmobiousa.com)  
 Phone/FAX: (+1) 760-431-4600  
 URL: [www.cosmobiousa.com](http://www.cosmobiousa.com)