



Anti CpcG2

Background

CpcG2 (slI1471) is a phycobilisome rod-core linker protein in a unicellular cyanobacterium *Synechocystis* sp. PCC 6803. *Synechocystis* possesses two rod-core linker proteins, CpcG1 and CpcG2, and cpcG2 is not essential for the cell viability. CpcG2 is a phycobilisome rod-core linker protein.

Product type	Primary Antibody
Immunogen	Synthetic peptide (CQRVTNYESGDEH)
Raised in	Rabbit
Source	Serum
Purification	Immunogen affinity purified
Buffer	Phosphate Buffered Saline (PBS) with 50 % glycerol and ProClin 300 (15 ppm)
Concentration	3.32 mg/mL
Volume	100 uL
Label	Unlabeled
Specificity	<i>Synechocystis</i> sp. PCC 6803 CpcG2
Storage	Store at -20 °C
Recommended Dilutions	Western blotting (1 : 4000) Other applications have not been tested or not reactive. Optimal dilutions/concentrations should be determined by the end user.

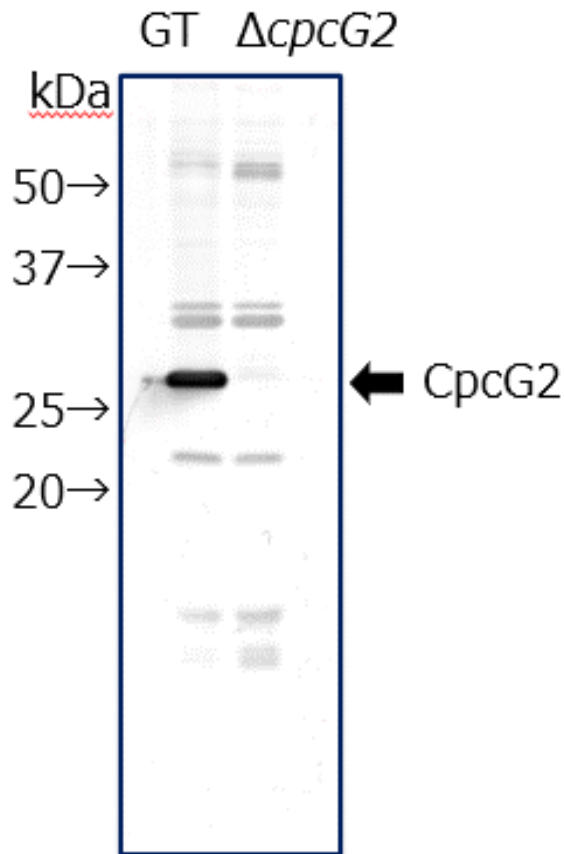


Fig 11. Western blot analysis of CpcG2 in glucose-tolerant strain of *Synechocystis* sp. PCC 6803 (GT) and in *cpcG2* deletion mutant ($\Delta cpcG2$)

Predicted molecular weight : 28.5 kDa

Primary antibody : anti CpcG2 antibody at 1:4000 dilution

Secondary antibody : Alkaline phosphatase conjugated anti rabbit IgG antibody at 1:20000 dilution

For research use only, Not for diagnostic use.



COSMO BIO CO., LTD.

【JAPAN】

TOYO EKIMAE BLDG. 2-20, TOYO 2-CHOME,
KOTO-KU, TOKYO 135-0016, JAPAN
Phone: +81-3-5632-9610
FAX: +81-3-5632-9619
URL: <https://www.cosmobio.co.jp/>



COSMO BIO USA

【Outside Japan】

2792 Loker Ave West, Suite 101
Carlsbad, CA 92010, USA
email: info@cosmobiousa.com
Phone/FAX: (+1) 760-431-4600
URL: www.cosmobiousa.com