



Anti transaldolase (Tal)

Background

Tal is a transaldolase, catalyzing a reaction; sedoheptulose-7-phosphate + glyceraldehyde-3-phosphate and erythrose-4-phosphate + fructose-6-phosphate [EC2.2.1.2]. Transaldolase is an enzyme of the oxidative pentose phosphate pathway, and whose expression is controlled by a global regulator for sugar catabolism SigE in *Synechocystis* sp. PCC 6803.

Product type	Primary Antibody
Immunogen	Synthetic peptide (YKKSTGKEYDSHEDPGV)
Raised in	Rabbit
Source	Serum
Purification	Immunogen affinity purified
Buffer	Phosphate Buffered Saline (PBS) with 50 % glycerol and ProClin 300 (15 ppm)
Concentration	1.19 mg/mL
Volume	100 uL
Label	Unlabeled
Specificity	<i>Synechocystis</i> sp. PCC 6803 Tal
Storage	Store at -20 °C
Recommended Dilutions	Western blotting (1 : 4000) Other applications have not been tested or not reactive. Optimal dilutions/concentrations should be determined by the end user.

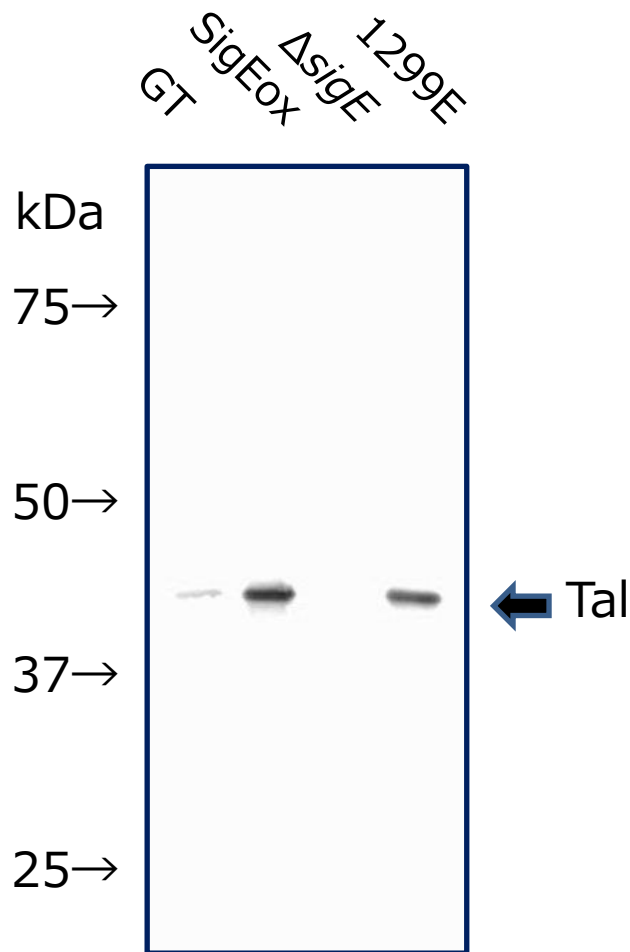


Fig 1. Western blot analysis of Tal in glucose-tolerant strain of *Synechocystis* sp. PCC 6803 (GT), in *sigE* overexpressing strain (SigEox), in *sigE* deletion mutant (Δ sigE), and, in *sigE* overexpressing and *ackA* deletion strain (1299E)
 Predicted molecular weight : 43.1 kDa
 Primary antibody : anti Tal antibody at 1:4000 dilution
 Secondary antibody : Alkaline phosphatase conjugated anti rabbit IgG antibody at 1:20000 dilution

For research use only, Not for diagnostic use.



COSMO BIO CO., LTD.

【JAPAN】
 TOYO EKIMAE BLDG. 2-20, TOYO 2-CHOME,
 KOTO-KU, TOKYO 135-0016, JAPAN
 Phone: +81-3-5632-9610
 FAX: +81-3-5632-9619
 URL: <https://www.cosmobio.co.jp/>



COSMO BIO USA

【Outside Japan】
 2792 Loker Ave West, Suite 101
 Carlsbad, CA 92010, USA
 email: info@cosmobiousa.com
 Phone/FAX: (+1) 760-431-4600
 URL: www.cosmobiousa.com