



Anti sensory transduction histidine kinase two-component system (Hik8)

Background

Hik8 is a histidine kinase in *Synechocystis* sp. PCC 6803, homologous to SasA protein involved in circadian rhythms in another cyanobacterium. *Synechocystis* Hik8 plays roles in sugar and amino acid metabolisms and photosynthesis.

Product type	Primary Antibody
Immunogen	Synthetic peptide (CWQQELAMDPNPEDTGQSPS)
Raised in	Rabbit
Source	Serum
Purification	Immunogen affinity purified
Buffer	Phosphate Buffered Saline (PBS) with 50 % glycerol and ProClin 300 (15 ppm)
Concentration	1.01 mg/mL
Volume	100 uL
Label	Unlabeled
Specificity	<i>Synechocystis</i> sp. PCC 6803 Hik8
Storage	Store at -20 °C
Recommended Dilutions	Western blotting (1 : 4000) Other applications have not been tested or not reactive. Optimal dilutions/concentrations should be determined by the end user.

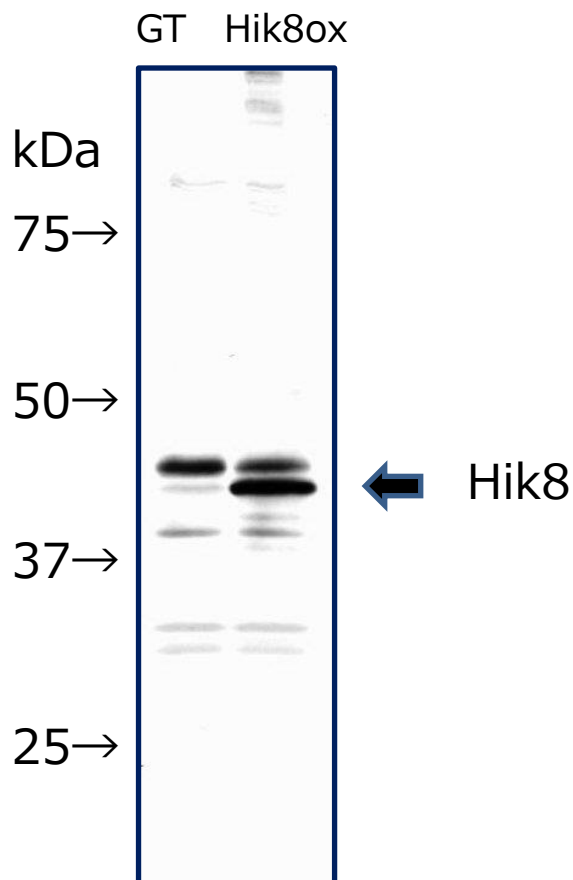


Fig 1. Western blot analysis of Hik8 in glucose-tolerant strain of *Synechocystis* sp. PCC 6803 (GT) and in *hik8* overexpressing strain (Hik8ox)
 Predicted molecular weight : 43.4 kDa
 Primary antibody : anti Hik8 antibody at 1:4000 dilution
 Secondary antibody : Alkaline phosphatase conjugated anti rabbit IgG antibody at 1:20000 dilution

For research use only, Not for diagnostic use.



COSMO BIO CO., LTD.

【JAPAN】
 TOYO EKIMAE BLDG. 2-20, TOYO 2-CHOME,
 KOTO-KU, TOKYO 135-0016, JAPAN
 Phone: +81-3-5632-9610
 FAX: +81-3-5632-9619
 URL: <https://www.cosmobio.co.jp/>



COSMO BIO USA

【Outside Japan】
 2792 Loker Ave West, Suite 101
 Carlsbad, CA 92010, USA
 email: info@cosmobiousa.com
 Phone/FAX: (+1) 760-431-4600
 URL: www.cosmobiousa.com