



# Anti D-lactate dehydrogenase (Ddh)

## Background

Ddh is a D-lactate dehydrogenase (2-hydroxyaciddehydrogenase), catalyzing a reaction converting pyruvate to D-lactate [EC:1.1.1.28]. Ddh of a unicellular cyanobacterium *Synechocystis* sp. PCC 6803 specifically produces D-lactate from pyruvate. D-lactate are excreted from *Synechocystis* sp. PCC 6803 cell cultivated under dark, anaerobic conditions (fermentation). D-lactate is a promising chemicals used for various products such as bioplastics.

---

Product type	Primary Antibody
Immunogen	Synthetic peptide (CELFFTDHSDTIIQDD)
Raised in	Rabbit
Source	Serum
Purification	Immunogen affinity purified
Buffer	Phosphate Buffered Saline (PBS) with 50 % glycerol and ProClin 300 (15 ppm)
Concentration	2.04 mg/mL
Volume	100 uL
Label	Unlabeled
Specificity	<i>Synechocystis</i> sp. PCC 6803 Ddh
Storage	Store at -20 °C
Recommended Dilutions	Western blotting (1 : 4000) Other applications have not been tested or not reactive. Optimal dilutions/concentrations should be determined by the end user.

---

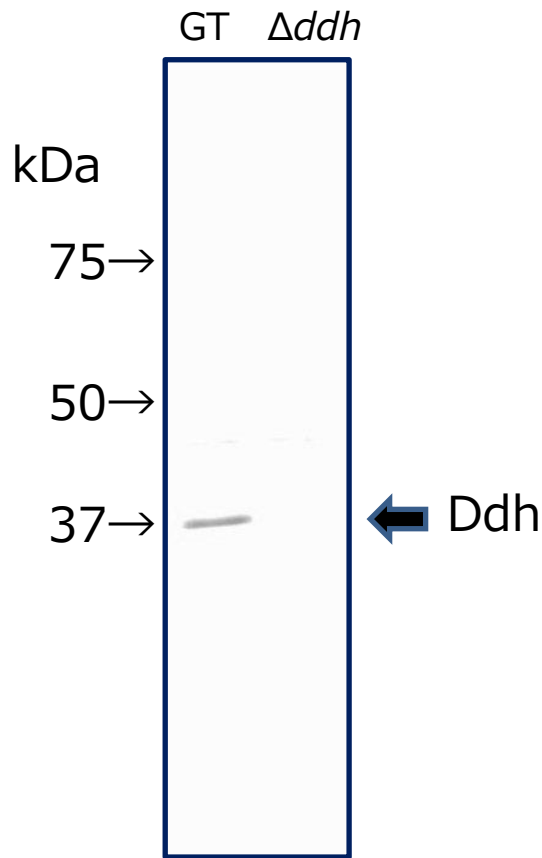


Fig 1. Western blot analysis of Ddh in glucose-tolerant strain of *Synechocystis* sp. PCC 6803 (GT) and in *ddh* deletion mutant ( $\Delta ddh$ )

Predicted molecular weight : 36.9 kDa

Primary antibody : anti Ddh antibody at 1:4000 dilution

Secondary antibody : Alkaline phosphatase conjugated anti rabbit IgG antibody at 1:20000 dilution

For research use only, Not for diagnostic use.



**COSMO BIO CO., LTD.**

【JAPAN】

TOYO EKIMAE BLDG. 2-20, TOYO 2-CHOME,  
KOTO-KU, TOKYO 135-0016, JAPAN  
Phone: +81-3-5632-9610  
FAX: +81-3-5632-9619  
URL: <https://www.cosmobio.co.jp/>



**COSMO BIO USA**

【Outside Japan】

2792 Loker Ave West, Suite 101  
Carlsbad, CA 92010, USA  
email: [info@cosmobiousa.com](mailto:info@cosmobiousa.com)  
Phone/FAX: (+1) 760-431-4600  
URL: [www.cosmobiousa.com](http://www.cosmobiousa.com)