



POLYCLONAL ANTIBODY

For research use only. Not for clinical diagnosis.

Catalog No. CZA-025

Anti SOX9

Product type	Primary antibodies
Immunogen	SOX9 (NP_000337.1, 1 a.a. ~ 509 a.a) full-length human protein.
Form	Liquid Protein G purified
Quantity	100ug
Buffer	PBS
Preservative	ProClin (15ppm)
Specificity	Human
Host	Rabbit

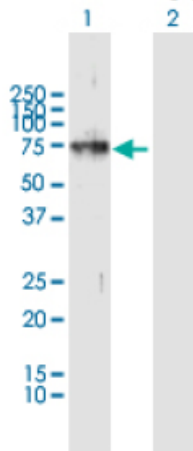
Immunogen Sequence

MNLLDPFMKMTDEQEKGLSGAPSPMTSEDSAGSPCPSGSGSDTENTRPQENTFPKGEPL
KKESEEDKFPVCIREAVSQVLKGYDWTLVPMVVRVNGSSKNKPHVKRPMNAFMVWAQAAR
RKLADQYPHLHNAELSKTLGKLWLLNESEKRPVVEEAERLRVQHKKDHPDYKYQPRRRK
SVKNGQAEAEATEQTHISPNAIFKALQADSPHSSSGMSEVHSPGEHSGQSQGPPTPPTT
PKTDVQPGKADLKREGRPLPEGGRQPPIDFRDVIDIGELSSDVISNIETFDVNEFDQYLPP
NGHPGVPATHGQVYTYTGSYGISSTAATPASAGHVWMSKQQAPPPPPQPPQAPPAPQAPP
QPQAAPPQPPAAPPQPPQAHTLTLSSEPGQSQRTHIKTEQLSPSHYSEQQQHSPQQIAY
SPFNLPHYSPSYPPITRSQYDYTDHQNSSSYSHAAGQGTGLYSTFTYMNPAQRPMYTP
ADTSGVPSIPQTHSPQHWEPVYTQLTRP

Gene Alias CMD1, CMPD1, SRA1

Application notes **WB**
Antibody dilution: 1:1000 ~ 1:2000. Specific band of ~56.10 kDa using SOX9 transfected 293T lysate.

Western Blotting (Transfected lysate)



Western Blot analysis of SOX9 expression in transfected 293T cell line by SOX9 rabbit polyclonal antibody.

Lane 1: SOX9 transfected lysate(56.10 KDa).
Lane 2: Non-transfected lysate.

Storage

For continuous use, store at 2-8°C for one-two days. For extended storage, store in -20°C freezer. Working dilution samples should be discarded if not used within 12 hours.

Production

Cosmo Bio Co., Ltd., Japan

For research use only, Not for diagnostic use.



COSMO BIO Co., LTD.

【JAPAN】
TOYO EKIMAE BLDG. 2-20, TOYO 2-CHOME,
KOTO-KU, TOKYO 135-0016, JAPAN
Phone: +81-3-5632-9610
FAX: +81-3-5632-9619
URL: <https://www.cosmobio.co.jp/>



COSMO BIO USA

【Outside Japan】
2792 Loker Ave West, Suite 101
Carlsbad, CA 92010, USA
email: info@cosmobioussa.com
Phone/FAX: (+1) 760-431-4600
URL: www.cosmobioussa.com