



POLYCLONAL ANTIBODY

For research use only. Not for clinical diagnosis.

Catalog No. CZA-023

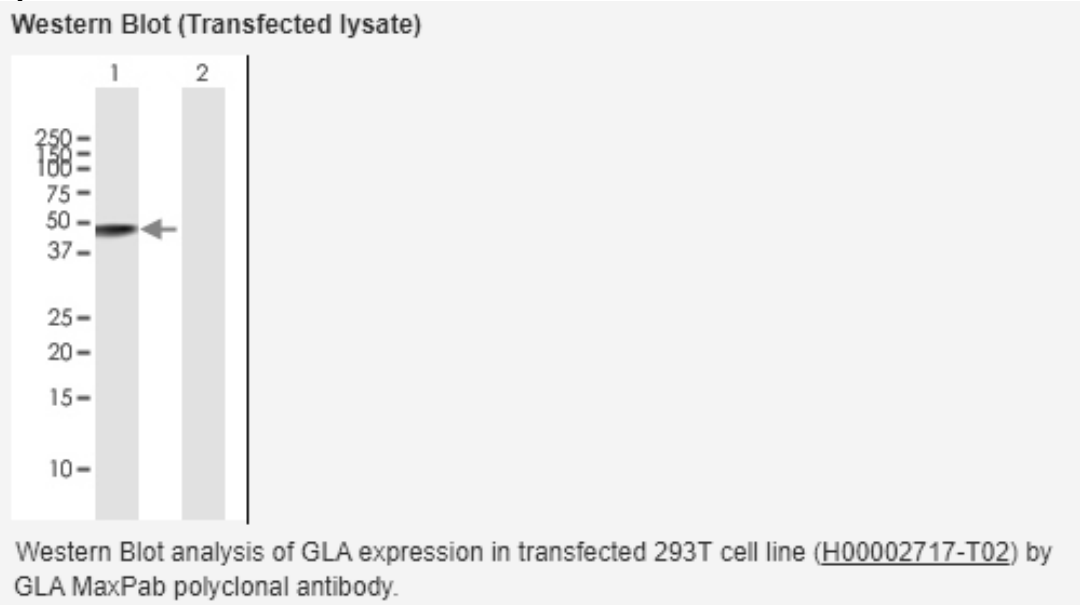
Anti GLA

Product type	Primary antibodies
Immunogen	GLA (NP_000160.1, 1 a.a. ~ 429 a.a) full-length human protein.
Form	Liquid Protein G purified
Quantity	100ug
Buffer	PBS
Preservative	ProClin (15ppm)
Specificity	Human
Host	Rabbit

Immunogen Sequence
MQLRNPELHLGCALALRFLALVSWDIPGARALDNGLARTPTMGWLHWERFMCNLDCQEEPDCIS
EKLFMEMAELMVSEGWKDAGYEYLCIDDCWMAPQRDSEGRLQADPQRFPHGIRQLANYVHSGKL
KLG IYADVGNKTCAGFPGSFGYYDIDAQTFADWGVDLLKFDGCYCDLENLADGYKHMSLALNRT
GRSIVYSCEWPLYMWPFPQKPNYTEIRQYCNHWRNFADIDDSWKSILSDWTSFNQERIVDVAGPG
GWNDPDMVLVIGNFGLSWNQVVTQMALWAIMAAPLFMSNDRHISPQAKALLQDKDVIINQDPLGK
QGYQLRQGDNFVWERPLSGLAWAVAMINRQEIGGPRSYTIAVASLGKGVACNPACFITQLLPVKR
KLG FYEWTSRLRSHINPTGTVLLQLENTMQMSLKDLL

ISG43, UBP43

Application notes **WB**
Antibody dilution: 1:1000 ~ 1:2000. Specific band of ~48.80 kDa using GLA transfected 293T lysate.



Storage For continuous use, store at 2-8°C for one-two days. For extended storage, store in -20°C freezer. Working dilution samples should be discarded if not used within 12 hours.

Production Cosmo Bio Co., Ltd., Japan

For research use only, Not for diagnostic use.



COSMO BIO Co., LTD.

【JAPAN】
TOYO EKIMAE BLDG. 2-20, TOYO 2-CHOME,
KOTO-KU, TOKYO 135-0016, JAPAN
Phone: +81-3-5632-9610
FAX: +81-3-5632-9619
URL: <https://www.cosmobio.co.jp/>



COSMO BIO USA

【Outside Japan】
2792 Loker Ave West, Suite 101
Carlsbad, CA 92010, USA
email: info@cosmobioussa.com
Phone/FAX: (+1) 760-431-4600
URL: www.cosmobioussa.com