



POLYCLONAL ANTIBODY

For research use only. Not for clinical diagnosis.

Catalog No. CZA-022

Anti GLO1

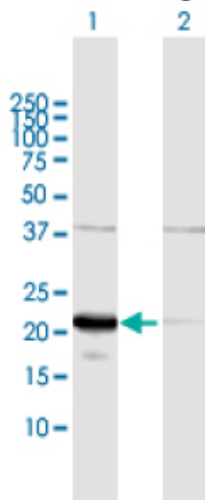
Product type	Primary antibodies
Immunogen	GLO1 (AAH15934.1, 1 a.a. ~ 184 a.a) full-length human protein.
Form	Liquid Protein G purified
Quantity	100ug
Buffer	PBS
Preservative	ProClin (15ppm)
Specificity	Human
Host	Rabbit

Immunogen Sequence
MAEPQPPSGGLTDEAALSCCSDADPSTKDFLLQQTMLRVKDPKKSLEDFYTRVLGMTLIQK
CDFPIMKFSLYFLAYEDKNDIPKEKDEKIAWALSRKATLELTHNWGTEDDATQSYHNGNS
DPRGFHGHIGIAVPDVYSACKRFEELGVKFKVKKPDDGKMKGLAFIQDPDGYWIEILNPNKM
ATLM

GLOD1, GLYI

Application notes
WB
Antibody dilution: 1:1000 ~ 1:2000. Specific band of ~20.70 kDa using GLO1 transfected 293T lysate.

Western Blotting (Transfected lysate)



Western Blot analysis of GLO1 expression in transfected 293T cell line by GLO1 rabbit polyclonal antibody.

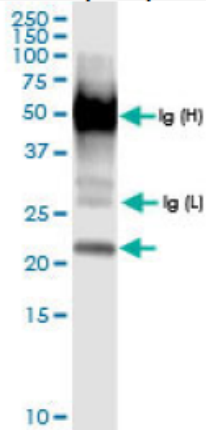
Lane 1: GLO1 transfected lysate(20.70 KDa).

Lane 2: Non-transfected lysate.

IP

Antibody dilution 1:15 ~ 1:60 for immunoprecipitation of GLO1 transfected lysate.

Immunoprecipitation



Immunoprecipitation of GLO1 transfected lysate using GLO1 rabbit polyclonal antibody and Protein A Magnetic Bead, and immunoblotted with GLO1 rabbit polyclonal antibody.

Storage

For continuous use, store at 2-8°C for one-two days. For extended storage, store in -20°C freezer. Working dilution samples should be discarded if not used within 12 hours.

Production

Cosmo Bio Co., Ltd., Japan

For research use only, Not for diagnostic use.



COSMO BIO Co., LTD.

【JAPAN】
TOYO EKIMAE BLDG. 2-20, TOYO 2-CHOME,
KOTO-KU, TOKYO 135-0016, JAPAN
Phone: +81-3-5632-9610
FAX: +81-3-5632-9619
URL: <https://www.cosmobio.co.jp/>



COSMO BIO USA

【Outside Japan】
2792 Loker Ave West, Suite 101
Carlsbad, CA 92010, USA
email: info@cosmobioussa.com
Phone/FAX: (+1) 760-431-4600
URL: www.cosmobioussa.com