



POLYCLONAL ANTIBODY

For research use only. Not for clinical diagnosis.

Catalog No. CZA-021

Anti ZFYVE9

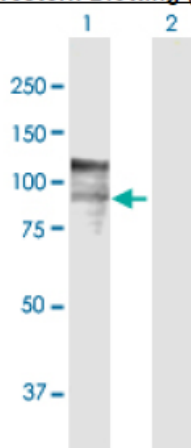
Product type	Primary antibodies
Immunogen	ZFYVE9 (NP_015562.1, 1 a.a. ~ 762 a.a) full-length human protein.
Form	Liquid Protein G purified
Quantity	100ug
Buffer	PBS
Preservative	ProClin (15ppm)
Specificity	Human
Host	Rabbit

Immunogen Sequence
MENYFQAEAYNLDKVLDEFEQNEDETVSSTLLDTKWNKILDPPSHRLSFNPTLASVNESAVSNESQPQLKVFSLAHSAPLTTEEDHCANGQDCNLNPEIATMWIDENAVAEDQLIKRNYSWDDQCSAVEVGEKKCGNLA CLPDEKNVLVAVMHNC DKRTLQNDLQDCNNYNSQSLMDAFSCSLDNENRQTDQFSFSINESTE KDMNSEKQMDPLNRPKTEGRSVNHL CPTSSDSLASVCSPSQLKDDGSIGRDPMSAITS LTVDSVISSQGT DGCPAVKKQENYIPDEDLTGKISSPRTDLGSPNSFSHMSEGILMKKEPAEESTTEESLRSGLP LLLKPDMPNGSGRNDCERCSDCLVPNEVRADENEGYEHEETLGTTEFLNMTEHFSESQDMTNWKLTKLNEMNDSQVNEEKEKFLQISQPEDTNGDSGGQCVGLADAGLDLKGTCISESEECDFSTVIDTPAANYLSNGCDSYGMQDPGVSFVPKTLP SKEDSVTEEKEIEESKSECYSNIYEQRGNEATEGSG LLLNSTGDLMKKNYLHNFC SQVPSVLGQSSPKVVASLPSISV PFGGARPQPSNLKLQIPKPLSDHLQNDFPANSGNNTKNKNDILGKAKLGENSATNVCSPSLGNISNVD TNGEHLESYAEISTRPCLALAPDSPDNDLRAGQFGISARKPFTTLGEVAPVWVPDSQAPNCMKCEARFTFTKRRHHCRACGKVFCA SC CSLKCKLLYMDRKEARVCVICHSVLMNGKY

Gene Alias MADHIP, NSP, SARA, SMADIP

Application notes **WB**
Antibody dilution: 1:1000 ~ 1:2000. Specific band of ~83.70 kDa using ZFYVE9 transfected 293T lysate.

Western Blotting (Transfected lysate)



Western Blot analysis of ZFYVE9 expression in transfected 293T cell line by ZFYVE9 rabbit polyclonal antibody.

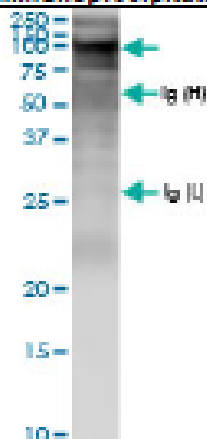
Lane 1: ZFYVE9 transfected lysate(83.70 kDa).

Lane 2: Non-transfected lysate.

IP

Antibody dilution 1:15 ~ 1:60 for immunoprecipitation of ZFYVE9 transfected lysate.

Immunoprecipitation



Immunoprecipitation of ZFYVE9 transfected lysate using ZFYVE9 rabbit polyclonal antibody and Protein A Magnetic Bead, and Immunoblotted with ZFYVE9 rabbit polyclonal antibody.

Storage

For continuous use, store at 2-8°C for one-two days. For extended storage, store in -20°C freezer. Working dilution samples should be discarded if not used within 12 hours.

Production

Cosmo Bio Co., Ltd., Japan

For research use only, Not for diagnostic use.



COSMO BIO CO., LTD.

【JAPAN】
TOYO EKIMAE BLDG. 2-20, TOYO 2-CHOME,
KOTO-KU, TOKYO 135-0016, JAPAN
Phone: +81-3-5632-9610
FAX: +81-3-5632-9619
URL: <https://www.cosmobio.co.jp/>



COSMO BIO USA

【Outside Japan】
2792 Loker Ave West, Suite 101
Carlsbad, CA 92010, USA
email: info@cosmobioussa.com
Phone/FAX: (+1) 760-431-4600
URL: www.cosmobioussa.com