



POLYCLONAL ANTIBODY

For research use only. Not for clinical diagnosis.

Catalog No. CZA-020

Anti WISP2

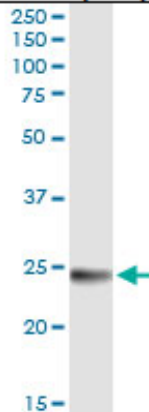
Product type	Primary antibodies
Immunogen	WISP2 (NP_003872.1, 1 a.a. ~ 250 a.a) full-length human protein.
Form	Liquid Protein G purified
Quantity	100ug
Buffer	PBS
Preservative	ProClin (15ppm)
Specificity	Human
Host	Rabbit

Immunogen Sequence
MRGTPKTHLLAFSLCLLSKVRTLQCPTPCTCPWPPPRCPLGVPLVLDGCGCCRVCARRL
GEPCDQLHVCDASQGLVCQPGAGPGGRGALCLLAEDDSSCEVNGRLYREGETFQPHCSIR
CRCEDGGFTCVPLCSEDEVRLPSWDCPHPRRVEVLGKCCPEWVCGQGGGLGTQPLPAQGPQ
FSGLVSSLPPGVPCPEWSTAWGPCSTTCGLMATRVSNQNRFCRLETQRRRLCLSRPCPPS
RGRSPQNSAF

Gene Alias CCN5, CT58, CTGF-L

Application notes **IP**
Antibody dilution 1:15 ~ 1:60 for immunoprecipitation of WISP2 transfected lysate.

Immunoprecipitation



Immunoprecipitation of WISP2 transfected lysate using WISP2 rabbit polyclonal antibody and Protein A Magnetic Bead, and immunoblotted with WISP2 mouse polyclonal antibody.

Storage For continuous use, store at 2-8°C for one-two days. For extended storage, store in -20°C freezer. Working dilution samples should be discarded if not used within 12 hours.

Production Cosmo Bio Co., Ltd., Japan

For research use only, Not for diagnostic use.



COSMO BIO Co., LTD.

【JAPAN】
TOYO EKIMAE BLDG. 2-20, TOYO 2-CHOME,
KOTO-KU, TOKYO 135-0016, JAPAN
Phone: +81-3-5632-9610
FAX: +81-3-5632-9619
URL: <https://www.cosmobio.co.jp/>



COSMO BIO USA

【Outside Japan】
2792 Loker Ave West, Suite 101
Carlsbad, CA 92010, USA
email: info@cosmobioussa.com
Phone/FAX: (+1) 760-431-4600
URL: www.cosmobioussa.com