



**POLYCLONAL ANTIBODY**

*For research use only. Not for clinical diagnosis.*

**Catalog No. CZA-019**

# Anti BCL2L10

**Product type** Primary antibodies

**Immunogen** BCL2L10 (NP\_065129.1, 1 a.a. ~ 204 a.a) full-length human protein.

**Form** Liquid  
Protein G purified

**Quantity** 100ug

**Buffer** PBS

**Preservative** ProClin (15ppm)

**Specificity** Human

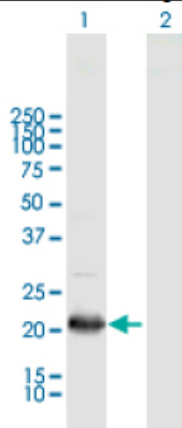
**Host** Rabbit

**Immunogen Sequence**  
MVDQLRERTTMADPLRRETELLADYLGYCAREPGTPEPAPSTPEAAVLRSAARLRQIH  
RSFFSAYLGYPGNRFELVALMADSVLSDSPGPTWGRVVTLVTFAGTLLERGPLVTARWKK  
WGFQPRLKEQEGDVARDCQRLVALLSSRLMGQHRAWLQAQGGWDGFCHFFRTPFPLAFWR  
KQLVQAFLSCLLTAFIYLWTRLL

**Gene Alias** AMAC-1, AMAC1, CKb7, DC-CK1, DCCK1, MIP-4, PARC, SCYA18

**Application notes** **WB**  
Antibody dilution: 1:1000 ~ 1:2000. Specific band of ~23.20 kDa using BCL2L10 transfected 293T lysate.

**Western Blotting (Transfected lysate)**



Western Blot analysis of BCL2L10 expression in transfected 293T cell line by BCL2L10 rabbit polyclonal antibody

Lane 1: BCL2L10 transfected lysate(23.20 KDa).

Lane 2: Non-transfected lysate.

**Storage** For continuous use, store at 2-8°C for one-two days. For extended storage, store in -20°C freezer. Working dilution samples should be discarded if not used within 12 hours.

**Production**

Cosmo Bio Co., Ltd., Japan

For research use only, Not for diagnostic use.



**COSMO BIO Co., LTD.**

**【JAPAN】**  
TOYO EKIMAE BLDG. 2-20, TOYO 2-CHOME,  
KOTO-KU, TOKYO 135-0016, JAPAN  
Phone: +81-3-5632-9610  
FAX: +81-3-5632-9619  
URL: <https://www.cosmobio.co.jp/>



**COSMO BIO USA**

**【Outside Japan】**  
2792 Loker Ave West, Suite 101  
Carlsbad, CA 92010, USA  
email: [info@cosmobioussa.com](mailto:info@cosmobioussa.com)  
Phone/FAX: (+1) 760-431-4600  
URL: [www.cosmobioussa.com](http://www.cosmobioussa.com)