



**POLYCLONAL ANTIBODY**

*For research use only. Not for clinical diagnosis.*

**Catalog No. CZA-017**

# Anti PCCB

<b>Product type</b>	Primary antibodies
<b>Immunogen</b>	PCCB (NP_000523.2, 1 a.a. ~ 539 a.a) full-length human protein.
<b>Form</b>	Liquid Protein G purified
<b>Quantity</b>	100ug
<b>Buffer</b>	PBS
<b>Preservative</b>	ProClin (15ppm)
<b>Specificity</b>	Human
<b>Host</b>	Rabbit

**Immunogen Sequence**

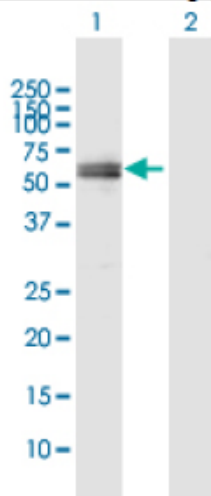
MAAALRVAAVGARLSV LASGLRAAVRSLCSQATSVNERIENKRRTALLGGGQRRIDAQHK  
RGKLTARERISLLLDPGSFVESDMFVEHRCADFGMAADKNKFPGDSVVTGRGRINGRLVY  
VFSQDFTVFGGSLSGAHAQKICKIMDQAITVGAPVIGLNDSSGGARIQEGVESLAGYADIF  
LRNVTASGVIPQISLIMGPCAGGAVYSPALTDFTFMVKDTSYLFITGPDVVKSVTNEDVT  
QEELGGAKTHTTMSGVAHRAFENDVDALCNLRDFFNYLPLSSQDPAPVRECHDPSDRLVP  
ELDTIVPLESTKAYNMVDIHSVVDEREFFEIMPNYAKNIIVGFARMNGRTVGIVGNQPK  
VASGCLDINSSVKGARFVRFCDAFNIPLITFVDVPGFLPGTAQEYGGIIRHGAKLLYAFA  
EATVPKVTVITRKAYGGAYDVMSSKHLCGDTNYAWPTAEIAVMGAKGAVEIIFKGHENVE  
AAQAEYIEKFANPFPAAVRGGFVDDIIQPSSTRARICCDLDVLASKKVQRPWRKHANIPL

**Gene Alias** DKFZp451E113

**Application notes**

**WB**  
Antibody dilution: 1:1000 ~ 1:2000. Specific band of ~58.20 kDa using PCCB transfected 293T lysate.

**Western Blotting (Transfected lysate)**



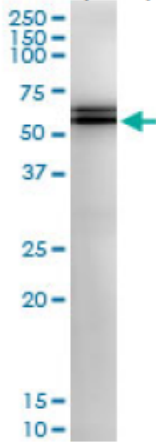
Western Blot analysis of PCCB expression in transfected 293T cell line by PCCB rabbit polyclonal antibody

Lane 1: PCCB transfected lysate(58.20 KDa).  
Lane 2: Non-transfected lysate.

## IP

Antibody dilution 1:15 ~ 1:60 for immunoprecipitation of PCCB transfected lysate.

### Immunoprecipitation



Immunoprecipitation of PCCB transfected lysate using PCCB rabbit polyclonal antibody and Protein A Magnetic Bead, and immunoblotted with PCCB purified mouse polyclonal antibody.

### **Storage**

For continuous use, store at 2-8°C for one-two days. For extended storage, store in -20°C freezer. Working dilution samples should be discarded if not used within 12 hours.

### **Production**

Cosmo Bio Co., Ltd., Japan

For research use only, Not for diagnostic use.



**COSMO BIO Co., LTD.**

**【JAPAN】**  
TOYO EKIMAE BLDG. 2-20, TOYO 2-CHOME,  
KOTO-KU, TOKYO 135-0016, JAPAN  
Phone: +81-3-5632-9610  
FAX: +81-3-5632-9619  
URL: <https://www.cosmobio.co.jp/>



**COSMO BIO USA**

**【Outside Japan】**  
2792 Loker Ave West, Suite 101  
Carlsbad, CA 92010, USA  
email: [info@cosmobioussa.com](mailto:info@cosmobioussa.com)  
Phone/FAX: (+1) 760-431-4600  
URL: [www.cosmobioussa.com](http://www.cosmobioussa.com)