



POLYCLONAL ANTIBODY

For research use only. Not for clinical diagnosis.

Catalog No. CZA-015

Anti PDCD1

Product type	Primary antibodies
Immunogen	PDCD1 (AAH74740.1, 1 a.a. ~ 288 a.a) full-length human protein
Form	Liquid Protein G purified
Quantity	100ug
Buffer	PBS
Preservative	ProClin (15ppm)
Specificity	Human
Host	Rabbit

Immunogen Sequence
MQIPQAPWPVWVAVLQLGWRPGWFLDSPDRPWNPTTFSPALLVVTEGDNATFTCSFSNTS
ESFVLNWYRMSPSNQTDKLAAPEDRSQPGQDCRFRTQLPNGRDFHMSVVRARRNDSGT
YLCGAISLAPKAQIKESLRAELRVTERRAEVPTAHPSPSPRPAGQFQTLVGVVGGLLGS
LVLLVWVLAVICSRAARGTIGARRTGQPLKEDPSAVPVFSVDYGELDFQWREKTPEPPVP
CVPEQTEYATIVFSPGMGTSSPARRGSADGPRSAQPLRPEDGHCSWPL

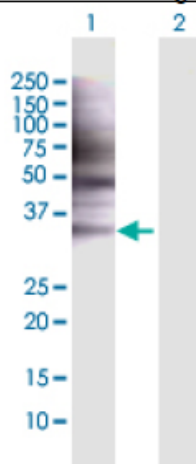
Gene Alias MB20, MGC26312, NPL3

Application notes

WB

Antibody dilution: 1:1000 ~ 1:2000. Specific band of ~31.60 kDa using PDCD1 transfected 293T lysate.

Western Blotting (Transfected lysate)



Western Blot analysis of PDCD1 expression in transfected 293T cell line by PDCD1 rabbit polyclonal antibody.

Lane 1: PDCD1 transfected lysate(31.60 KDa).

Lane 2: Non-transfected lysate.

Storage

For continuous use, store at 2-8°C for one-two days. For extended storage, store in -20°C freezer.

Production

Working dilution samples should be discarded if not used within 12 hours.
Cosmo Bio Co., Ltd., Japan

For research use only, Not for diagnostic use.



COSMO BIO Co., LTD.

【JAPAN】
TOYO EKIMAE BLDG. 2-20, TOYO 2-CHOME,
KOTO-KU, TOKYO 135-0016, JAPAN
Phone: +81-3-5632-9610
FAX: +81-3-5632-9619
URL: <https://www.cosmobio.co.jp/>



COSMO BIO USA

【Outside Japan】
2792 Loker Ave West, Suite 101
Carlsbad, CA 92010, USA
email: info@cosmobioussa.com
Phone/FAX: (+1) 760-431-4600
URL: www.cosmobioussa.com