



POLYCLONAL ANTIBODY

For research use only. Not for clinical diagnosis.

Catalog No. CZA-014

Anti SLC16A

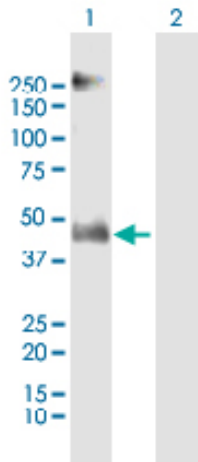
Product type	Primary antibodies
Immunogen	SLC16A1 (P53985, 1 a.a. ~ 500 a.a) full-length human protein.
Form	Liquid Protein G purified
Quantity	100ug
Buffer	PBS
Preservative	ProClin (15ppm)
Specificity	Human
Host	Rabbit

Immunogen Sequence
MPPAVGGPVGYTTPDGGWGWAVVIGAFISIGFSYAFPKSITVFFKEIEGIFHATTSEVSW
ISSIMLAVMYGGGPISSILVNKYGSRIVMIVGGCLSGCLIAASFCNTVQQLYVCIGVIG
GLGLAFNLNPALTMIGKYFYKRRPLANGLAMAGSPVFLCTLAPLNQVFFGIFGWGRGSFLI
LGLLLNCCVAGALMRPIGPKPTKAGKDKSKASLEKAGKSGVKKDLHDANTDLIGRHPKQ
EKRSVFQTINQFLDLTLFTHRGFLLYLSGNVIMFFGLFAPLVFLSSYGKSQHSSEKSAF
LLSILAFVDMVARPSMGLVANTKPIRPRIQYFFAASVVANGVCHMLAPLSTTYVGFVCVYA
GFFGFAGWLSSVLFETLMDLVGPQRFSSAVGLVTIVECCPVLLGPPLLGRINDMYGDYK
YTYWACGVVLIISGIYLFIGMGINYRLLAKEQKANEQKESKEEETSIDVAGKPNEVTKA
AESPDQKDTEGGPKKEESPV

Gene Alias FLJ36745, HHF7, MCT, MCT1, MGC44475

Application notes **WB**
Antibody dilution: 1:1000 ~ 1:2000. Specific band of ~54.00 kDa using SLC16A1 transfected 293T lysate.

Western Blotting (Transfected lysate)



Western Blot analysis of SLC16A1 expression in transfected 293T cell line by SLC16A1 rabbit polyclonal antibody.

Lane 1: SLC16A1 transfected lysate(54.00 KDa).
Lane 2: Non-transfected lysate.

Storage

For continuous use, store at 2-8°C for one-two days. For extended storage, store in -20°C freezer. Working dilution samples should be discarded if not used within 12 hours.

Production

Cosmo Bio Co., Ltd., Japan

For research use only, Not for diagnostic use.



COSMO BIO Co., LTD.

【JAPAN】
TOYO EKIMAE BLDG. 2-20, TOYO 2-CHOME,
KOTO-KU, TOKYO 135-0016, JAPAN
Phone: +81-3-5632-9610
FAX: +81-3-5632-9619
URL: <https://www.cosmobio.co.jp/>



COSMO BIO USA

【Outside Japan】
2792 Loker Ave West, Suite 101
Carlsbad, CA 92010, USA
email: info@cosmobioussa.com
Phone/FAX: (+1) 760-431-4600
URL: www.cosmobioussa.com