



POLYCLONAL ANTIBODY

For research use only. Not for clinical diagnosis.

Catalog No. CZA-012

Anti ITIH1

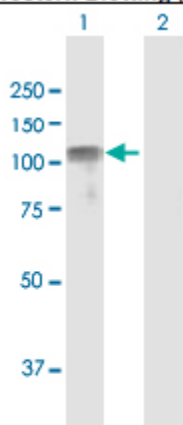
Product type	Primary antibodies
Immunogen	ITIH1 (NP_002206.1, 1 a.a. ~ 911 a.a) full-length human protein.
Form	Liquid Protein A purified
Quantity	100ug
Buffer	PBS
Preservative	ProClin (15ppm)
Specificity	Human
Host	Rabbit

Immunogen Sequence	MDGAMGPRGLLLCMYLVSLILQAMPALGSATGRSKSSEKRVAVDTAVDGVFIRSLKVNC KVTSRFAHYVVTSSQVVNTANEAREVAFDLEIPKTAFIGSDFAVTADGNAFIGDIKDKVTAW KQYRKAASIGENAGLVRASGRTMEQFTIHLTVNPQSKVTFQLTYEEVLKRNHMQYEIVIK VKPKQLVHHFEIDVDIFEPQGISKLDAQASFLPKELAAQTIKKSFSGKKGHVLFRTVSQ QQSCPTCSTSLNGHFVITYDVSQKICDLLVANNHFAHFFAPQNLNMMNKNVVFVIDIS GSMRGQKVKQTKKALLKILGDMQPGDYFDLVLFGRVQSWKGSVQASEANLQAAQDFVR GFSLDEATNLNGLLRGIEILNQVQESLPELSNHASILIMLTDGDPTEGVTDRSQILKNV RNAIRGRFPLYNLGFGHNVDNFLEVMSENNGRAQRIYEDHDATQQQLQGFYSQVAKPLL VDVDLQYPQDAVLALTQNHKKQYYEGSEIVVAGRIADNKQSSFKADVQAHGEGQEFSITC LVDEEEMKKLLRERGHMLENHVERLWAYLTIQELLAKRMKVDREVRANLSSQALRMSLDY GFVTPLTSMIRGMADQDGLKPTIDKPSSESPPLEMLGPRRTFVLSALQPSPTHSSSNTQ RLPDRVTGVDTPHFIHVPQKEDTLCFNINEEPGVILSLVQDPNTGFSVNGQLIGNKAR SPGQHDGTYFGRLGIANPATDFQLEVTPQNITLNPFGGPFVSWRDQAVLRQDGVVVTIN KKRNLVSVDDGGTFEVVLRVWKGSSVHQDFLGFYVLDShRMSARTHGLLGQFFHPIGF EVSDIHPGSDPTKPDATMVVRNRRLTVTRGLQKDYSKDPWHGAEVSCWFIHNNAGLIDG AYTDYIVPDIF
---------------------------	--

Gene Alias H1P, IATIH, ITIH, MGC126415

Application notes **WB**
Antibody dilution: 1:1000 ~ 1:2000. Specific band of ~101.40 kDa using ITIH1 transfected 293T lysate.

Western Blotting (Transfected lysate)



Western Blot analysis of ITIH1 expression in transfected 293T cell line by ITIH1 rabbit polyclonal antibody.

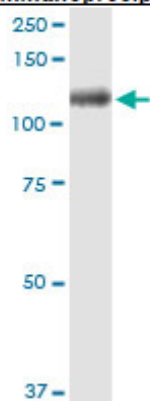
Lane 1: ITIH1 transfected lysate(101.40 KDa).

Lane 2: Non-transfected lysate.

IP

Antibody dilution 1:15 ~ 1:60 for immunoprecipitation of ITIH1 transfected lysate..

Immunoprecipitation



Immunoprecipitation of ITIH1 transfected lysate using ITIH1 rabbit polyclonal antibody and Protein A Magnetic Bead, and immunoblotted with ITIH1 purified mouse polyclonal antibody.

Storage

For continuous use, store at 2-8°C for one-two days. For extended storage, store in -20°C freezer. Working dilution samples should be discarded if not used within 12 hours.

Production

Cosmo Bio Co., Ltd., Japan

For research use only, Not for diagnostic use.



COSMO BIO CO., LTD.

【JAPAN】
TOYO EKIMAE BLDG. 2-20, TOYO 2-CHOME,
KOTO-KU, TOKYO 135-0016, JAPAN
Phone: +81-3-5632-9610
FAX: +81-3-5632-9619
URL: <https://www.cosmobio.co.jp/>



COSMO BIO USA

【Outside Japan】
2792 Loker Ave West, Suite 101
Carlsbad, CA 92010, USA
email: info@cosmobioussa.com
Phone/FAX: (+1) 760-431-4600
URL: www.cosmobioussa.com