



POLYCLONAL ANTIBODY

For research use only. Not for clinical diagnosis.

Catalog No. CZA-011

Anti DHX58

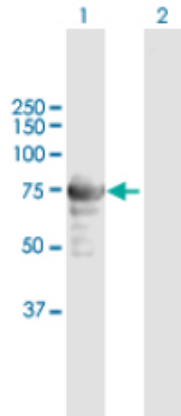
Product type	Primary antibodies
Immunogen	DHX58 (AAH14949.1, 1 a.a. ~ 678 a.a) full-length human protein.
Form	Liquid Protein G purified
Quantity	100ug
Buffer	PBS
Preservative	ProClin (15ppm)
Specificity	Human
Host	Rabbit

Immunogen Sequence
MELRSYQWEVIMPALEGKNIIIWLPTGAGKTRAAAYVAKRHLETVDGAKVVVLVNRVHLV
TQHGEFRRMLDGRWTVTTLSGDMGPRAGFGHLARCHDLLICTAELLQMALTSPEEEHV
ELTVFSLIVVDECHHTHKDTVYNVIMSQYLELKLQRAQLPQVLGLTASPGTGGASKLDG
AINHVLQLCANLDTWCIMSPQNCCPQLQEHSQQPCKQYNLCHRRSQDPFGDLLKKLMDQI
HDHLEMPELSRKFGTQMYEQVVKLSEAAALAGLQEQRVYALHLRRYNDALLIHDTVRAV
DALAALQDFYHREHVTKTQILCAERRLLALFDDRKNELAHLATHGPENPKLEMLEKILQR
QFSSNSPRGIIFTRTRQSAHSLLLWLQQQGLQTVDIRAQLLIGAGNSSQSTHMTQRDQ
QEVQKQFQDGTLLNLLVATSVAEEGLDIPHCNVVRYGLLTNEISMVQARGRARADQSVYA
FVATEGSRELKRELINEALETLMQAVAAVQKMDQAEYQAKIRDQQAALTKRAAQAQR
ENQRQQFPVEHVQLLCINCMVAVGHGSDLRKVEGTHHVNVNPNFSNYYNVSRDPVVINKV
FKDWKPGGVISCRNCGEVWGLQMIYKSVKLPVLKVRSMLETPQGRIQAKKWSRVPFVSP
DFDFLQHCAENLSDLSLD

Gene Alias D11LGP2, D11lgp2e, LGP2

Application notes **WB**
Antibody dilution: 1:1000 ~ 1:2000. Specific band of ~76.60 kDa using DHX58 transfected 293T lysate.
..

Western Blotting (Transfected lysate)



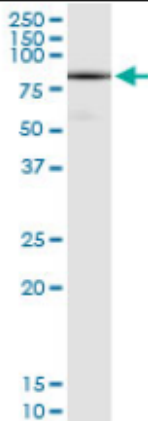
Western Blot analysis of DHX58 expression in transfected 293T cell line by DHX58 rabbit polyclonal antibody.

Lane 1: DHX58 transfected lysate(76.60 kDa).
Lane 2: Non-transfected lysate.

IP

Antibody dilution 1:15 ~ 1:60 for immunoprecipitation of DHX58 transfected lysate.

Immunoprecipitation



Immunoprecipitation of DHX58 transfected lysate using DHX58 rabbit polyclonal antibody and Protein A Magnetic Bead, and immunoblotted with DHX58 purified mouse polyclonal antibody.

Storage

For continuous use, store at 2-8°C for one-two days. For extended storage, store in -20°C freezer. Working dilution samples should be discarded if not used within 12 hours.

Production

Cosmo Bio Co., Ltd., Japan

For research use only, Not for diagnostic use.



COSMO BIO Co., LTD.

[JAPAN]
TOYO EKIMAE BLDG. 2-20, TOYO 2-CHOME,
KOTO-KU, TOKYO 135-0016, JAPAN
Phone: +81-3-5632-9610
FAX: +81-3-5632-9619
URL: <https://www.cosmobio.co.jp/>



COSMO BIO USA

[Outside Japan]
2792 Loker Ave West, Suite 101
Carlsbad, CA 92010, USA
email: info@cosmobioussa.com
Phone/FAX: (+1) 760-431-4600
URL: www.cosmobioussa.com